

## Product datasheet

# Anti-HPV16 E6 + HPV18 E6 antibody [C1P5] ab70

★★★★☆ 2 Abreviews 36 References 2 Images

### Overview

|                            |  |
|----------------------------|--|
| <b>Product name</b>        | Anti-HPV16 E6 + HPV18 E6 antibody [C1P5]   |
| <b>Description</b>         | Mouse monoclonal [C1P5] to HPV16 E6 + HPV18 E6   |
| <b>Host species</b>        | Mouse  |
| <b>Tested applications</b> | <b>Suitable for:</b> WB, IP, IHC-P   |
| <b>Species reactivity</b>  | <b>Reacts with:</b> Human papillomavirus   |
| <b>Immunogen</b>           | Fusion protein corresponding to Human papillomavirus HPV16 E6 + HPV18 E6. HPV-18 E6-beta galactosidase fusion protein  |
| <b>Positive control</b>    | Human cervical cancer cells.   |
| <b>General notes</b>       | <p>Clinical relevance: Detection of HPV in cervical smears and biopsies. Uses: Analysis of E6 expression in cell transformation studies.</p> <p>The E6 proteins are known to form oligomers; PMID19917295, PMID17209544.</p> <p>The Life Science industry has been in the grips of a reproducibility crisis for a number of years. Abcam is leading the way in addressing this with our range of recombinant monoclonal antibodies and knockout edited cell lines for gold-standard validation. Please check that this product meets your needs before purchasing.</p> <p>If you have any questions, special requirements or concerns, please send us an inquiry and/or contact our Support team ahead of purchase. Recommended alternatives for this product can be found below, along with publications, customer reviews and Q&amp;As</p> |

### Properties

|                             |  |
|-----------------------------|--|
| <b>Form</b>                 | Liquid   |
| <b>Storage instructions</b> | Shipped at 4°C. Store at +4°C short term (1-2 weeks). Upon delivery aliquot. Store at -20°C or -80°C. Avoid freeze / thaw cycle. |
| <b>Purity</b>               | Protein A purified   |
| <b>Clonality</b>            | Monoclonal   |
| <b>Clone number</b>         | C1P5   |
| <b>Myeloma</b>              | NS1  |
| <b>Isotype</b>              | IgG1   |
| <b>Light chain type</b>     | unknown  |

## Applications

---

**The Abpromise guarantee** Our [Abpromise guarantee](#) covers the use of ab70 in the following tested applications.

The application notes include recommended starting dilutions; optimal dilutions/concentrations should be determined by the end user.

| Application | Abreviews | Notes   |
|-------------|-----------|---|
| WB          |           | Use at an assay dependent concentration. Detects a band of approximately 16.5 kDa.<br>16.5 kDa band is HPV-18, 17 kDa band is HPV-16.<br>The E6 proteins are known to form oligomers; PMID19917295, PMID17209544. |
| IP          |           | Use at an assay dependent concentration.  |
| IHC-P       | ★★★★★ (1) | Use at an assay dependent concentration.  |

## Target

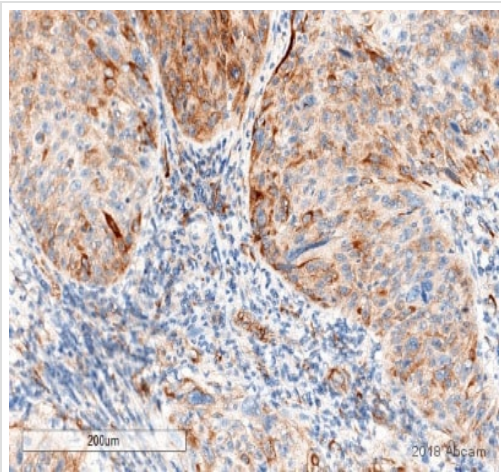
---

### Relevance

Human Papilloma virus (HPV) is responsible for the development of type and tissue specific papilloma in the oral cavity and in the larynx. In the skin papilloma virus can cause different types of warts and in the ano-genital region it is associated with condyloma or carcinoma. HPV types 1,6 and 11 usually are associated with benign transformations of the tissues, while e.g. HPV types 16, 18 and 31 seem to be responsible for the development of some carcinoma like cervical carcinoma. The role of HPV in non-melanoic tumours of the skin is under discussion. Protein E6 is a Transcriptional transactivator, binding double stranded DNA. It has transforming activity inactivating, with E6-AP ubiquitin-protein ligase, the human TP53/p53 tumor suppressor protein by targeting it for degradation.

## Images

---



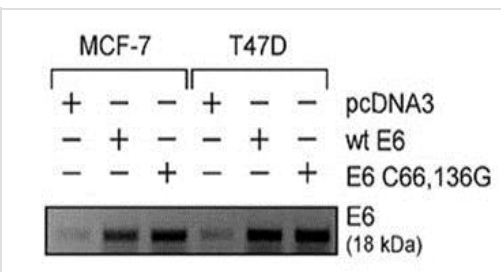
Immunohistochemistry (Formalin/PFA-fixed paraffin-embedded sections) - Anti-HPV16 E6 + HPV18 E6 antibody [C1P5] (ab70)

Image courtesy of Mr Allan Wang

Formalin-fixed, paraffin-embedded human uterine cervix squamous cell carcinoma tissue stained for HPV16 E6 + HPV18 E6 using ab70 at 1/200 dilution in immunohistochemical analysis.

Incubated with primary antibody for 1 hour at 25°C.

Heat mediated antigen retrieval at pH 6.



Western blot - Anti-HPV16 E6 + HPV18 E6 antibody [C1P5] (ab70)

Image from Zhang Y et al, J Biol Chem. 2005 Sep 30;280(39):33165-77. Epub 2005 Jun 27, Fig 9. DOI 10.1074/jbc.M505124200

Subconfluent proliferating MCF-7 or T47D cells were transiently transfected overnight with empty pcDNA3 vector, with FLAG wild-type E6 or zinc finger defective mutant E6 (E6-(C66,136G)). The cells were washed, post-incubated for 24 hours to allow gene expression, and harvested for Western blotting to detect the E6 oncoprotein using ab70.

**Please note:** All products are "FOR RESEARCH USE ONLY. NOT FOR USE IN DIAGNOSTIC PROCEDURES"

### Our Abpromise to you: Quality guaranteed and expert technical support

- Replacement or refund for products not performing as stated on the datasheet
- Valid for 12 months from date of delivery
- Response to your inquiry within 24 hours
- We provide support in Chinese, English, French, German, Japanese and Spanish
- Extensive multi-media technical resources to help you
- We investigate all quality concerns to ensure our products perform to the highest standards

If the product does not perform as described on this datasheet, we will offer a refund or replacement. For full details of the Abpromise, please visit <https://www.abcam.com/abpromise> or contact our technical team.

### Terms and conditions

- Guarantee only valid for products bought direct from Abcam or one of our authorized distributors