

Product datasheet

Anti-HPV16 L1 antibody [HPV16/2058R] - BSA and Azide free ab236310

Recombinant

2 Images

Overview

Product name	Anti-HPV16 L1 antibody [HPV16/2058R] - BSA and Azide free
Description	Rabbit monoclonal [HPV16/2058R] to HPV16 L1 - BSA and Azide free
Host species	Rabbit
Tested applications	Suitable for: IHC-P
Species reactivity	Reacts with: Human papillomavirus
Immunogen	Full length protein corresponding to Human papillomavirus HPV16 L1. (Native protein). Database link: P03101
Positive control	IHC-P: Human cervix tissue.

Properties

Form	Liquid
Storage instructions	Shipped at 4°C. Store at +4°C short term (1-2 weeks). Upon delivery aliquot. Store at -20°C long term. Avoid freeze / thaw cycle.
Storage buffer	pH: 7.2 Constituent: PBS
Carrier free	Yes
Purity	Protein A/G purified
Purification notes	Purified from bioreactor concentrate by Protein A/G.
Clonality	Monoclonal
Clone number	HPV16/2058R
Isotype	IgG

Applications

The Abpromise guarantee Our [Abpromise guarantee](#) covers the use of ab236310 in the following tested applications. The application notes include recommended starting dilutions; optimal dilutions/concentrations should be determined by the end user.

Application	Abreviews	Notes
IHC-P		Use a concentration of 0.5 - 1 µg/ml. Perform heat mediated antigen retrieval with citrate buffer pH 6 before commencing with IHC staining protocol. Incubate with primary antibody for 30 minutes at room temperature.

Target

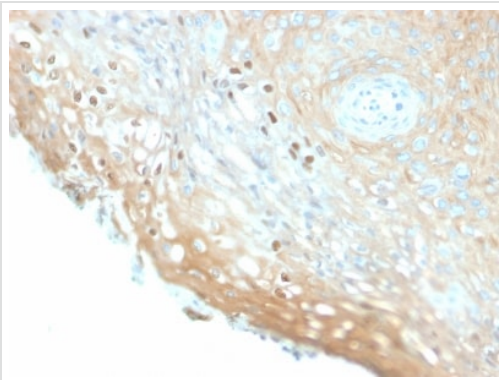
Relevance

L1 is a major capsid protein of type 16 human papilloma virus. Infection with specific types of HPV has been associated with an increased risk of developing cervical neoplasia. HPV types 6 and 11 have been associated with relatively benign diseases such as genital warts but types 16 and 18 are strongly associated with cervical, vaginal, and vulvar malignancies.

Cellular localization

Virion. Host Nucleus.

Images



Formalin-fixed, paraffin-embedded human cervix tissue stained for HPV16 L1 using [ab234305](#) at 1 µg/ml in immunohistochemical analysis.

This data was developed using the same antibody clone in a different buffer formulation containing PBS, BSA and sodium azide ([ab234305](#)).

Immunohistochemistry (Formalin/PFA-fixed paraffin-embedded sections) - Anti-HPV16 L1 antibody [HPV16/2058R] - BSA and Azide free ([ab236310](#))

Why choose a recombinant antibody?



Research with confidence
Consistent and reproducible results



Long-term and scalable supply
Recombinant technology



Success from the first experiment
Confirmed specificity



Ethical standards compliant
Animal-free production

Anti-HPV16 L1 antibody [HPV16/2058R] - BSA and Azide free (ab236310)

Please note: All products are "FOR RESEARCH USE ONLY. NOT FOR USE IN DIAGNOSTIC PROCEDURES"

Our Abpromise to you: Quality guaranteed and expert technical support

- Replacement or refund for products not performing as stated on the datasheet
- Valid for 12 months from date of delivery
- Response to your inquiry within 24 hours
- We provide support in Chinese, English, French, German, Japanese and Spanish
- Extensive multi-media technical resources to help you
- We investigate all quality concerns to ensure our products perform to the highest standards

If the product does not perform as described on this datasheet, we will offer a refund or replacement. For full details of the Abpromise, please visit <https://www.abcam.com/abpromise> or contact our technical team.

Terms and conditions

- Guarantee only valid for products bought direct from Abcam or one of our authorized distributors