

Product datasheet

Anti-HPV16 L1 antibody [rHPV16L1/1058] ab234309

Recombinant

[2 Images](#)

Overview

| | |
|----------------------------|--|
| Product name | Anti-HPV16 L1 antibody [rHPV16L1/1058] |
| Description | Mouse monoclonal [rHPV16L1/1058] to HPV16 L1 |
| Host species | Mouse |
| Tested applications | Suitable for: IHC-P |
| Species reactivity | Reacts with: Human papillomavirus |
| Immunogen | Full length protein corresponding to Human papillomavirus HPV16 L1. (Native protein). Database link: P03101 |
| Positive control | IHC-P: Human cervix tissue. |

Properties

| | |
|-----------------------------|---|
| Form | Liquid |
| Storage instructions | Shipped at 4°C. Store at +4°C short term (1-2 weeks). Upon delivery aliquot. Store at -20°C. Avoid freeze / thaw cycle. |
| Storage buffer | pH: 7.2 Preservative: 0.05% Sodium azide Constituents: PBS, 0.05% BSA |
| Purity | Protein A/G purified |
| Purification notes | Purified from Bioreactor Concentrate by Protein A/G. |
| Clonality | Monoclonal |
| Clone number | rHPV16L1/1058 |
| Isotype | IgG1 |

Applications

The Abpromise guarantee Our [Abpromise guarantee](#) covers the use of ab234309 in the following tested applications. The application notes include recommended starting dilutions; optimal dilutions/concentrations should be determined by the end user.

| Application | Abreviews | Notes |
|-------------|-----------|---|
| IHC-P | | Use a concentration of 0.5 - 1 µg/ml. Perform heat mediated antigen retrieval with citrate buffer pH 6 before commencing with IHC staining protocol. Primary incubation for 30 minutes at room temperature |

Target

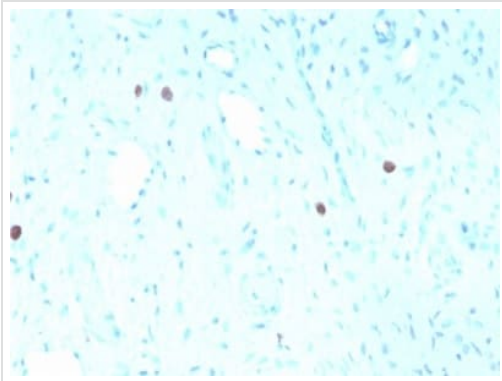
Relevance

L1 is a major capsid protein of type 16 human papilloma virus. Infection with specific types of HPV has been associated with an increased risk of developing cervical neoplasia. HPV types 6 and 11 have been associated with relatively benign diseases such as genital warts but types 16 and 18 are strongly associated with cervical, vaginal, and vulvar malignancies.

Cellular localization

Virion. Host Nucleus.

Images



Formalin-fixed, paraffin-embedded human cervix tissue stained for HPV16 L1 using ab234309 at 1 µg/ml in immunohistochemical analysis.

Immunohistochemistry (Formalin/PFA-fixed paraffin-embedded sections) - Anti-HPV16 L1 antibody [rHPV16L1/1058] (ab234309)

Why choose a recombinant antibody?



Research with confidence
Consistent and reproducible results



Long-term and scalable supply
Recombinant technology



Success from the first experiment
Confirmed specificity



Ethical standards compliant
Animal-free production

Anti-HPV16 L1 antibody [rHPV16L1/1058]
(ab234309)

Please note: All products are "FOR RESEARCH USE ONLY. NOT FOR USE IN DIAGNOSTIC PROCEDURES"

Our Abpromise to you: Quality guaranteed and expert technical support

- Replacement or refund for products not performing as stated on the datasheet
- Valid for 12 months from date of delivery
- Response to your inquiry within 24 hours
- We provide support in Chinese, English, French, German, Japanese and Spanish
- Extensive multi-media technical resources to help you
- We investigate all quality concerns to ensure our products perform to the highest standards

If the product does not perform as described on this datasheet, we will offer a refund or replacement. For full details of the Abpromise, please visit <https://www.abcam.com/abpromise> or contact our technical team.

Terms and conditions

- Guarantee only valid for products bought direct from Abcam or one of our authorized distributors