

Product datasheet

Anti-HPV18 E2 antibody [2E7] ab100969

1 References 2 Images

Overview

<b>Product name</b>	Anti-HPV18 E2 antibody [2E7]
<b>Description</b>	Mouse monoclonal [2E7] to HPV18 E2
<b>Host species</b>	Mouse
<b>Specificity</b>	Reacts in WB, and ELISA with HPV18 native E2 protein as well recombinant E2 protein expressed in bacteria and Cos 7 cells.
<b>Tested applications</b>	<b>Suitable for:</b> WB, ELISA, ICC/IF <b>Unsuitable for:</b> IP
<b>Species reactivity</b>	<b>Reacts with:</b> Human papillomavirus
<b>Immunogen</b>	Recombinant full length protein corresponding to HPV18 E2.
<b>Epitope</b>	Mapped to amino acids 1-83.

Properties

<b>Form</b>	Liquid
<b>Storage instructions</b>	Shipped at 4°C. Upon delivery aliquot and store at -20°C or -80°C. Avoid repeated freeze / thaw cycles.
<b>Storage buffer</b>	Preservative: 0.1% Sodium Azide Constituents: PBS, pH 7.4
<b>Purity</b>	Protein G purified
<b>Purification notes</b>	Purified from bacteria by affinity chromatography.
<b>Clonality</b>	Monoclonal
<b>Clone number</b>	2E7
<b>Isotype</b>	IgG

Applications

Our [Abpromise guarantee](#) covers the use of **ab100969** in the following tested applications.

The application notes include recommended starting dilutions; optimal dilutions/concentrations should be determined by the end user.

Application	Abreviews	Notes
WB		Use a concentration of 0.1 µg/ml. Predicted molecular weight: 41 kDa.
ELISA		Use a concentration of 0.1 µg/ml.
ICC/IF		Use at an assay dependent concentration.
<b>Application notes</b>		Is unsuitable for IP.

## Target

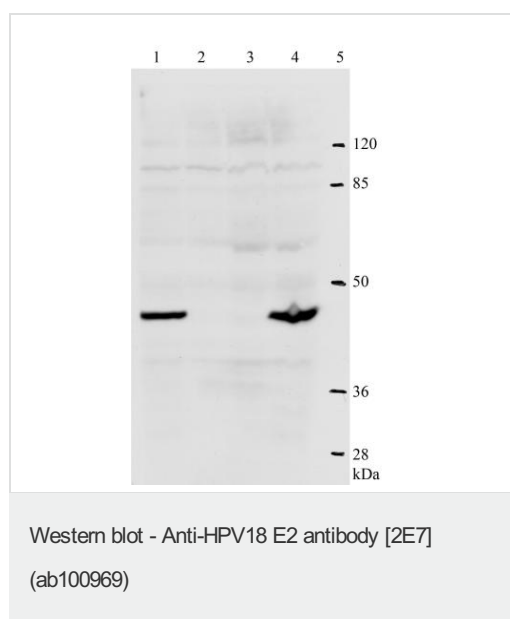
### Relevance

Human papillomaviruses (HPV) are small DNA viruses which infect epithelia of the skin and mucosa. Over 90 types have been identified and they mostly cause a variety of benign lesions such as warts and verrucae. However, some subtypes, notably types 16 and 18, 31 and 33, have been confirmed as agents which cause cervical cancer. Human Papillomavirus (HPV) E2 proteins are the major viral regulators of transcription and replication during the viral life cycle.

### Cellular localization

Host nucleus

## Images



**All lanes :** Anti-HPV18 E2 antibody [2E7] (ab100969) at 1/100 dilution

**Lane 1 :** lysates of U20S cells transfected with plasmid expressing HPV11 E2 protein

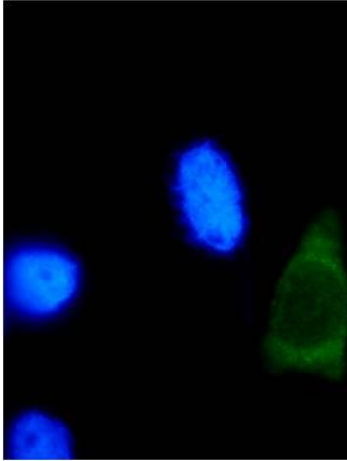
**Lane 2 :** lysates of plain U20S cells

**Lane 3 :** lysates of plain HeLa cells

**Lane 4 :** lysates of U20S transfected with plasmid expressing HPV11 E2 protein

**Lane 5 :** marker

**Predicted band size:** 41 kDa



Immunofluorescence (IF) analysis of HPV18 E2 protein in U2OS cells. All the nuclei were stained by DAPI. Green color represents nucleus localized HPV18 E2 detected by ab100969.

Immunocytochemistry/ Immunofluorescence - Anti-HPV18 E2 antibody [2E7] (ab100969)

**Please note:** All products are "FOR RESEARCH USE ONLY AND ARE NOT INTENDED FOR DIAGNOSTIC OR THERAPEUTIC USE"

### Our Abpromise to you: Quality guaranteed and expert technical support

---

- Replacement or refund for products not performing as stated on the datasheet
- Valid for 12 months from date of delivery
- Response to your inquiry within 24 hours
- We provide support in Chinese, English, French, German, Japanese and Spanish
- Extensive multi-media technical resources to help you
- We investigate all quality concerns to ensure our products perform to the highest standards

If the product does not perform as described on this datasheet, we will offer a refund or replacement. For full details of the Abpromise, please visit <https://www.abcam.com/abpromise> or contact our technical team.

### Terms and conditions

---

- Guarantee only valid for products bought direct from Abcam or one of our authorized distributors