


Product datasheet

HRP Anti-alpha smooth muscle Actin (acetyl E3) + ACTG2 (acetyl E3) antibody [E184] ab196920

Recombinant RabMAb

3 Images

Overview

Product name	HRP Anti-alpha smooth muscle Actin (acetyl E3) + ACTG2 (acetyl E3) antibody [E184]
Description	HRP Rabbit monoclonal [E184] to alpha smooth muscle Actin (acetyl E3) + ACTG2 (acetyl E3)
Host species	Rabbit
Conjugation	HRP
Specificity	The antibody has been shown to detect P62736-ACTA (gene <i>ACTA2</i>): (Ac)-EEEDSTALVC and P63267-ACTH (gene <i>ACTG2</i>): (Ac)-EEETTALVC in indirect ELISA.
Tested applications	Suitable for: WB, IHC-P
Species reactivity	Reacts with: Human Predicted to work with: Mouse, Rat 
Immunogen	Synthetic peptide corresponding to Human alpha smooth muscle Actin (N terminal).
Positive control	WB: A431 whole cell lysate. IHC-P: normal human kidney tissue.
General notes	Our RabMAb [®] technology is a patented hybridoma-based technology for making rabbit monoclonal antibodies. For details on our patents, please refer to RabMAb[®] patents .

Properties

Form	Liquid
Storage instructions	Shipped at 4°C. Store at +4°C short term (1-2 weeks). Upon delivery aliquot. Store at -20°C. Avoid freeze / thaw cycle. Store In the Dark.
Storage buffer	pH: 7.40 Preservative: 0.1% Proclin 300 Solution Constituents: 30% Glycerol (glycerin, glycerine), 1% BSA, PBS
Purity	Protein A purified
Clonality	Monoclonal
Clone number	E184
Isotype	IgG

Applications

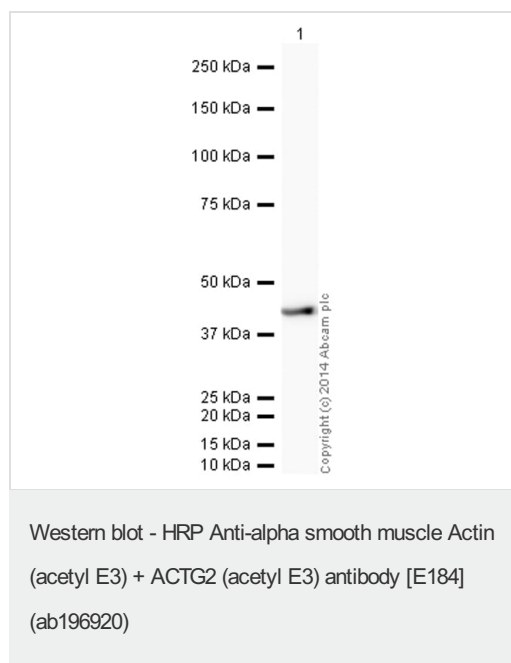
The Abpromise guarantee Our [Abpromise guarantee](#) covers the use of ab196920 in the following tested applications. The application notes include recommended starting dilutions; optimal dilutions/concentrations should be determined by the end user.

Application	Abreviews	Notes
WB		1/5000. Detects a band of approximately 42 kDa (predicted molecular weight: 42 kDa).
IHC-P		1/100. Perform heat mediated antigen retrieval with citrate buffer pH 6 before commencing with IHC staining protocol.

Target

Cellular localization alpha smooth muscle Actin: Cytoplasm > cytoskeleton. ACTG2: Cytoplasm > cytoskeleton.

Images



HRP Anti-alpha smooth muscle Actin (acetyl E3) + ACTG2 (acetyl E3) antibody [E184] (ab196920) at 1/5000 dilution + A431 (Human epithelial carcinoma cell line) Whole Cell Lysate at 10 µg

Developed using the ECL technique.

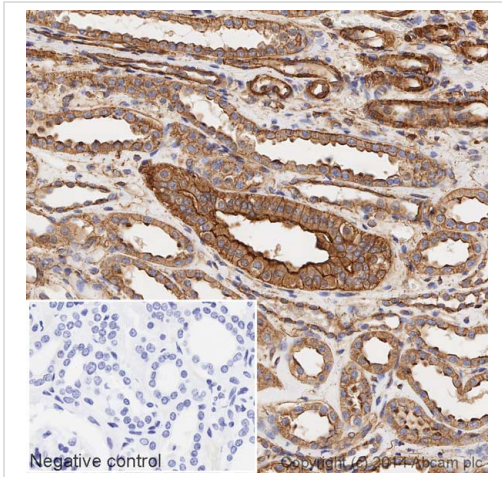
Performed under reducing conditions.

Predicted band size: 42 kDa

Observed band size: 42 kDa

Exposure time: 2 seconds

This blot was produced using a 4-12% Bis-tris gel under the MOPS buffer system. The gel was run at 200V for 50 minutes before being transferred onto a Nitrocellulose membrane at 30V for 70 minutes. The membrane was then blocked for an hour using 2% Bovine Serum Albumin before being incubated with ab196920 overnight at 4°C. Antibody binding was visualised using ECL development solution [ab133406](#).







Immunohistochemistry (Formalin/PFA-fixed paraffin-embedded sections) - HRP Anti-alpha smooth muscle Actin (acetyl E3) + ACTG2 (acetyl E3) antibody [E184] (ab196920)

IHC image of alpha smooth muscle Actin staining in a section of formalin-fixed paraffin-embedded normal human kidney tissue*, performed on a Leica BOND. The section was pre-treated using heat mediated antigen retrieval with sodium citrate buffer (pH6, epitope retrieval solution 1) for 20mins. The section was then incubated with ab196920 at 1/100 dilution, for 15 mins at room temperature. DAB was used as the chromogen. The section was then counterstained with haematoxylin and mounted with DPX. The inset negative control image is taken from an identical assay without primary antibody.

For other IHC staining systems (automated and non-automated) customers should optimize variable parameters such as antigen retrieval conditions, primary antibody concentration and antibody incubation times.

*Tissue obtained from the Human Research Tissue Bank, supported by the NIHR Cambridge Biomedical Research Centre

Why choose a recombinant antibody?

 <p>Research with confidence Consistent and reproducible results</p>	 <p>Long-term and scalable supply Recombinant technology</p>
 <p>Success from the first experiment Confirmed specificity</p>	 <p>Ethical standards compliant Animal-free production</p>

HRP Anti-alpha smooth muscle Actin (acetyl E3) + ACTG2 (acetyl E3) antibody [E184] (ab196920)

Please note: All products are "FOR RESEARCH USE ONLY. NOT FOR USE IN DIAGNOSTIC PROCEDURES"

Our Abpromise to you: Quality guaranteed and expert technical support

- Replacement or refund for products not performing as stated on the datasheet
- Valid for 12 months from date of delivery
- Response to your inquiry within 24 hours
- We provide support in Chinese, English, French, German, Japanese and Spanish

- Extensive multi-media technical resources to help you
- We investigate all quality concerns to ensure our products perform to the highest standards

If the product does not perform as described on this datasheet, we will offer a refund or replacement. For full details of the Abpromise, please visit <https://www.abcam.com/abpromise> or contact our technical team.

Terms and conditions

- Guarantee only valid for products bought direct from Abcam or one of our authorized distributors