

Product datasheet

HRP Anti-MLKL (phospho S345) antibody [EPR9515(2)]  
ab208430

Recombinant RabMAb

3 Images

Overview

<b>Product name</b>	HRP Anti-MLKL (phospho S345) antibody [EPR9515(2)]
<b>Description</b>	HRP Rabbit monoclonal [EPR9515(2)] to MLKL (phospho S345)
<b>Host species</b>	Rabbit
<b>Conjugation</b>	HRP
<b>Specificity</b>	MLKL pS345 is a trigger for necroptosis. It is only detectable in infection/cellular damaged (PMID:29229989) or aging tissue (PMID: 28807105) but not in normal tissues.
<b>Tested applications</b>	<b>Suitable for:</b> Dot blot, WB
<b>Species reactivity</b>	<b>Reacts with:</b> Mouse
<b>Immunogen</b>	Synthetic peptide. This information is proprietary to Abcam and/or its suppliers.
<b>Positive control</b>	L-929 cells.
<b>General notes</b>	<p>This antibody was developed through collaboration with the lab of Xiaodong Wang at the National Institute of Biological Sciences, Beijing.</p> <p>This product is a recombinant monoclonal antibody, which offers several advantages including:</p> <ul style="list-style-type: none"> <li>- High batch-to-batch consistency and reproducibility</li> <li>- Improved sensitivity and specificity</li> <li>- Long-term security of supply</li> <li>- Animal-free production</li> </ul> <p>For more information <a href="#">see here</a>.</p> <p>Our RabMAb<sup>®</sup> technology is a patented hybridoma-based technology for making rabbit monoclonal antibodies. For details on our patents, please refer to <a href="#">RabMAb<sup>®</sup> patents</a>.</p>

Properties

<b>Form</b>	Liquid
<b>Storage instructions</b>	Shipped at 4°C. Store at +4°C short term (1-2 weeks). Upon delivery aliquot. Store at -20°C. Avoid freeze / thaw cycle. Store In the Dark.
<b>Storage buffer</b>	pH: 7.40 Preservative: 0.1% Proclin 300 Solution

	Constituents: PBS, 1% BSA, 30% Glycerol (glycerin, glycerine)
<b>Purity</b>	Protein A purified
<b>Clonality</b>	Monoclonal
<b>Clone number</b>	EPR9515(2)
<b>Isotype</b>	IgG

## Applications

**The Abpromise guarantee** Our [Abpromise guarantee](#) covers the use of ab208430 in the following tested applications. The application notes include recommended starting dilutions; optimal dilutions/concentrations should be determined by the end user.

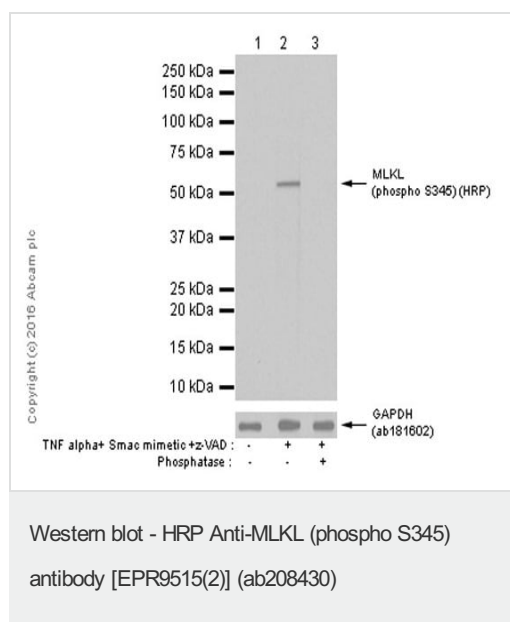
Application	Abreviews	Notes
<b>Dot blot</b>		1/1000.
<b>WB</b>		1/4500. Predicted molecular weight: 54 kDa.

## Target

**Sequence similarities** Belongs to the protein kinase superfamily. Contains 1 protein kinase domain.

**Domain** The protein kinase domain is predicted to be catalytically inactive.

## Images



**All lanes** : HRP Anti-MLKL (phospho S345) antibody [EPR9515(2)] (ab208430) at 1/4500 dilution

**Lane 1** : Untreated L-929 (Mouse connective tissue fibroblast cell line) whole cell lysates

**Lane 2** : L-929 (Mouse connective tissue fibroblast cell line) treated with 20 ng/ml TNF alpha, 100nM Smac mimetic, and 20mM z-VAD for 8 hours whole cell lysates

**Lane 3** : L-929 (Mouse connective tissue fibroblast cell line) treated with 20 ng/ml TNF alpha, 100nM Smac mimetic, and 20mM z-VAD for 8 hours whole cell lysates. Then the membrane was incubated with Alkaline phosphatase.

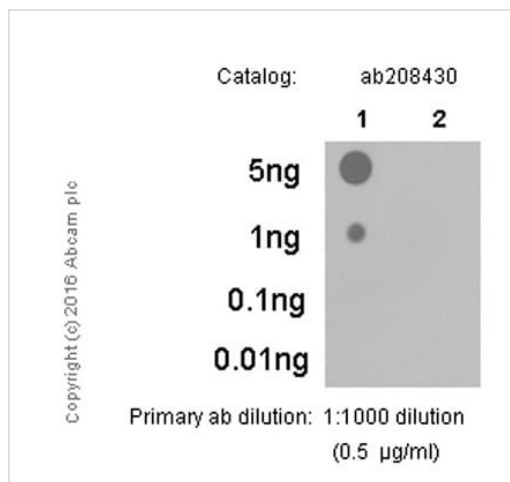
Lysates/proteins at 15 µg per lane.

**Predicted band size:** 54 kDa

**Observed band size:** 54 kDa

**Exposure time:** 1 minute

Blocking and diluting buffer: 5% NFD/MTBST.



Dot Blot - HRP Anti-MLKL (phospho S345) antibody  
[EPR9515(2)] (ab208430)

Dot Blot analysis of

**Lane 1:** MLKL (phospho S345) phospho peptide and

**Lane 2:** MLKL Non-phospho peptide labeling MLKL (phospho S345)

with ab208430 at 1/1000 dilution. 5% NFD/MTBST was used as the diluting and blocking buffer. Exposure time: 3 minutes.

Why choose a recombinant antibody?

- Research with confidence**  
Consistent and reproducible results
- Long-term and scalable supply**  
Recombinant technology
- Success from the first experiment**  
Confirmed specificity
- Ethical standards compliant**  
Animal-free production

HRP Anti-MLKL (phospho S345) antibody  
[EPR9515(2)] (ab208430)

**Please note:** All products are "FOR RESEARCH USE ONLY. NOT FOR USE IN DIAGNOSTIC PROCEDURES"

### Our Abpromise to you: Quality guaranteed and expert technical support

- Replacement or refund for products not performing as stated on the datasheet
- Valid for 12 months from date of delivery
- Response to your inquiry within 24 hours

- We provide support in Chinese, English, French, German, Japanese and Spanish
- Extensive multi-media technical resources to help you
- We investigate all quality concerns to ensure our products perform to the highest standards

If the product does not perform as described on this datasheet, we will offer a refund or replacement. For full details of the Abpromise, please visit <https://www.abcam.com/abpromise> or contact our technical team.

### **Terms and conditions**

---

- Guarantee only valid for products bought direct from Abcam or one of our authorized distributors