

## Product datasheet

# HRP Anti-RFP antibody ab34767

★★★★☆ 3 Abreviews 7 References 1 Image

### Overview

---

<b>Product name</b>	HRP Anti-RFP antibody
<b>Description</b>	HRP Rabbit polyclonal to RFP
<b>Host species</b>	Rabbit
<b>Conjugation</b>	HRP
<b>Specificity</b>	ab34767 is designed to detect RFP and its variants.
<b>Tested applications</b>	<b>Suitable for:</b> WB
<b>Species reactivity</b>	<b>Reacts with:</b> Human
<b>Immunogen</b>	Fusion protein The immunogen is a Red Fluorescent Protein (RFP) fusion protein corresponding to the full length amino acid sequence (234aa) derived from the mushroom polyp coral Discosoma.

### General notes

The Life Science industry has been in the grips of a reproducibility crisis for a number of years. Abcam is leading the way in addressing this with our range of recombinant monoclonal antibodies and knockout edited cell lines for gold-standard validation. Please check that this product meets your needs before purchasing.

If you have any questions, special requirements or concerns, please send us an inquiry and/or contact our Support team ahead of purchase. Recommended alternatives for this product can be found below, along with publications, customer reviews and Q&As

### Properties

---

<b>Form</b>	Liquid
<b>Storage instructions</b>	Shipped at 4°C. Store at +4°C.
<b>Storage buffer</b>	Preservative: 0.01% Gentamicin sulphate Constituents: 1% BSA, 0.42% Potassium phosphate, 0.87% Sodium chloride
<b>Purity</b>	Immunogen affinity purified
<b>Purification notes</b>	immunoaffinity chromatography was followed by solid phase adsorption to remove any unwanted reactivities.
<b>Clonality</b>	Polyclonal
<b>Isotype</b>	IgG

## Applications

**The Abpromise guarantee** Our [Abpromise guarantee](#) covers the use of ab34767 in the following tested applications. The application notes include recommended starting dilutions; optimal dilutions/concentrations should be determined by the end user.

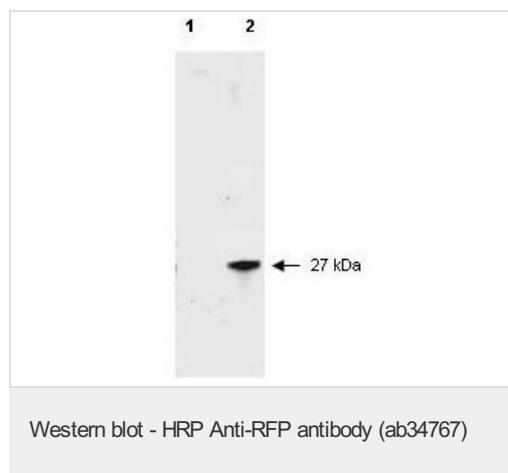
Application	Abreviews	Notes
WB	★★★★★ (2)	1/1000 - 1/5000. Detects a band of approximately 27 kDa.

## Target

### Relevance

Fluorescent proteins have become a useful and ubiquitous tool for making chimeric proteins, where they function as a fluorescent protein tag. Typically they tolerate N- and C-terminal fusion to a broad variety of proteins. They have been expressed in most known cell types and are used as a noninvasive fluorescent marker in living cells and organisms. They enable a wide range of applications where they have functioned as a cell lineage tracer, reporter of gene expression, or as a measure of protein-protein interactions.

## Images



**All lanes** : HRP Anti-RFP antibody (ab34767) at 1/2500 dilution

**Lane 1** : HeLa cell extract

**Lane 2** : HeLa lysate

Lysates/proteins at 10 µg per lane.

### Secondary

**All lanes** : Goat-a-Rabbit IgG [H&L] at 1/5000 dilution

**Please note:** All products are "FOR RESEARCH USE ONLY. NOT FOR USE IN DIAGNOSTIC PROCEDURES"

## Our Abpromise to you: Quality guaranteed and expert technical support

- Replacement or refund for products not performing as stated on the datasheet
- Valid for 12 months from date of delivery
- Response to your inquiry within 24 hours
- We provide support in Chinese, English, French, German, Japanese and Spanish
- Extensive multi-media technical resources to help you
- We investigate all quality concerns to ensure our products perform to the highest standards

If the product does not perform as described on this datasheet, we will offer a refund or replacement. For full details of the Abpromise, please visit <https://www.abcam.com/abpromise> or contact our technical team.

## Terms and conditions

---

- Guarantee only valid for products bought direct from Abcam or one of our authorized distributors