

Product datasheet

Anti-Hsp22/HSPB8 antibody ab96837

★★★★★ 1 Abreviews 3 References 4 Images

Overview

Product name	Anti-Hsp22/HSPB8 antibody
Description	Rabbit polyclonal to Hsp22/HSPB8
Host species	Rabbit
Tested applications	Suitable for: IHC-P, WB, ICC/IF
Species reactivity	Reacts with: Human
Immunogen	Synthetic peptide within Human Hsp22/HSPB8 aa 134-196. The exact sequence is proprietary. Database link: Q9UJY1
Positive control	WB: HEK-293T, A431 cell lysate. ICC/IF: HeLa cells. IHC-P: Human lung SCC. This antibody gave a positive result in IHC in the following FFPE tissue: Human normal skeletal muscle.
General notes	This product was previously labelled as Hsp22

Reproducibility is key to advancing scientific discovery and accelerating scientists' next breakthrough.

Abcam is leading the way with our range of recombinant antibodies, knockout-validated antibodies and knockout cell lines, all of which support improved reproducibility.

We are also planning to innovate the way in which we present recommended applications and species on our product datasheets, so that only applications & species that have been tested in our own labs, our suppliers or by selected trusted collaborators are covered by our Abpromise™ guarantee.

In preparation for this, we have started to update the applications & species that this product is Abpromise guaranteed for.

We are also updating the applications & species that this product has been “predicted to work with,” however this information is not covered by our Abpromise guarantee.

Applications & species from publications and Abreviews that have not been tested in our own labs or in those of our suppliers are not covered by the Abpromise guarantee.

Please check that this product meets your needs before purchasing. If you have any questions, special requirements or concerns, please send us an inquiry and/or contact our Support team ahead of purchase. Recommended alternatives for this product can be found below, as well as customer reviews and Q&As.

Properties

Properties

Form	Liquid
Storage instructions	Shipped at 4°C. Store at +4°C short term (1-2 weeks). Upon delivery aliquot. Store at -20°C or -80°C. Avoid freeze / thaw cycle.
Storage buffer	pH: 7.00 Preservative: 0.01% Thimerosal (merthiolate) Constituents: 1.21% Tris, 0.75% Glycine, 10% Glycerol (glycerin, glycerine)
Purity	Immunogen affinity purified
Clonality	Polyclonal
Isotype	IgG

Applications

Our [Abpromise guarantee](#) covers the use of **ab96837** in the following tested applications.

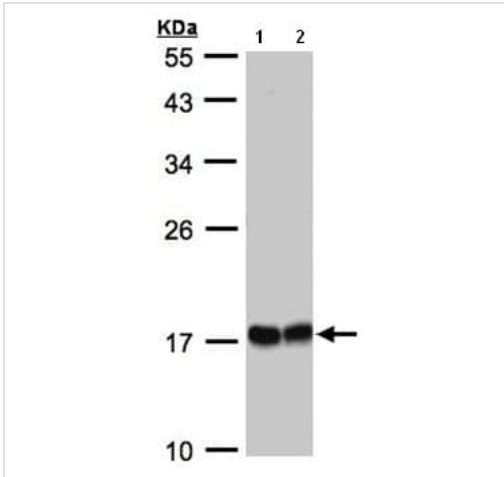
The application notes include recommended starting dilutions; optimal dilutions/concentrations should be determined by the end user.

Application	Abreviews	Notes
IHC-P		Use at an assay dependent concentration.
WB		1/500 - 1/3000. Predicted molecular weight: 22 kDa.
ICC/IF		1/100 - 1/1000.

Target

Function	Displays temperature-dependent chaperone activity.
Tissue specificity	Predominantly expressed in skeletal muscle and heart.
Involvement in disease	Neuropathy, distal hereditary motor, 2A Charcot-Marie-Tooth disease 2L
Sequence similarities	Belongs to the small heat shock protein (HSP20) family.
Cellular localization	Cytoplasm. Nucleus. Translocates to nuclear foci during heat shock.

Images



Western blot - Anti-Hsp22/HSPB8 antibody (ab96837)

All lanes : Anti-Hsp22/HSPB8 antibody (ab96837) at 1/1000 dilution

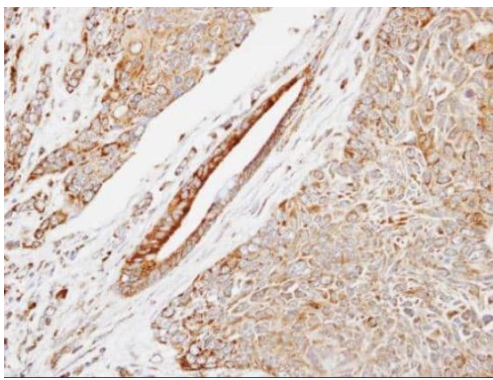
Lane 1 : HEK-293T whole cell lysate

Lane 2 : A431 whole cell lysate

Lysates/proteins at 30 µg per lane.

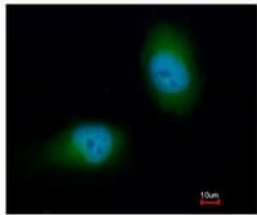
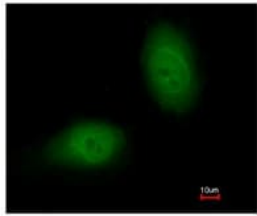
Predicted band size: 22 kDa

12% SDS PAGE



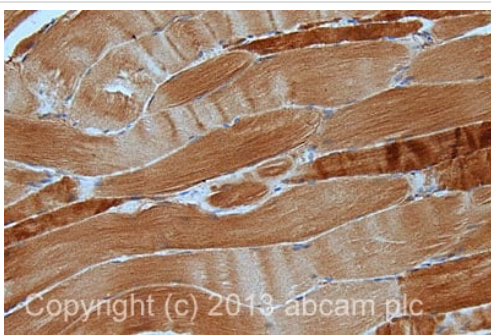
Immunohistochemistry (Formalin/PFA-fixed paraffin-embedded sections) - Anti-Hsp22/HSPB8 antibody (ab96837)

Paraffin embedded human lung SCC tissue stained for HSP22 using ab96837 at 1/500 dilution in immunohistochemical analysis.



Immunocytochemistry/ Immunofluorescence - Anti-Hsp22/HSPB8 antibody (ab96837)

Immunofluorescence analysis of Hsp22/HSPB8 expression in PFA-fixed HeLa cells, using ab96837 at 1/200 dilution. Lower image was merged with DNA probe.



Immunohistochemistry (Formalin/PFA-fixed paraffin-embedded sections) - Anti-Hsp22/HSPB8 antibody (ab96837)

IHC image of Hsp22/HSPB8 staining in Human normal skeletal muscle formalin fixed paraffin embedded tissue section, performed on a Leica Bond™ system using the standard protocol F. The section was pre-treated using heat mediated antigen retrieval with sodium citrate buffer (pH6, epitope retrieval solution 1) for 20 mins. The section was then incubated with ab96837, 5µg/ml, for 15 mins at room temperature and detected using an HRP conjugated compact polymer system. DAB was used as the chromogen. The section was then counterstained with haematoxylin and mounted with DPX.

For other IHC staining systems (automated and non-automated) customers should optimize variable parameters such as antigen retrieval conditions, primary antibody concentration and antibody incubation times.

Please note: All products are "FOR RESEARCH USE ONLY. NOT FOR USE IN DIAGNOSTIC PROCEDURES"

Our Abpromise to you: Quality guaranteed and expert technical support

- Replacement or refund for products not performing as stated on the datasheet

- Valid for 12 months from date of delivery
- Response to your inquiry within 24 hours

- We provide support in Chinese, English, French, German, Japanese and Spanish
- Extensive multi-media technical resources to help you
- We investigate all quality concerns to ensure our products perform to the highest standards

If the product does not perform as described on this datasheet, we will offer a refund or replacement. For full details of the Abpromise, please visit <https://www.abcam.com/abpromise> or contact our technical team.

Terms and conditions

- Guarantee only valid for products bought direct from Abcam or one of our authorized distributors