


## Product datasheet

# Anti-Hsp60 antibody ab31115

★★★★★ 1 Abreviews 6 References 3 Images

### Overview

---

<b>Product name</b>	Anti-Hsp60 antibody
<b>Description</b>	Rabbit polyclonal to Hsp60
<b>Host species</b>	Rabbit
<b>Tested applications</b>	<b>Suitable for:</b> WB, IHC-P
<b>Species reactivity</b>	<b>Reacts with:</b> Cow, Human <b>Predicted to work with:</b> Mouse, Rat, Chicken, Pufferfish, Zebrafish, Sea urchin, Chinese hamster 

**Immunogen** Synthetic peptide within Human Hsp60 aa 1-100. The exact sequence is proprietary.  
Database link: [P10809](#)

**Positive control** HeLa cells, NIH3T3 cells, Colon carcinoma.

**General notes** **This product is FOR RESEARCH USE ONLY. For commercial use, please contact [partnerships@abcam.com](mailto:partnerships@abcam.com).**

Reproducibility is key to advancing scientific discovery and accelerating scientists' next breakthrough.

Abcam is leading the way with our range of recombinant antibodies, knockout-validated antibodies and knockout cell lines, all of which support improved reproducibility.

We are also planning to innovate the way in which we present recommended applications and species on our product datasheets, so that only applications & species that have been tested in our own labs, our suppliers or by selected trusted collaborators are covered by our Abpromise™ guarantee.

In preparation for this, we have started to update the applications & species that this product is Abpromise guaranteed for.

We are also updating the applications & species that this product has been "predicted to work with," however this information is not covered by our Abpromise guarantee.

Applications & species from publications and Abreviews that have not been tested in our own labs or in those of our suppliers are not covered by the Abpromise guarantee.

Please check that this product meets your needs before purchasing. If you have any questions, special requirements or concerns, please send us an inquiry and/or contact our Support team ahead of purchase. Recommended alternatives for this product can be found below, as well as customer reviews and Q&As.

## Properties

---

<b>Form</b>	Liquid
<b>Storage instructions</b>	Shipped at 4°C. Upon delivery aliquot and store at -20°C. Avoid freeze / thaw cycles.
<b>Storage buffer</b>	pH: 7.60 Preservative: 0.1% Sodium azide Constituents: PBS, 1% BSA
<b>Purity</b>	Immunogen affinity purified
<b>Clonality</b>	Polyclonal
<b>Isotype</b>	IgG

## Applications

---

Our [Abpromise guarantee](#) covers the use of **ab31115** in the following tested applications.

The application notes include recommended starting dilutions; optimal dilutions/concentrations should be determined by the end user.

Application	Abreviews	Notes
WB	★★★★★	Use at an assay dependent concentration. Predicted molecular weight: 60 kDa.
IHC-P		1/200.

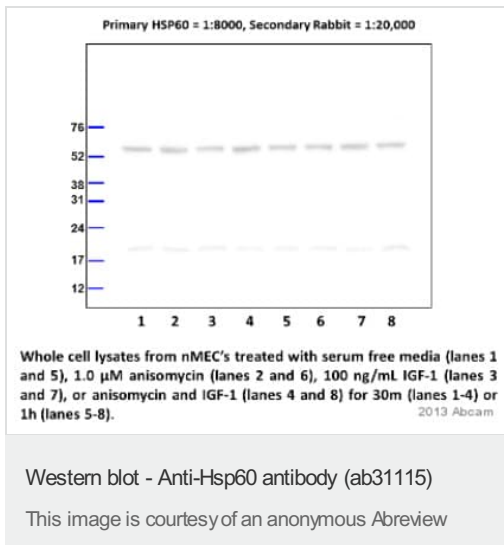
## Target

---

<b>Function</b>	Implicated in mitochondrial protein import and macromolecular assembly. May facilitate the correct folding of imported proteins. May also prevent misfolding and promote the refolding and proper assembly of unfolded polypeptides generated under stress conditions in the mitochondrial matrix.
<b>Involvement in disease</b>	Defects in HSPD1 are a cause of spastic paraplegia autosomal dominant type 13 (SPG13) [MIM:605280]. Spastic paraplegia is a degenerative spinal cord disorder characterized by a slow, gradual, progressive weakness and spasticity of the lower limbs. Defects in HSPD1 are the cause of leukodystrophy hypomyelinating type 4 (HLD4) [MIM:612233]; also called mitochondrial HSP60 chaperonopathy or MitCHAP-60 disease. HLD4 is a severe autosomal recessive hypomyelinating leukodystrophy. Clinically characterized by infantile-onset rotary nystagmus, progressive spastic paraplegia, neurologic regression, motor impairment, profound mental retardation. Death usually occurs within the first two decades of life.
<b>Sequence similarities</b>	Belongs to the chaperonin (HSP60) family.
<b>Cellular localization</b>	Mitochondrion matrix.

## Images

---



**All lanes** : Anti-Hsp60 antibody (ab31115) at 1/8000 dilution

**Lanes 1 & 5** : Cow normal mammary epithelial cells (nMEC) treated with serum free media

**Lanes 2 & 6** : Cow normal mammary epithelial cells (nMEC) treated with 1.0 $\mu$ M anisomycin

**Lanes 3 & 7** : Cow normal mammary epithelial cells (nMEC) treated with 100ng/ml IGF-1

**Lanes 4 & 8** : Cow normal mammary epithelial cells (nMEC) treated with anisomycin and IGF-1

Lysates/proteins at 40  $\mu$ g per lane.

### Secondary

**All lanes** : ECL Anti-Rabbit IgG, Horseradish Peroxidase Linked at 1/20000 dilution

Developed using the ECL technique.

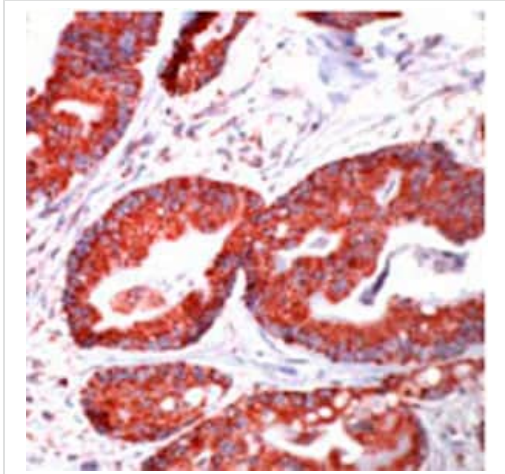
Performed under reducing conditions.

**Predicted band size:** 60 kDa

**Observed band size:** 60 kDa

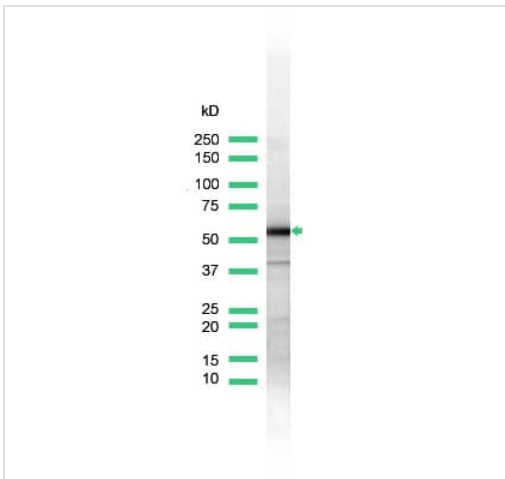
**Exposure time:** 15 seconds

Treatment for 30 minutes (lanes 1-4) or 1 hour (lanes 5-8). 12.5% SDS-PAGE. Proteins collected in RIPA Buffer and transferred to PVDF (0.45  $\mu$ m).



Ab31115, at a 1/200 dilution, staining Hsp60 in formalin fixed, paraffin embedded human colon carcinoma tissue by Immunohistochemistry.

Immunohistochemistry (Formalin/PFA-fixed paraffin-embedded sections) - Anti-Hsp60 antibody (ab31115)



Anti-Hsp60 antibody (ab31115) at 1/25 dilution + lysate prepared from HeLa cells

**Predicted band size: 60 kDa**

Western blot - Anti-Hsp60 antibody (ab31115)

**Please note:** All products are "FOR RESEARCH USE ONLY. NOT FOR USE IN DIAGNOSTIC PROCEDURES"

**Our Abpromise to you: Quality guaranteed and expert technical support**

- Replacement or refund for products not performing as stated on the datasheet

- Valid for 12 months from date of delivery
- Response to your inquiry within 24 hours
  
- We provide support in Chinese, English, French, German, Japanese and Spanish
- Extensive multi-media technical resources to help you
- We investigate all quality concerns to ensure our products perform to the highest standards

If the product does not perform as described on this datasheet, we will offer a refund or replacement. For full details of the Abpromise, please visit <https://www.abcam.com/abpromise> or contact our technical team.

### **Terms and conditions**

---

- Guarantee only valid for products bought direct from Abcam or one of our authorized distributors