

Product datasheet

Anti-Hsp60 antibody ab68416

[1 References](#) [3 Images](#)

Overview

Product name	Anti-Hsp60 antibody
Description	Rabbit polyclonal to Hsp60
Host species	Rabbit
Tested applications	Suitable for: WB, IHC-P, ICC
Species reactivity	Reacts with: Mouse, Rat, Human
Immunogen	A synthetic peptide mapping at the middle region of human Hsp60, identical to the related rat and mouse sequence.

General notes

Reproducibility is key to advancing scientific discovery and accelerating scientists' next breakthrough.

Abcam is leading the way with our range of recombinant antibodies, knockout-validated antibodies and knockout cell lines, all of which support improved reproducibility.

We are also planning to innovate the way in which we present recommended applications and species on our product datasheets, so that only applications & species that have been tested in our own labs, our suppliers or by selected trusted collaborators are covered by our Abpromise™ guarantee.

In preparation for this, we have started to update the applications & species that this product is Abpromise guaranteed for.

We are also updating the applications & species that this product has been "predicted to work with," however this information is not covered by our Abpromise guarantee.

Applications & species from publications and Abreviews that have not been tested in our own labs or in those of our suppliers are not covered by the Abpromise guarantee.

Please check that this product meets your needs before purchasing. If you have any questions, special requirements or concerns, please send us an inquiry and/or contact our Support team ahead of purchase. Recommended alternatives for this product can be found below, as well as customer reviews and Q&As.

Properties

Form	Liquid
Storage instructions	Shipped at 4°C. Upon delivery aliquot and store at -20°C or -80°C. Avoid repeated freeze / thaw cycles.

Storage buffer	Preservatives: 0.025% Thimerosal (merthiolate), 0.025% Sodium azide Constituents: 2.5% BSA, 0.45% Sodium chloride, 0.1% Dibasic monohydrogen sodium phosphate
Purity	Immunogen affinity purified
Clonality	Polyclonal
Isotype	IgG

Applications

Our [Abpromise guarantee](#) covers the use of **ab68416** in the following tested applications.

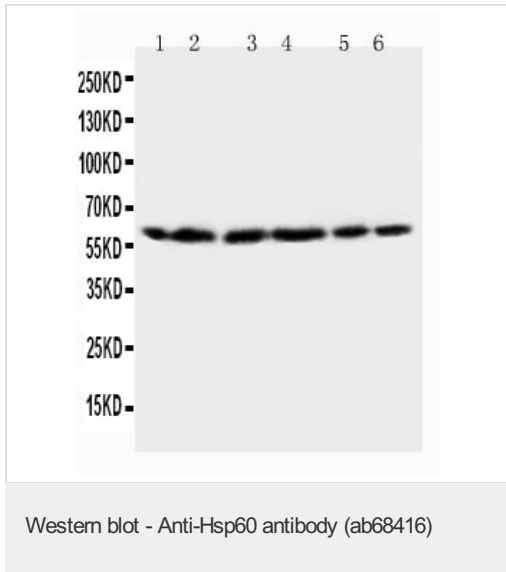
The application notes include recommended starting dilutions; optimal dilutions/concentrations should be determined by the end user.

Application	Abreviews	Notes
WB		Use a concentration of 0.5 - 1 µg/ml. Predicted molecular weight: 60 kDa.
IHC-P		Use a concentration of 0.5 - 1 µg/ml.
ICC		Use a concentration of 0.5 - 1 µg/ml.

Target

Function	Implicated in mitochondrial protein import and macromolecular assembly. May facilitate the correct folding of imported proteins. May also prevent misfolding and promote the refolding and proper assembly of unfolded polypeptides generated under stress conditions in the mitochondrial matrix.
Involvement in disease	Defects in HSPD1 are a cause of spastic paraplegia autosomal dominant type 13 (SPG13) [MIM:605280]. Spastic paraplegia is a degenerative spinal cord disorder characterized by a slow, gradual, progressive weakness and spasticity of the lower limbs. Defects in HSPD1 are the cause of leukodystrophy hypomyelinating type 4 (HLD4) [MIM:612233]; also called mitochondrial HSP60 chaperonopathy or MitCHAP-60 disease. HLD4 is a severe autosomal recessive hypomyelinating leukodystrophy. Clinically characterized by infantile-onset rotary nystagmus, progressive spastic paraplegia, neurologic regression, motor impairment, profound mental retardation. Death usually occurs within the first two decades of life.
Sequence similarities	Belongs to the chaperonin (HSP60) family.
Cellular localization	Mitochondrion matrix.

Images



All lanes : Anti-Hsp60 antibody (ab68416) at 0.5 µg/ml

Lane 1 : Rat brain tissue lysate

Lane 2 : Rat liver tissue lysate

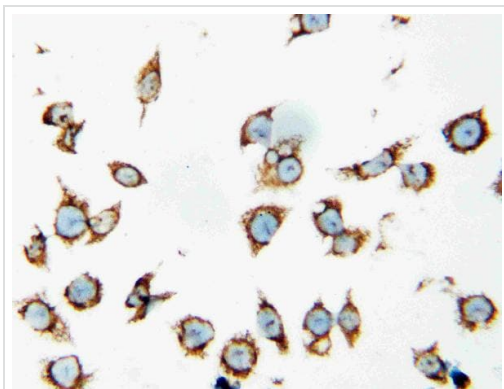
Lane 3 : CEM cell lysate

Lane 4 : HeLa cell lysate

Lane 5 : SMMC cell lysate

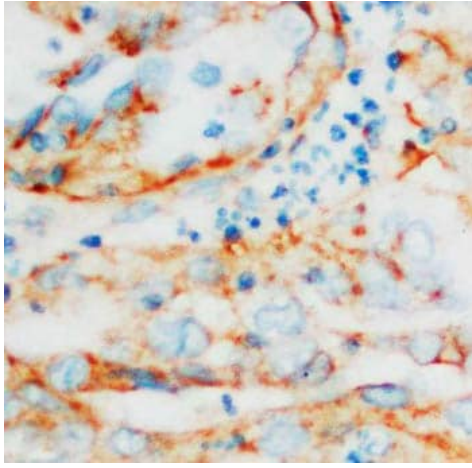
Lane 6 : COLO320 cell lysate

Predicted band size: 60 kDa



Immunocytochemistry of SMMC cells using ab68416 at 1 µg/ml

Immunocytochemistry - Anti-Hsp60 antibody (ab68416)



Immunohistochemistry (Formalin/PFA-fixed paraffin-embedded sections) - Anti-Hsp60 antibody (ab68416)

ab68416 at 1 μ g/ml staining Hsp60 in Human mammary cancer tissue sections by Immunohistochemistry (Formalin/ PFA fixed paraffin-embedded tissue sections). The tissue sections underwent antigen retrieval by boiling. A Biotin-conjugated Goat anti-rabbit IgG was used as secondary at 1/200 dilution.

Please note: All products are "FOR RESEARCH USE ONLY. NOT FOR USE IN DIAGNOSTIC PROCEDURES"

Our Abpromise to you: Quality guaranteed and expert technical support

- Replacement or refund for products not performing as stated on the datasheet
- Valid for 12 months from date of delivery
- Response to your inquiry within 24 hours
- We provide support in Chinese, English, French, German, Japanese and Spanish
- Extensive multi-media technical resources to help you
- We investigate all quality concerns to ensure our products perform to the highest standards

If the product does not perform as described on this datasheet, we will offer a refund or replacement. For full details of the Abpromise, please visit <https://www.abcam.com/abpromise> or contact our technical team.

Terms and conditions

- Guarantee only valid for products bought direct from Abcam or one of our authorized distributors