




## Product datasheet

# Anti-Hsp90 beta antibody ab236282

4 Images

### Overview

<b>Product name</b>	Anti-Hsp90 beta antibody
<b>Description</b>	Rabbit polyclonal to Hsp90 beta
<b>Host species</b>	Rabbit
<b>Tested applications</b>	<b>Suitable for:</b> WB, ICC/IF, IHC-P
<b>Species reactivity</b>	<p><b>Reacts with:</b> Mouse, Rat, Human, Zebrafish</p> <p><b>Predicted to work with:</b> Rabbit, Horse, Chicken, Cow, Cynomolgus monkey, Orangutan </p>
<b>Immunogen</b>	<p>Recombinant fragment corresponding to Human Hsp90 beta aa 150-355.</p> <p>Sequence:</p> <pre> NDDEQYAWESSAGGSFTVRADHGEPiGRGTKVILHLKED QTEYLEERRVK EVVKKHSQFIGYPITLYLEKEREKEISDDEAEEEEKGEKEEE DKDDEEKPK IEDVGSDEEDDSGKDKKKKTKKIKEYIDQEELNKTPIWT RNPDDITQE EYGEFYKSLTNDWEDHLAVKHFSVEGQLEFRALLFIPRRA PFDLFENKKK KNNIKL           </pre> <p>Database link: <a href="#">P08238</a></p> <p style="text-align: right;">  <a href="#">Run BLAST with</a>       <a href="#">Run BLAST with</a> </p>
<b>Positive control</b>	WB: Mouse and rat lung lysate; Zebrafish lysate; K562, HepG2 and A549 cell lysate. IHC-P: Human pancreatic cancer tissue. ICC/IF: MCF7 cells.
<b>General notes</b>	<p>Reproducibility is key to advancing scientific discovery and accelerating scientists' next breakthrough.</p> <p>Abcam is leading the way with our range of recombinant antibodies, knockout-validated antibodies and knockout cell lines, all of which support improved reproducibility.</p> <p>We are also planning to innovate the way in which we present recommended applications and species on our product datasheets, so that only applications &amp; species that have been tested in our own labs, our suppliers or by selected trusted collaborators are covered by our Abpromise™ guarantee.</p> <p>In preparation for this, we have started to update the applications &amp; species that this product is Abpromise guaranteed for.</p> <p>We are also updating the applications &amp; species that this product has been "predicted to work</p>

with," however this information is not covered by our Abpromise guarantee.

Applications & species from publications and Abreviews that have not been tested in our own labs or in those of our suppliers are not covered by the Abpromise guarantee.

Please check that this product meets your needs before purchasing. If you have any questions, special requirements or concerns, please send us an inquiry and/or contact our Support team ahead of purchase. Recommended alternatives for this product can be found below, as well as customer reviews and Q&As.

## Properties

<b>Form</b>	Liquid
<b>Storage instructions</b>	Shipped at 4°C. Store at +4°C short term (1-2 weeks). Upon delivery aliquot. Store at -20°C long term. Avoid freeze / thaw cycle.
<b>Storage buffer</b>	pH: 7.40 Constituents: PBS, 50% Glycerol (glycerin, glycerine), 0.03% Proclin 300
<b>Purity</b>	Protein G purified
<b>Purification notes</b>	Purity >95%.
<b>Clonality</b>	Polyclonal
<b>Isotype</b>	IgG

## Applications

Our [Abpromise guarantee](#) covers the use of **ab236282** in the following tested applications.

The application notes include recommended starting dilutions; optimal dilutions/concentrations should be determined by the end user.

Application	Abreviews	Notes
WB		1/500 - 1/5000. Predicted molecular weight: 83 kDa.
ICC/IF		1/50 - 1/500.
IHC-P		1/100 - 1/500.

## Target

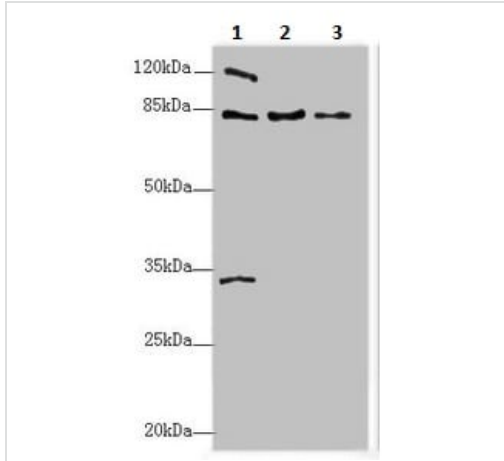
<b>Function</b>	Molecular chaperone that promotes the maturation, structural maintenance and proper regulation of specific target proteins involved for instance in cell cycle control and signal transduction. Undergoes a functional cycle that is linked to its ATPase activity. This cycle probably induces conformational changes in the client proteins, thereby causing their activation. Interacts dynamically with various co-chaperones that modulate its substrate recognition, ATPase cycle and chaperone function.
<b>Sequence similarities</b>	Belongs to the heat shock protein 90 family.
<b>Domain</b>	The TPR repeat-binding motif mediates interaction with TPR repeat-containing proteins.
<b>Post-translational</b>	Ubiquitinated in the presence of STUB1-UBE2D1 complex (in vitro).

**modifications**

ISGylated.  
S-nitrosylated; negatively regulates the ATPase activity.

**Cellular localization**

Cytoplasm. Melanosome. Identified by mass spectrometry in melanosome fractions from stage I to stage IV.

**Images**

Western blot - Anti-Hsp90 beta antibody (ab236282)

**All lanes :** Anti-Hsp90 beta antibody (ab236282) at 1/500 dilution

**Lane 1 :** Mouse lung lysate

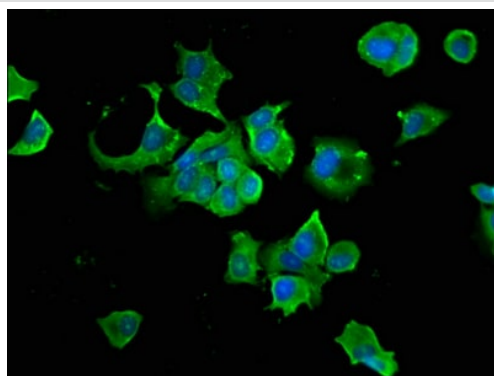
**Lane 2 :** Rat lung lysate

**Lane 3 :** Zebrafish lysate

**Secondary**

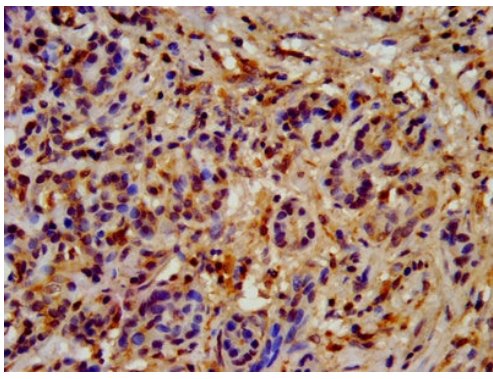
**All lanes :** Goat polyclonal to rabbit IgG at 1/10000 dilution

**Predicted band size:** 83 kDa



Immunocytochemistry/ Immunofluorescence - Anti-Hsp90 beta antibody (ab236282)

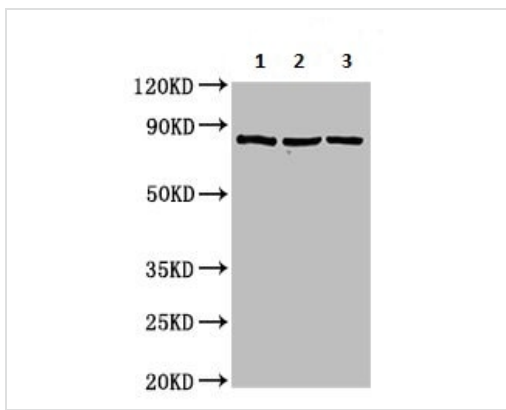
4% formaldehyde-fixed, 0.2% Triton X-100 permeabilised MCF7 (human breast adenocarcinoma cell line) cells labeling Hsp90 using ab236282 (green) at 1/66 dilution in ICC/IF. Secondary antibody was Alexa Fluor 488-conjugated goat anti-rabbit IgG (H+L). Counter stained with DAPI (blue).



Immunohistochemistry (Formalin/PFA-fixed paraffin-embedded sections) - Anti-Hsp90 beta antibody (ab236282)

Paraffin-embedded human pancreatic cancer tissue stained for Hsp90 using ab236282 at 1/200 dilution in immunohistochemical analysis.

After dewaxing and hydration, antigen retrieval was mediated by high pressure in a citrate buffer (pH 6.0). Section was blocked with 10% normal goat serum for 30 minutes at room temperature. Then primary antibody (1% BSA) was incubated at 4°C overnight. The primary is detected by a biotinylated secondary antibody and visualized using an HRP conjugates SP system.



Western blot - Anti-Hsp90 beta antibody (ab236282)

**All lanes** : Anti-Hsp90 beta antibody (ab236282) at 1/500 dilution

**Lane 1** : K562 (human chronic myelogenous leukemia cell line from bone marrow) cell lysate

**Lane 2** : HepG2 (human liver hepatocellular carcinoma cell line) cell lysate

**Lane 3** : A549 (human lung carcinoma cell line) cell lysate

#### Secondary

**All lanes** : Goat polyclonal to rabbit IgG at 1/50000 dilution

**Predicted band size:** 83 kDa

**Please note:** All products are "FOR RESEARCH USE ONLY. NOT FOR USE IN DIAGNOSTIC PROCEDURES"

#### Our Abpromise to you: Quality guaranteed and expert technical support

- Replacement or refund for products not performing as stated on the datasheet
- Valid for 12 months from date of delivery
- Response to your inquiry within 24 hours
- We provide support in Chinese, English, French, German, Japanese and Spanish
- Extensive multi-media technical resources to help you
- We investigate all quality concerns to ensure our products perform to the highest standards

If the product does not perform as described on this datasheet, we will offer a refund or replacement. For full details of the Abpromise, please visit <https://www.abcam.com/abpromise> or contact our technical team.

#### Terms and conditions

- Guarantee only valid for products bought direct from Abcam or one of our authorized distributors