


## Product datasheet

# Anti-HSPC142 antibody ab167202

[2 Images](#)

### Overview

<b>Product name</b>	Anti-HSPC142 antibody
<b>Description</b>	Mouse polyclonal to HSPC142
<b>Host species</b>	Mouse
<b>Tested applications</b>	<b>Suitable for:</b> WB, ICC/IF
<b>Species reactivity</b>	<b>Reacts with:</b> Human <b>Predicted to work with:</b> Rat, Cow, Common marmoset, Orangutan 
<b>Immunogen</b>	Full length protein, corresponding to amino acids 1-329 of Human HSPC142 (NP_001028721.1). <a href="#">Run BLAST with ExPASy</a> <a href="#">Run BLAST with NCBI</a>
<b>Positive control</b>	Hela cells; Lysate of 293T cells transfected with HSPC142.

### Properties

<b>Form</b>	Liquid
<b>Storage instructions</b>	Shipped at 4°C. Store at +4°C short term (1-2 weeks). Upon delivery aliquot. Store at -20°C long term.
<b>Storage buffer</b>	pH: 7.20 Constituent: 99% PBS
<b>Purity</b>	Protein A purified
<b>Clonality</b>	Polyclonal
<b>Isotype</b>	IgG

### Applications

Our [Abpromise guarantee](#) covers the use of **ab167202** in the following tested applications.

The application notes include recommended starting dilutions; optimal dilutions/concentrations should be determined by the end user.

Application	Abreviews	Notes
WB		Use a concentration of 1 µg/ml. Predicted molecular weight: 37 kDa.
ICC/IF		Use a concentration of 10 µg/ml.

## Target

### Function

Component of the BRCA1-A complex, a complex that specifically recognizes 'Lys-63'-linked ubiquitinated histones H2A and H2AX at DNA lesions sites, leading to target the BRCA1-BARD1 heterodimer to sites of DNA damage at double-strand breaks (DSBs). The BRCA1-A complex also possesses deubiquitinase activity that specifically removes 'Lys-63'-linked ubiquitin on histones H2A and H2AX. In the BRCA1-A complex, it is required for the complex integrity and its localization at DSBs. Probably also plays a role as a component of the BRISC complex, a multiprotein complex that specifically cleaves 'Lys-63'-linked ubiquitin. In these 2 complexes, it is probably required to maintain the stability of BRE/BRCC45 and help the 'Lys-63'-linked deubiquitinase activity mediated by BRCC3/BRCC36. component.

### Sequence similarities

Belongs to the BABAM1 family.

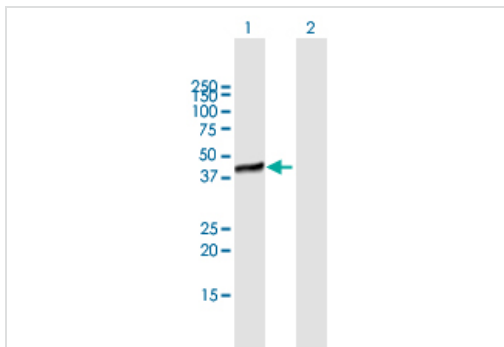
### Domain

The VWFA-like region is similar to the VWFA domain. Its presence reveals similarities between the structure of the 19S proteasome and the BRCA1-A complexes.

### Cellular localization

Cytoplasm. Nucleus. Localizes at sites of DNA damage at double-strand breaks.

## Images



Western blot - Anti-HSPC142 antibody (ab167202)

**All lanes :** Anti-HSPC142 antibody (ab167202) at 1 µg/ml

**Lane 1 :** Lysate of 293T cells transfected with HSPC142

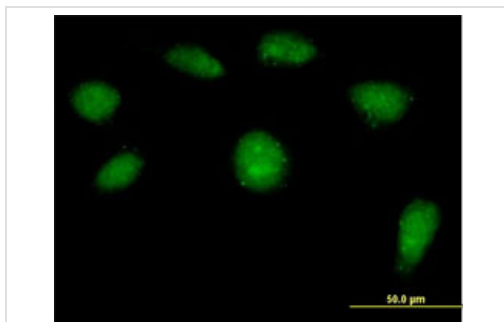
**Lane 2 :** Lysate of 293T cells (non-transfected)

Lysates/proteins at 15 µl per lane.

### Secondary

**All lanes :** Goat anti-mouse HRP conjugated antibody at 1/2500 dilution

**Predicted band size:** 37 kDa



Immunocytochemistry/ Immunofluorescence - Anti-HSPC142 antibody (ab167202)

Immunofluorescent analysis of HeLa cells labeling HSPC142 with ab167202 at 10 µg/ml.

**Please note:** All products are "FOR RESEARCH USE ONLY. NOT FOR USE IN DIAGNOSTIC PROCEDURES"

### **Our Abpromise to you: Quality guaranteed and expert technical support**

---

- Replacement or refund for products not performing as stated on the datasheet
- Valid for 12 months from date of delivery
- Response to your inquiry within 24 hours
  
- We provide support in Chinese, English, French, German, Japanese and Spanish
- Extensive multi-media technical resources to help you
- We investigate all quality concerns to ensure our products perform to the highest standards

If the product does not perform as described on this datasheet, we will offer a refund or replacement. For full details of the Abpromise, please visit <https://www.abcam.com/abpromise> or contact our technical team.

### **Terms and conditions**

---

- Guarantee only valid for products bought direct from Abcam or one of our authorized distributors