

Product datasheet

Human AKT3 Antibody Pair - BSA and Azide free ab241840

Recombinant RabMAb

3 Images

Overview

Product name	Human AKT3 Antibody Pair - BSA and Azide free
Assay type	ELISA set
Range	312 pg/ml - 20000 pg/ml
Species reactivity	Reacts with: Human
Product overview	<p>The Antibody Pair can be used to quantify Human AKT3. BSA and Azide free antibody pairs include unconjugated capture and detector antibodies suitable for sandwich ELISAs. The antibodies are provided at an approximate concentration of 1 mg/ml as measured by the protein A280 method. The recommended antibody orientation is based on internal optimization for ELISA-based assays. Antibody orientation is assay dependent and needs to be optimized for each assay type. Both capture and detector antibodies are rabbit monoclonal antibodies delivering consistent, specific, and sensitive results.</p> <p>For additional information on the performance of the antibody pair, see the equivalent SimpleStep ELISA® Kit (ab216946), which uses the same antibodies. However, due to differences in their formulation, this antibody pair cannot be used with the consumables provided with our SimpleStep ELISA Kits. Please note that the range provided for the pairs is only an estimation based on the performance of the related product using the same antibody pair. Performance of the antibody pair will depend on the specific characteristics of your assay. We guarantee the product works in sandwich ELISA, but we do not guarantee the sensitivity or dynamic range of the antibody pair in your assay.</p> <p>Download SDS here.</p>
Tested applications	Suitable for: Sandwich ELISA
Platform	Reagents

Properties

Storage instructions	Store at +4°C. Please refer to protocols.
Carrier free	Yes

Components	10 x 96 tests
Human AKT3 Capture Antibody (unconjugated)	1 x 100µg
Human AKT3 Detector Antibody (unconjugated)	1 x 100µg

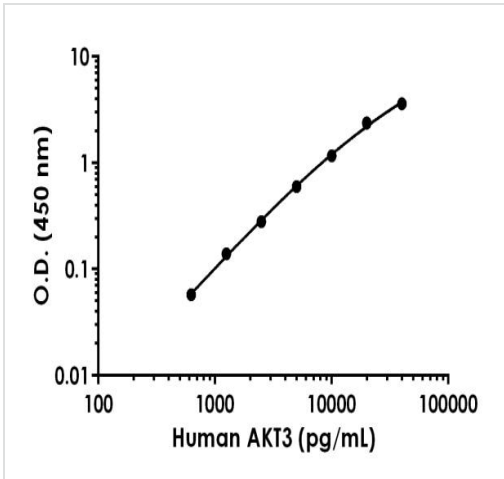
Function	IGF-1 leads to the activation of AKT3, which may play a role in regulating cell survival. Capable of phosphorylating several known proteins. Truncated isoform 2/PKB gamma 1 without the second serine phosphorylation site could still be stimulated but to a lesser extent.
Tissue specificity	In adult tissues, it is highly expressed in brain, lung and kidney, but weakly in heart, testis and liver. In fetal tissues, it is highly expressed in heart, liver and brain and not at all in kidney.
Sequence similarities	Belongs to the protein kinase superfamily. AGC Ser/Thr protein kinase family. RAC subfamily. Contains 1 AGC-kinase C-terminal domain. Contains 1 PH domain. Contains 1 protein kinase domain.
Domain	Binding of the PH domain to the phosphatidylinositol 3-kinase alpha (PI(3)K) results in its targeting to the plasma membrane.
Post-translational modifications	Phosphorylation on Thr-305 and Ser-472 is required for full activity (By similarity). Phosphorylated upon DNA damage, probably by ATM or ATR. Ubiquitinated. When fully phosphorylated and translocated into the nucleus, undergoes 'Lys-48'-polyubiquitination catalyzed by TTC3, leading to its degradation by the proteasome.
Cellular localization	Cytoplasm. Membrane. Membrane-associated after cell stimulation leading to its translocation.

Applications

The Abpromise guarantee Our [Abpromise guarantee](#) covers the use of ab241840 in the following tested applications. The application notes include recommended starting dilutions; optimal dilutions/concentrations should be determined by the end user.

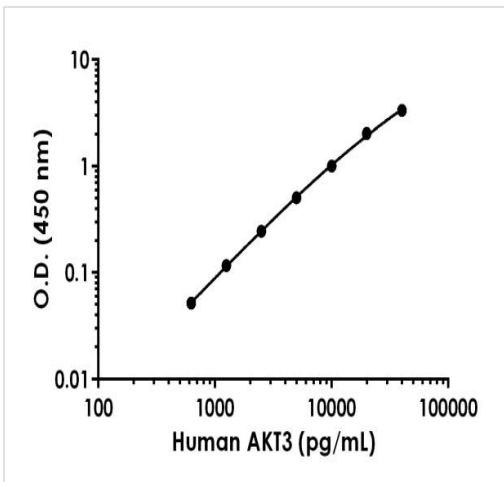
Application	Abreviews	Notes
Sandwich ELISA		Use at an assay dependent concentration.

Images



Sandwich ELISA - Human AKT3 Antibody Pair -
BSA and Azide free (ab241840)





Representative standard curve from corresponding SimpleStep ELISA® Kit ([ab216946](#)), which uses the same antibody pair. For additional information on the performance of pair and kit, refer to the corresponding kit datasheet. Due to differences in the formulation and format of the antibodies in this pair, they cannot be used as substitutes for the antibody components in our SimpleStep ELISA® Kits.



Sandwich ELISA - Human AKT3 Antibody Pair -
BSA and Azide free (ab241840)

Representative standard curve from corresponding SimpleStep ELISA® Kit ([ab216946](#)), which uses the same antibody pair. For additional information on the performance of pair and kit, refer to the corresponding kit datasheet. Due to differences in the formulation and format of the antibodies in this pair, they cannot be used as substitutes for the antibody components in our SimpleStep ELISA® Kits.

Powered by
recombinant antibodies

 <p>Research with confidence Consistent and reproducible results</p>	 <p>Long-term and scalable supply Recombinant technology</p>
 <p>Success from the first experiment Confirmed specificity</p>	 <p>Ethical standards compliant Animal-free production</p>

Sandwich ELISA - Human AKT3 Antibody Pair -
BSA and Azide free (ab241840)

To learn more about the advantages of recombinant antibodies see [here](#).

Please note: All products are "FOR RESEARCH USE ONLY. NOT FOR USE IN DIAGNOSTIC PROCEDURES"

Our Abpromise to you: Quality guaranteed and expert technical support

- Replacement or refund for products not performing as stated on the datasheet
- Valid for 12 months from date of delivery
- Response to your inquiry within 24 hours

- We provide support in Chinese, English, French, German, Japanese and Spanish
- Extensive multi-media technical resources to help you
- We investigate all quality concerns to ensure our products perform to the highest standards

If the product does not perform as described on this datasheet, we will offer a refund or replacement. For full details of the Abpromise, please visit <https://www.abcam.com/abpromise> or contact our technical team.

Terms and conditions

- Guarantee only valid for products bought direct from Abcam or one of our authorized distributors