

Product datasheet

Human ANXA6 (Annexin-6) knockout HeLa cell lysate ab257351

5 Images

Overview

Product name	Human ANXA6 (Annexin-6) knockout HeLa cell lysate
Product overview	Knockout cell lysate achieved by CRISPR/Cas9.
Parental Cell Line	HeLa
Organism	Human
Mutation description	Knockout achieved by using CRISPR/Cas9, 1 bp insertion in exon7 and 5 bp deletion in exon7.
Passage number	<20
Knockout validation	Sanger Sequencing, Western Blot (WB)
Reconstitution notes	To use as WB control, resuspend the lyophilizate in 50 µL of LDS* Sample Buffer to have a final concentration of 2 mg/ml. For reducing conditions, we recommend a final concentration of 0.1 M DTT. <i>*Usage of SDS sample buffer is not recommended with these lyophilized lysates.</i>

Notes

Lysate preparation: Our lysates are made using RIPA buffer to which we add a protease inhibitor cocktail and phosphatase inhibitor cocktail (ratio: 300:100:10). *This means that the protein of interest is denatured.* If you require a native form of the protein please use the live cell version - found [here](#). Please refer to our lysis protocol for further details on how our lysates are prepared.

User storage instructions: Lyophilizate may be stored at 4°C. After reconstitution, store at -20°C for short-term storage or -80°C for long-term storage.

Access thousands of knockout cell lysates, generated from commonly used cancer cell lines. [See here for more information on knockout cell lysates.](#)

Abcam has not and does not intend to apply for the REACH Authorisation of customers' uses of products that contain European Authorisation list (Annex XIV) substances.

It is the responsibility of our customers to check the necessity of application of REACH Authorisation, and any other relevant authorisations, for their intended uses.

This product is subject to limited use licenses from The Broad Institute, ERS Genomics Limited and Sigma-Aldrich Co. LLC, and is developed with patented technology. For full details of the licenses and patents please refer to our [limited use license](#) and [patent pages](#).

Tested applications **Suitable for:** WB

Properties

Storage instructions Store at -80°C. Please refer to protocols.

Components	1 kit
ab260969 - Human ANXA6 knockout HeLa cell lysate	1 x 100µg
ab255929 - Human wild-type HeLa cell lysate	1 x 100µg

Cell type epithelial
Disease Adenocarcinoma
Gender Female
STR Analysis Amelogenin X D5S818: 11, 12 D13S317: 12, 13.3 D7S820: 8, 12 D16S539: 9, 10 vWA: 16, 18 TH01: 7 TPOX: 8,12 CSF1PO: 9, 10

Target

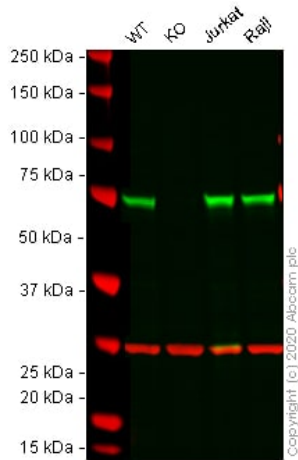
Function May associate with CD21. May regulate the release of Ca(2+) from intracellular stores.
Sequence similarities Belongs to the annexin family.
Contains 8 annexin repeats.
Domain A pair of annexin repeats may form one binding site for calcium and phospholipid.
Post-translational modifications Phosphorylated in response to growth factor stimulation.
Cellular localization Cytoplasm. Melanosome. Identified by mass spectrometry in melanosome fractions from stage I to stage IV.

Applications

The Abpromise guarantee Our [Abpromise guarantee](#) covers the use of ab257351 in the following tested applications. The application notes include recommended starting dilutions; optimal dilutions/concentrations should be determined by the end user.

Application	Abreviews	Notes
WB		Use at an assay dependent concentration. Predicted molecular weight: 76 kDa.

Images



Western blot - Human ANXA6 (Annexin-6) knockout HeLa cell lysate (ab257351)

Lane 1: Wild-type HeLa cell lysate 20 ug

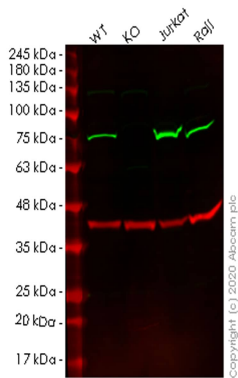
Lane 2: ANXA6 knockout HeLa cell lysate 20 ug

Lane 3: Jurkat cell lysate 20 ug

Lane 4: Raji cell lysate 20 ug

Lanes 1 - 4: Merged signal (red and green). Green - [ab199422](#) observed at 75 kDa. Red - loading control, [ab8245](#) (Mouse anti-GAPDH antibody [6C5]) observed at 37kDa.

[ab199422](#) was shown to react with Annexin-6/ANXA6 in wild-type HeLa cells in western blot with loss of signal observed in ANXA6 knockout cell line [ab265677](#) (ANXA6 knockout cell lysate [ab257351](#)). Wild-type and ANXA6 knockout HeLa cell lysates were subjected to SDS-PAGE. Membranes were blocked in 3% milk in TBS-T (0.1% Tween[®]) before incubation with [ab199422](#) and [ab8245](#) (Mouse anti-GAPDH antibody [6C5]) overnight at 4 °C at a 1 in 1000 dilution and a 1 in 20000 dilution respectively. Blots were incubated with Goat anti-Rabbit IgG H&L (IRDye[®] 800CW) preabsorbed ([ab216773](#)) and Goat anti-Mouse IgG H&L (IRDye[®] 680RD) preabsorbed ([ab216776](#)) secondary antibodies at 1 in 20000 dilution for 1 hour at room temperature before imaging.



Western blot - Human ANXA6 knockout HeLa cell lysate (ab257351)

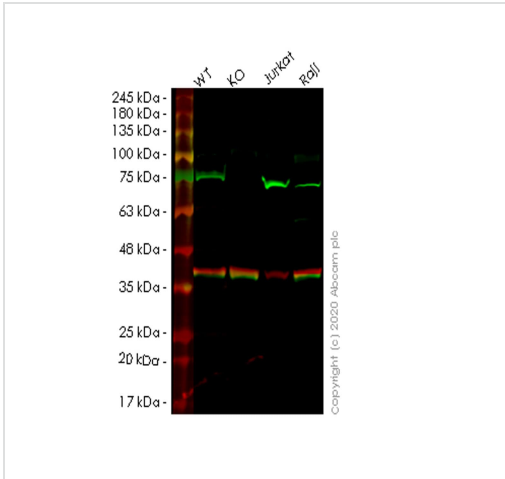
Lane 1: Wild-type HeLa cell lysate (20 ug)

Lane 2: ANXA6 knockout HeLa cell lysate (20 ug)

Lane 3: Jurkat cell lysate (20 ug)

Lane 4: Raji cell lysate (20 ug)

[ab201023](#) was shown to specifically react with Annexin-6/ANXA6 in wild-type HeLa cells. Loss of signal was observed when knockout cell line [ab265677](#) (knockout cell lysate [ab257351](#)) was used. Wild-type and Annexin-6/ANXA6 knockout samples were subjected to SDS-PAGE. [ab201023](#) and Anti-GAPDH antibody [6C5] - Loading Control ([ab8245](#)) were incubated at room temperature for 2.5 hours at 1 in 1000 dilution and 1 in 20000 dilution respectively. Blots were developed with Goat anti-Rabbit IgG H&L (IRDye[®] 800CW) preadsorbed ([ab216773](#)) and Goat anti-Mouse IgG H&L (IRDye[®] 680RD) preadsorbed ([ab216776](#)) secondary antibodies at 1 in 20000 dilution for 1 hour at room temperature before imaging.



Western blot - Human ANXA6 knockout HeLa cell lysate (ab257351)

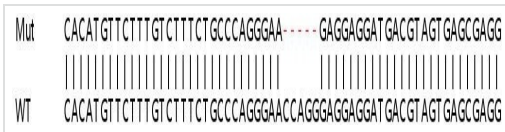
Lane 1: Wild-type HeLa cell lysate (20 ug)

Lane 2: ANXA6 knockout HeLa cell lysate (20 ug)

Lane 3: Jurkat cell lysate (20 ug)

Lane 4: Raji cell lysate (20 ug)

ab201024 was shown to specifically react with Annexin-6/ANXA6 in wild-type HeLa cells. Loss of signal was observed when knockout cell line ab265677 (knockout cell lysate ab257351) was used. Wild-type and Annexin-6/ANXA6 knockout samples were subjected to SDS-PAGE. ab201024 and Anti-GAPDH antibody [6C5] - Loading Control (ab8245) were incubated at room temperature for 2.5 hours at 1 in 1000 dilution and 1 in 20000 dilution respectively. Blots were developed with Goat anti-Rabbit IgG H&L (IRDye® 800CW) preadsorbed (ab216773) and Goat anti-Mouse IgG H&L (IRDye® 680RD) preadsorbed (ab216776) secondary antibodies at 1 in 20000 dilution for 1 hour at room temperature before imaging.



Sanger Sequencing - Human ANXA6 knockout HeLa cell lysate (ab257351)

Allele-1: 5 bp deletion in exon7



Sanger Sequencing - Human ANXA6 knockout HeLa cell lysate (ab257351)

Allele-2: 1 bp insertion in exon7

Please note: All products are "FOR RESEARCH USE ONLY. NOT FOR USE IN DIAGNOSTIC PROCEDURES"

Our Promise to you: Quality guaranteed and expert technical support

- Replacement or refund for products not performing as stated on the datasheet
- Valid for 12 months from date of delivery
- Response to your inquiry within 24 hours
- We provide support in Chinese, English, French, German, Japanese and Spanish
- Extensive multi-media technical resources to help you

- We investigate all quality concerns to ensure our products perform to the highest standards

If the product does not perform as described on this datasheet, we will offer a refund or replacement. For full details of the Abpromise, please visit <https://www.abcam.com/abpromise> or contact our technical team.

Terms and conditions

- Guarantee only valid for products bought direct from Abcam or one of our authorized distributors