

Product datasheet

# Human Apolipoprotein AII Matched Antibody Pair Kit ab216794

Recombinant

2 Images

Overview

---

<b>Product name</b>	Human Apolipoprotein AII Matched Antibody Pair Kit
<b>Detection method</b>	Colorimetric
<b>Assay type</b>	ELISA set
<b>Sensitivity</b>	11.2 pg/ml
<b>Range</b>	31.25 pg/ml - 2000 pg/ml
<b>Species reactivity</b>	<b>Reacts with:</b> Human
<b>Product overview</b>	<p>Human Apolipoprotein AII Matched Antibody Pair Kits include a capture and a biotinylated detector antibody pair, along with a calibrated protein standard, suitable for sandwich ELISA. The Matched Antibody Pair Kit can be used to quantify native and recombinant human Apolipoprotein AII.</p> <p>Optimization of the kit reagents to sample type, immunoassay format or instrumentation may be required. Guidelines for use of this kit in a standard 96-well microplate sandwich ELISA using HRP/TMB system of colorimetric detection is described in this assay procedure for the purposes of quantification.</p> <p>Protocol information and tips on the use of the Matched Antibody Pair kits for sandwich ELISA can be found on our <a href="#">website</a>. An accessory pack can be purchased which includes buffer reagents required to perform 10 x 96-well plate sandwich ELISAs (<a href="#">ab210905</a>).</p> <p>For additional information on the performance of the antibody pair used in this kit, please see our equivalent SimpleStep ELISA kit <a href="#">ab184859</a>. Please note that while the antibody pair is the same provided in the corresponding SimpleStep ELISA Kit, due to differences in their formulation, this antibody pair cannot be used with the consumables provided with our SimpleStep ELISA Kits.</p>
<b>Tested applications</b>	<b>Suitable for:</b> ELISA
<b>Platform</b>	Reagents

Properties

---

## Storage instructions

Store at -20°C. Please refer to protocols.

Components	10 x 96 tests	5 x 96 tests
Human Apolipoprotein All Capture Antibody	2 x 50µg	1 x 50µg
Human Apolipoprotein All Detector Antibody	2 x 12.5µg	1 x 12.5µg
Human Apolipoprotein All Lyophilized Protein	2 vials	1 vial

**Function** May stabilize HDL (high density lipoprotein) structure by its association with lipids, and affect the HDL metabolism.

**Tissue specificity** Plasma; synthesized in the liver and intestine.

**Sequence similarities** Belongs to the apolipoprotein A2 family.

**Post-translational modifications** Phosphorylation sites are present in the extracellular medium.

**Cellular localization** Secreted.

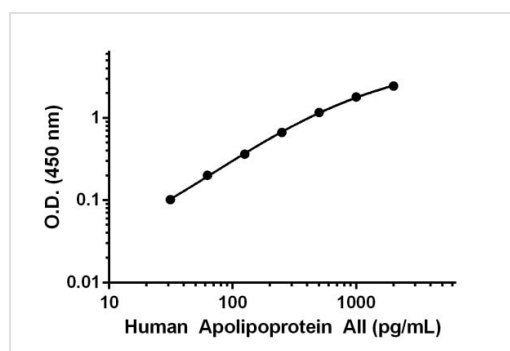
## Applications

Our [Abpromise guarantee](#) covers the use of **ab216794** in the following tested applications.

The application notes include recommended starting dilutions; optimal dilutions/concentrations should be determined by the end user.

Application	Abreviews	Notes
ELISA		Use at an assay dependent concentration.

## Images



Standard calibration curve. Background subtracted values are graphed.

Human Apolipoprotein All standard curve.

Powered by  
recombinant antibodies



**Research with confidence**  
Consistent and reproducible results



**Long-term and scalable supply**  
Recombinant technology



**Success from the first experiment**  
Confirmed specificity



**Ethical standards compliant**  
Animal-free production

Sandwich ELISA - Human Apolipoprotein AII  
Matched Antibody Pair Kit (ab216794)

To learn more about the advantages of recombinant antibodies see [here](#).

**Please note:** All products are "FOR RESEARCH USE ONLY. NOT FOR USE IN DIAGNOSTIC PROCEDURES"

### Our Abpromise to you: Quality guaranteed and expert technical support

---

- Replacement or refund for products not performing as stated on the datasheet
- Valid for 12 months from date of delivery
- Response to your inquiry within 24 hours
- We provide support in Chinese, English, French, German, Japanese and Spanish
- Extensive multi-media technical resources to help you
- We investigate all quality concerns to ensure our products perform to the highest standards

If the product does not perform as described on this datasheet, we will offer a refund or replacement. For full details of the Abpromise, please visit <https://www.abcam.com/abpromise> or contact our technical team.

### Terms and conditions

---

- Guarantee only valid for products bought direct from Abcam or one of our authorized distributors