

Product datasheet

Human Atherosclerosis Antibody Array - Membrane (20 targets) ab169803

1 Image

Overview

| | |
|---------------------------|---|
| Product name | Human Atherosclerosis Antibody Array - Membrane (20 targets) |
| Sample type | Cell culture supernatant, Saliva, Milk, Urine, Serum, Plasma, Cell culture extracts, Other biological fluids, Whole Blood, Tissue Extracts, Cell Lysate, Cell culture media |
| Assay type | Semi-quantitative |
| Species reactivity | Reacts with: Human |
| Product overview | ab169803 detects 20 Human Atherosclerotic Factors in 4 or 8 samples. Suitable for all liquid sample types. |

Targets: Eotaxin-1, G-CSF, GDNF, GM-CSF, ICAM-1, IFN-gamma, IL-1 alpha, IL-1 beta, IL-1 sRI, IL-1 sRII, MCP-1, M-CSF, TGF beta 1, TGF beta 2, TGF beta 3, TNF alpha, TNF beta, MIP-3 alpha, PDGF-BB, RANTES

[Learn more about membrane antibody arrays](#)

Notes If you are interested in this cytokine array, arrays [ab169817](#), [ab133998](#) and [ab169809](#) may also be of interest. A list of human antibody membrane arrays is available [here](#).

Abcam has not and does not intend to apply for the REACH Authorisation of customers' uses of products that contain European Authorisation list (Annex XIV) substances.

It is the responsibility of our customers to check the necessity of application of REACH Authorisation, and any other relevant authorisations, for their intended uses.

Tested applications **Suitable for:** Multiplex Protein Detection

Properties

Storage instructions Store at -20°C. Please refer to protocols.

| Components | 1 x 4 Membranes | 1 x 8 Membranes |
|------------------------------------|-----------------|-----------------|
| 1,000X HRP-Conjugated Streptavidin | 1 x 50µl | 1 x 50µl |

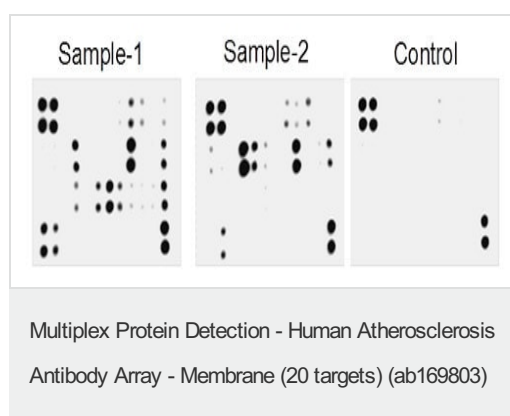
| Components | 1 x 4 Membranes | 1 x 8 Membranes |
|--|-----------------|-----------------|
| 1X Blocking Buffer | 1 x 25ml | 2 x 25ml |
| 2000X Biotin-Conjugated Anti Cytokines | 2 vials | 4 vials |
| 20X Wash Buffer I | 1 x 10ml | 1 x 20ml |
| 20X Wash Buffer II | 1 x 10ml | 1 x 20ml |
| 2X Cell Lysis Buffer | 1 x 10ml | 1 x 16ml |
| 8-Well Incubation Tray (with Lid) | 1 unit | 1 unit |
| Atherosclerosis Antibody Array Membranes | 4 units | 8 units |
| Detection Buffer C | 1 x 1.5ml | 1 x 2.5ml |
| Detection Buffer D | 1 x 1.5ml | 1 x 2.5ml |

Applications

The Abpromise guarantee Our [Abpromise guarantee](#) covers the use of ab169803 in the following tested applications. The application notes include recommended starting dilutions; optimal dilutions/concentrations should be determined by the end user.

| Application | Abreviews | Notes |
|------------------------------------|-----------|--|
| Multiplex Protein Detection | | Use at an assay dependent concentration. |

Images



Typical results obtained with Abcam Membrane Antibody Arrays. Image above presents typical images obtained with Abcam Human Cytokine Membrane Antibody Array. These membranes were probed with conditioned media from two different cell lines. Membranes were exposed to film at RT for 1 min.

Please note: All products are "FOR RESEARCH USE ONLY. NOT FOR USE IN DIAGNOSTIC PROCEDURES"

Our Abpromise to you: Quality guaranteed and expert technical support

- Replacement or refund for products not performing as stated on the datasheet
- Valid for 12 months from date of delivery
- Response to your inquiry within 24 hours

- We provide support in Chinese, English, French, German, Japanese and Spanish
- Extensive multi-media technical resources to help you
- We investigate all quality concerns to ensure our products perform to the highest standards

If the product does not perform as described on this datasheet, we will offer a refund or replacement. For full details of the Abpromise, please visit <https://www.abcam.com/abpromise> or contact our technical team.

Terms and conditions

- Guarantee only valid for products bought direct from Abcam or one of our authorized distributors