

Product datasheet

Human CD157 ELISA kit ab267623

1 Image

Overview

Product name Human CD157 ELISA kit

Detection method Colorimetric

Precision

Intra-assay

Sample	n	Mean	SD	CV%
Overall				< 10%

Inter-assay

Sample	n	Mean	SD	CV%
Overall				< 12%

Sample type Cell culture supernatant, Serum, Plasma

Assay type Sandwich (quantitative)

Sensitivity 0.06 ng/ml

Range 0.051 ng/ml - 12.5 ng/ml

Recovery

Sample specific recovery

Sample type	Average %	Range
Serum	130.9	124% - 138%
Plasma	129.8	113% - 145%
Cell culture media	123.4	112% - 140%

Assay duration Multiple steps standard assay

Species reactivity **Reacts with:** Human

Product overview Human CD157 ELISA Kit is designed for the quantitative determination of CD157 in cell culture supernatants, plasma and serum samples.

This assay employs an antibody specific for human CD157 coated on a 96-well plate. Standards and samples are pipetted into the wells and CD157 present in a sample is bound to the wells by

the immobilized antibody. The wells are washed and biotinylated anti-human CD157 antibody is added. After washing away unbound biotinylated antibody, HRP-conjugated streptavidin is pipetted to the wells. The wells are again washed, a TMB substrate solution is added to the wells and color develops in proportion to the amount of CD157 bound. The Stop Solution changes the color from blue to yellow, and the intensity of the color is measured at 450 nm.

This ELISA kit shows no cross-reactivity with the following cytokines tested: Human AMIGO, Aminopeptidase LRAP (ERAP2), Amnionless, Arylsulfatase A, Bcl-w, CD109, CD34, CD83, CLEC-1, CLEC10A (CD301), CMG-2, CREG, Cystatin SN, Cytokeratin-8, Dectin-1 (CLEC7A), Desmocollin-3, Endoglycan, Galectin-4, HAPLN1, Jagged 1, Langerin (CD207), Lumican, Matriptase (ST14), MEP1B, Nectin-3, OX40 (TNFRSF4), OX40 Ligand (TNFSF4), p27, Pappalysin-2, Plexin B3, Plexin D1, proGRP, PSA-total, Reg1B, RGM-A, ROBO2, Spinesin, TWEAK R (TNFRSF12), ULBP-3.

Platform Pre-coated microplate (12 x 8 well strips)

Properties

Storage instructions Store at -20°C. Please refer to protocols.

Components	1 x 96 tests
100X HRP-Streptavidin Concentrate	1 x 200µl
20X Wash Buffer	1 x 25ml
5X Assay Diluent	1 x 15ml
Anti-Human CD157 coated Microplate (12 x 8 wells)	1 unit
Biotinylated Anti-Human CD157 Detection Antibody	2 vials
Human CD157 Standard (Lyophilized)	2 vials
Stop Solution	1 x 8ml
TMB Substrate Solution	1 x 12ml

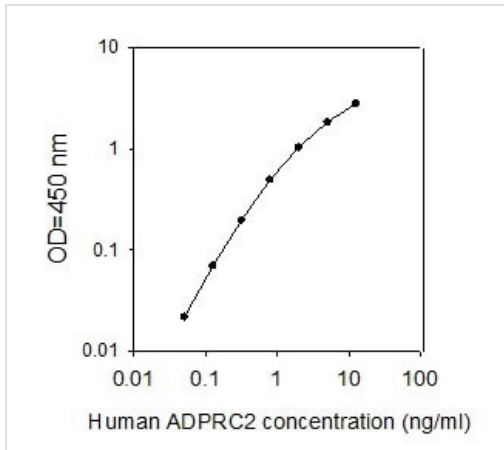
Function Synthesizes the second messengers cyclic ADP-ribose and nicotinate-adenine dinucleotide phosphate, the former a second messenger that elicits calcium release from intracellular stores. May be involved in pre-B-cell growth.

Tissue specificity Widely expressed.

Sequence similarities Belongs to the ADP-ribosyl cyclase family.

Cellular localization Cell membrane.

Images



This standard curve is for demonstration only. A standard curve must be run with each assay.

Example data

Please note: All products are "FOR RESEARCH USE ONLY. NOT FOR USE IN DIAGNOSTIC PROCEDURES"

Our Abpromise to you: Quality guaranteed and expert technical support

- Replacement or refund for products not performing as stated on the datasheet
- Valid for 12 months from date of delivery
- Response to your inquiry within 24 hours
- We provide support in Chinese, English, French, German, Japanese and Spanish
- Extensive multi-media technical resources to help you
- We investigate all quality concerns to ensure our products perform to the highest standards

If the product does not perform as described on this datasheet, we will offer a refund or replacement. For full details of the Abpromise, please visit <https://www.abcam.com/abpromise> or contact our technical team.

Terms and conditions

- Guarantee only valid for products bought direct from Abcam or one of our authorized distributors