

## Product datasheet

# Human CD244 ELISA Kit (2B4) ab213758

1 Image

### Overview

**Product name** Human CD244 ELISA Kit (2B4)

**Detection method** Colorimetric

**Precision**

Intra-assay

| Sample | n  | Mean      | SD    | CV%  |
|--------|----|-----------|-------|------|
| 1      | 16 | 0.45ng/ml | 0.022 | 4.9% |
| 2      | 16 | 1.2ng/ml  | 0.076 | 6.3% |
| 3      | 16 | 3.2ng/ml  | 0.186 | 5.8% |

Inter-assay

| Sample | n  | Mean      | SD    | CV%  |
|--------|----|-----------|-------|------|
| 1      | 24 | 0.43ng/ml | 0.027 | 6.2% |
| 2      | 24 | 1.3ng/ml  | 0.098 | 7.5% |
| 3      | 24 | 2.9ng/ml  | 0.194 | 6.7% |

**Sample type** Cell culture supernatant, Serum, Cell Lysate, Hep Plasma, EDTA Plasma

**Assay type** Sandwich (quantitative)

**Sensitivity** < 10 pg/ml

**Range** 15.6 pg/ml - 1000 pg/ml

**Assay time** 3h 30m

**Assay duration** Multiple steps standard assay

**Species reactivity** **Reacts with:** Human

**Product overview** The Human CD244 Enzyme-Linked Immunosorbent Assay (ELISA) kit (2B4) (ab213758) is designed for the quantitative measurement of Human CD244 in cell culture supernatants, cell lysates, tissue homogenates, serum and plasma (heparin, EDTA).

The ELISA kit is based on standard sandwich enzyme-linked immunosorbent assay technology. A

monoclonal antibody from mouse specific for CD244/2B4 has been pre-coated onto 96-well plates. Standards (Expression system for standard: NSO; Immunogen sequence: C22-R221) and test samples are added to the wells, a biotinylated detection polyclonal antibody from goat specific for CD244/2B4 is added subsequently and then followed by washing with PBS or TBS buffer. Avidin-Biotin-Peroxidase Complex is added and unbound conjugates are washed away with PBS or TBS buffer. HRP substrate TMB is used to visualize HRP enzymatic reaction. TMB is catalyzed by HRP to produce a blue color product that changed into yellow after adding acidic stop solution. The density of yellow is proportional to the Human CD244/2B4 amount of sample captured in plate.

**Notes** CD244 (Cluster of Differentiation 244) is a human protein encoded by the CD244 gene. It is also known as Natural Killer Cell Receptor 2B4. Members of the CD2 family adhere to each other instead, the cell surface glycoprotein 2B4 is related to CD2 and is implicated in the regulation of NK and T-cell function. The 2B4 gene was mapped to 1q22 on gene map, where SLAM, CD48, CD84 and LY9 are also located. Using recombinant human NK cell-activating ligand 2B4 fused to domains 3 and 4 of rodent Cd4 and flow cytometric analysis, It was found that CD48 binds to 2B4. BIAcore surface plasmon resonance analysis showed that the affinity of CD48 for 2B4 is approximately 10-fold higher than that shown for CD48 and CD2.

**Platform** Pre-coated microplate (12 x 8 well strips)

**Properties**

**Storage instructions** Store at -20°C. Please refer to protocols.

| Components  | Identifier | 1 x 96 tests |
|---|------------|--------------|
| ABC Diluent Buffer                                | Blue Cap   | 1 x 12ml     |
| Adhesive Plate Seal                               |            | 4 units      |
| Antibody Diluent Buffer                           | Green Cap  | 1 x 12ml     |
| Anti-Human CD244 coated Microplate (12 x 8 wells) |            | 1 unit       |
| Avidin-Biotin-Peroxidase Complex (ABC)            |            | 1 x 130µl    |
| Biotinylated anti- Human CD244 antibody           |            | 1 x 130µl    |
| Lyophilized recombinant Human CD244 standard      |            | 2 vials      |
| Sample Diluent Buffer                             | Green Cap  | 1 x 30ml     |
| TMB Color Developing Agent                        | Black Cap  | 1 x 10ml     |
| TMB Stop Solution                                 | Yellow Cap | 1 x 10ml     |

**Function** Modulate other receptor-ligand interactions to enhance leukocyte activation.

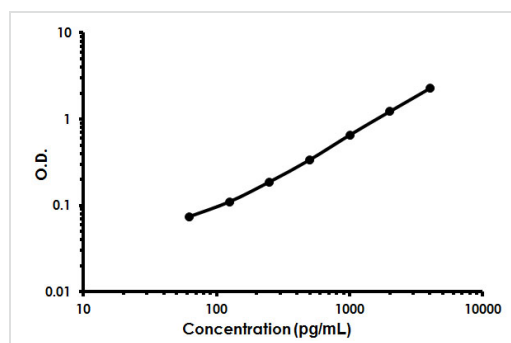
**Tissue specificity** Expressed in spleen, PBL, followed by lung, liver, testis and small intestine. Expressed not only in NK cells, but also on monocytes and basophils.

**Sequence similarities** Contains 2 Ig-like (immunoglobulin-like) domains.

**Cellular localization** Membrane.

## Images

---



Human CD244 ELISA Kit (2B4) (ab213758) Standard Curve.

Human CD244 ELISA Kit (2B4) (ab213758) Standard Curve.

**Please note:** All products are "FOR RESEARCH USE ONLY. NOT FOR USE IN DIAGNOSTIC PROCEDURES"

### Our Abpromise to you: Quality guaranteed and expert technical support

---

- Replacement or refund for products not performing as stated on the datasheet
- Valid for 12 months from date of delivery
- Response to your inquiry within 24 hours
- We provide support in Chinese, English, French, German, Japanese and Spanish
- Extensive multi-media technical resources to help you
- We investigate all quality concerns to ensure our products perform to the highest standards

If the product does not perform as described on this datasheet, we will offer a refund or replacement. For full details of the Abpromise, please visit <https://www.abcam.com/abpromise> or contact our technical team.

### Terms and conditions

---

- Guarantee only valid for products bought direct from Abcam or one of our authorized distributors