

Product datasheet

Human EGF ELISA Kit ab100504

[2 References](#) [3 Images](#)

Overview

Product name	Human EGF ELISA Kit
Detection method	Colorimetric
Sample type	Cell culture supernatant, Serum, Plasma
Assay type	Sandwich (quantitative)
Sensitivity	< 1 pg/ml
Range	0.82 pg/ml - 200 pg/ml
Recovery	95 %

Sample specific recovery

Sample type	Average %	Range
Cell culture supernatant	95.52	85% - 106%
Serum	94.52	83% - 104%
Plasma	93.76	84% - 105%

Assay duration Multiple steps standard assay

Species reactivity **Reacts with:** Human

Product overview Abcam's EGF Human ELISA (Enzyme-Linked Immunosorbent Assay) kit is an *in vitro* enzyme-linked immunosorbent assay for the quantitative measurement of Human EGF in serum, plasma and cell culture supernatants.

This assay employs an antibody specific for Human EGF coated on a 96-well plate. Standards and samples are pipetted into the wells and EGF present in a sample is bound to the wells by the immobilized antibody. The wells are washed and biotinylated anti-Human EGF antibody is added. After washing away unbound biotinylated antibody, HRP-conjugated streptavidin is pipetted to the wells. The wells are again washed, a TMB substrate solution is added to the wells and color develops in proportion to the amount of EGF bound. The Stop Solution changes the color from blue to yellow, and the intensity of the color is measured at 450 nm.

Notes Optimisation may be required with urine samples.

Platform Microplate

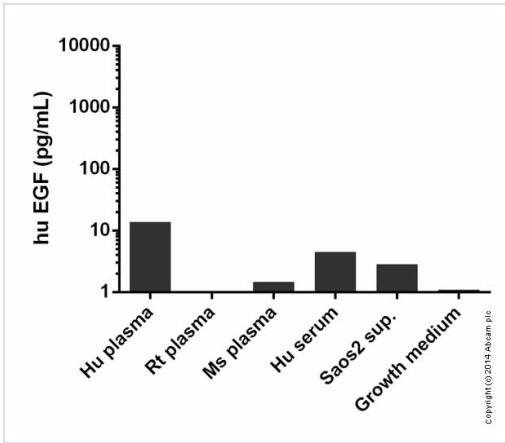
Properties

Storage instructions Store at -20°C. Please refer to protocols.

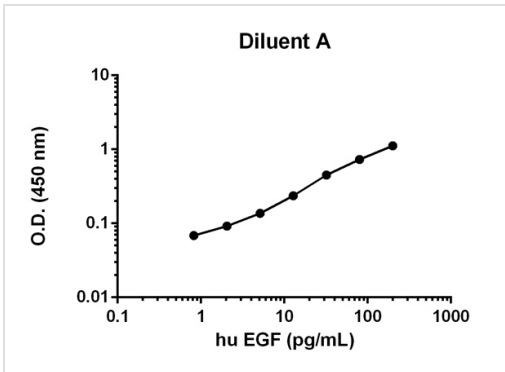
Components	1 x 96 tests
20X Wash Buffer Concentrate	1 x 25ml
5X Assay Diluent B	1 x 15ml
600X HRP-Streptavidin Concentrate	1 x 200µl
Assay Diluent A	1 x 30ml
Biotinylated anti-Human EGF (lyophilized)	2 vials
EGF Microplate (12 strips x 8 wells)	1 unit
Recombinant Human EGF Standard (lyophilized)	2 vials
Stop Solution	1 x 8ml
TMB One-Step Substrate Reagent	1 x 12ml

Function	EGF stimulates the growth of various epidermal and epithelial tissues in vivo and in vitro and of some fibroblasts in cell culture. Magnesiotropic hormone that stimulates magnesium reabsorption in the renal distal convoluted tubule via engagement of EGFR and activation of the magnesium channel TRPM6. Can induce neurite outgrowth in motoneurons of the pond snail <i>Lymnaea stagnalis</i> in vitro (PubMed:10964941).
Tissue specificity	Expressed in kidney, salivary gland, cerebrum and prostate.
Involvement in disease	Hypomagnesemia 4
Sequence similarities	Contains 9 EGF-like domains. Contains 9 LDL-receptor class B repeats.
Post-translational modifications	O-glycosylated with core 1-like and core 2-like glycans. It is uncertain if Ser-954 or Thr-955 is O-glycosylated. The modification here shows glycan heterogeneity: HexHexNAc (major) and Hex2HexNAc2 (minor).
Cellular localization	Membrane.

Images

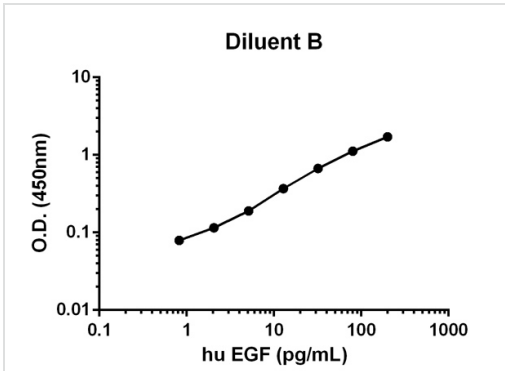


Sandwich ELISA - ab100504 huEGF



Standard curve in Diluent A : mean of duplicates (+/-SD)

hu EGF (ab100504)



Standard curve in Diluent B : mean of duplicates (+/-SD)

huEGF (ab100504)

Please note: All products are "FOR RESEARCH USE ONLY. NOT FOR USE IN DIAGNOSTIC PROCEDURES"

Our Abpromise to you: Quality guaranteed and expert technical support

- Replacement or refund for products not performing as stated on the datasheet
- Valid for 12 months from date of delivery
- Response to your inquiry within 24 hours

- We provide support in Chinese, English, French, German, Japanese and Spanish
- Extensive multi-media technical resources to help you
- We investigate all quality concerns to ensure our products perform to the highest standards

If the product does not perform as described on this datasheet, we will offer a refund or replacement. For full details of the Abpromise, please visit <https://www.abcam.com/abpromise> or contact our technical team.

Terms and conditions

- Guarantee only valid for products bought direct from Abcam or one of our authorized distributors