

Product datasheet

Human FTH1 knockout HEK293T cell line ab266581

2 Images

Overview

Product name	Human FTH1 knockout HEK293T cell line
Parental Cell Line	HEK293T
Organism	Human
Mutation description	Knockout achieved by using CRISPR/Cas9, Homozygous: 5 bp deletion in exon 1
Passage number	<20
Knockout validation	Sanger Sequencing, Western Blot (WB)
Tested applications	Suitable for: WB
Biosafety level	2
General notes	<p>Recommended control: Human wild-type HEK293T cell line (ab255449). Please note a wild-type cell line is not automatically included with a knockout cell line order, if required please add recommended wild-type cell line at no additional cost using the code WILDTYPE-TMTK1.</p> <p>Cryopreservation cell medium: Cell Freezing Medium-DMSO Serum free media, contains 8.7% DMSO in MEM supplemented with methyl cellulose.</p> <p>Culture medium: DMEM (High Glucose) + 10% FBS</p> <p>Initial handling guidelines: Upon arrival, the vial should be stored in liquid nitrogen vapor phase and not at -80°C. Storage at -80°C may result in loss of viability.</p> <ol style="list-style-type: none"> 1. Thaw the vial in 37°C water bath approximately 1-2 minutes. 2. Transfer the cell suspension (0.8 ml) to a 15 ml/50 ml conical sterile polypropylene centrifuge tube containing 8.4 ml pre-warmed culture medium, wash vial with an additional 0.8 ml culture medium (total volume 10 ml) to collect remaining cells, and centrifuge at 201 x g (rcf) for 5 minutes at room temperature. 10 ml represents minimum recommended dilution. 20 ml represents maximum recommended dilution. 3. Resuspend the cell pellet in 5 ml pre-warmed culture medium and count using a haemocytometer (Click here to view haemocytometer protocol) or alternative cell counting method. Based on cell count, seed cells in an appropriate cell culture flask at a density of 2×10^4 cells/cm². This should allow for confluency within 48 hours. Seeding density is given as a guide only and should be scaled to align with individual lab schedules. 4. Incubate the culture at 37°C incubator with 5% CO₂. Cultures should be monitored daily. <p>Subculture guidelines:</p> <p>All seeding densities should be based on cell counts gained by established methods. A guide seeding density of 2×10^4 cells/cm² is recommended for confluency (80-90% confluence) within 48 hours.</p>

A partial media change 24 hours prior to subculture may be helpful to encourage growth, if required.

Cells should be passaged when they have achieved 80-90% confluence.

[Click here to view the Mammalian cell tissue culture protocol](#)

This product is subject to limited use licenses from The Broad Institute and ERS Genomics Limited, and is developed with patented technology. For full details of the limited use licenses and relevant patents please refer to our [limited use license](#) and [patent pages](#).

Properties

Number of cells	1 x 10 ⁶ cells/vial, 1 mL
Viability	~90%
Adherent /Suspension	Adherent
Tissue	Kidney
Cell type	epithelial
STR Analysis	Amelogenin X D5S818: 8, 9 D13S317: 12, 14 D7S820: 11 D16S539: 9, 13 vWA: 16, 19 TH01: 7, 9.3 TPOX: 11 CSF1PO: 11, 12
Antibiotic resistance	Puromycin 1.00µg/ml
Mycoplasma free	Yes
Storage instructions	Shipped on Dry Ice. Store in liquid nitrogen.
Storage buffer	Constituents: 8.7% DMSO, 2% Cellulose, methyl ether

Target

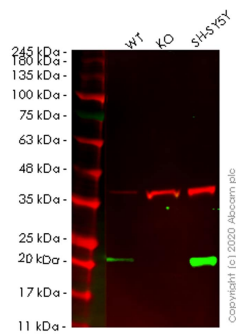
Applications

Our [Abpromise guarantee](#) covers the use of **ab266581** in the following tested applications.

The application notes include recommended starting dilutions; optimal dilutions/concentrations should be determined by the end user.

Application	Abreviews	Notes
WB		Use at an assay dependent concentration. Predicted molecular weight: 21 kDa.

Images



Western blot - Human FTH1 knockout HEK293T cell line (ab266581)

All lanes : Anti-Ferritin antibody [EPR3004Y] (ab75973) at 1/1000 dilution

Lane 1 : Wild-type HEK293T cell lysate

Lane 2 : FTH1 knockout HEK293T cell lysate

Lane 3 : SH-SY5Y cell lysate

Lysates/proteins at 20 µg per lane.

Secondary

All lanes : Goat anti-Rabbit IgG H&L (IRDye® 800CW) preadsorbed (ab216773) at 1/10000 dilution

Predicted band size: 21 kDa

Observed band size: 21 kDa

Lanes 1-3: Merged signal (red and green). Green - ab75973 observed at 21 kDa. Red - loading control ab8245 observed at 36 kDa.

ab75973 Anti-Ferritin antibody [EPR3004Y] was shown to specifically react with Ferritin in wild-type HEK293T cells. Loss of signal was observed when knockout cell line ab266581 (knockout cell lysate ab256924) was used. Wild-type and Ferritin knockout samples were subjected to SDS-PAGE. ab75973 and Anti-GAPDH antibody [6C5] - Loading Control (ab8245) were incubated at room temperature for 2.5 hours at 1 in 1000 dilution and 1 in 20000 dilution respectively. Blots were developed with Goat anti-Rabbit IgG H&L (IRDye® 800CW) preadsorbed (ab216773) and Goat anti-Mouse IgG H&L (IRDye® 680RD) preadsorbed (ab216776) secondary antibodies at 1 in 20000 dilution for 1 hour at room temperature before imaging.

Mut	GGTGGTAGTTCTGGCGCACCTGCG-----GACGCGGTCGT CATGGCGGC GACTAAGGAGA
WT	GGTGGTAGTTCTGGCGCACCTGCGAGGTGGACGCGGTCGT CATGGCGGC GACTAAGGAGA

Sanger Sequencing - Human FTH1 knockout
HEK293T cell line (ab266581)

Homozygous: 5 bp deletion in exon 1

Please note: All products are "FOR RESEARCH USE ONLY. NOT FOR USE IN DIAGNOSTIC PROCEDURES"

Our Abpromise to you: Quality guaranteed and expert technical support

- Replacement or refund for products not performing as stated on the datasheet
- Valid for 12 months from date of delivery
- Response to your inquiry within 24 hours
- We provide support in Chinese, English, French, German, Japanese and Spanish
- Extensive multi-media technical resources to help you
- We investigate all quality concerns to ensure our products perform to the highest standards

If the product does not perform as described on this datasheet, we will offer a refund or replacement. For full details of the Abpromise, please visit <https://www.abcam.com/abpromise> or contact our technical team.

Terms and conditions

- Guarantee only valid for products bought direct from Abcam or one of our authorized distributors