

Product datasheet

Human Galanin ELISA Kit ab270888

Recombinant **SimpleStep ELISA**

[4 Images](#)

Overview

Product name Human Galanin ELISA Kit

Detection method Colorimetric

Precision

Intra-assay

Sample	n	Mean	SD	CV%
Extract	3			4.6%

Inter-assay

Sample	n	Mean	SD	CV%
Extract	8			7.6%

Sample type Cell Lysate

Assay type Sandwich (quantitative)

Sensitivity 1.4 pg/ml

Range 4.69 pg/ml - 300 pg/ml

Recovery

Sample specific recovery

Sample type	Average %	Range
Cell Lysate	93	% - %

Assay time 1h 30m

Assay duration One step assay

Species reactivity **Reacts with:** Human

Product overview

Human Galanin ELISA kit (ab270888) is a single-wash 90 min sandwich ELISA designed for the quantitative measurement of Galanin protein in human cell extract samples. It uses our proprietary SimpleStep ELISA® technology. Quantitate human Galanin with 1.4 pg/mL sensitivity.

SimpleStep ELISA® technology employs capture antibodies conjugated to an affinity tag that is recognized by the monoclonal antibody used to coat our SimpleStep ELISA® plates. This

approach to sandwich ELISA allows the formation of the antibody-analyte sandwich complex in a single step, significantly reducing assay time. See the SimpleStep ELISA® protocol summary in the image section for further details. Our SimpleStep ELISA® technology provides several benefits:

- Single-wash protocol reduces assay time to 90 minutes or less
- High sensitivity, specificity and reproducibility from superior antibodies
- Fully validated in biological samples
- 96-wells plate breakable into 12 x 8 wells strips

A 384-well SimpleStep ELISA® microplate ([ab203359](#)) is available to use as an alternative to the 96-well microplate provided with SimpleStep ELISA® kits.

Notes

Galanin is a neuropeptide and a key modulator of blood pressure, mood, hunger, and sleep cycle. Recent evidence suggests that Galanin plays a role in the onset of Alzheimer's, as well as the development of eating disorders and some types of cancer. The antibodies in this kit were raised against the mature, cleaved, hormone. Galanin protein is homologous throughout Mammalia, and as such cross-reactivity is expected with other species.

Abcam has not and does not intend to apply for the REACH Authorisation of customers' uses of products that contain European Authorisation list (Annex XIV) substances.

It is the responsibility of our customers to check the necessity of application of REACH Authorisation, and any other relevant authorisations, for their intended uses.

Platform

Pre-coated microplate (12 x 8 well strips)

Properties

Storage instructions Store at +4°C. Please refer to protocols.

Components	1 x 96 tests
10X Human Galanin Capture Antibody	1 x 600µl
10X Human Galanin Detector Antibody	1 x 600µl
10X Wash Buffer PT (ab206977)	1 x 20ml
50X Cell Extraction Enhancer Solution (ab193971)	1 x 1ml
5X Cell Extraction Buffer PTR (ab193970)	1 x 10ml
Antibody Diluent CPI - HAMA Blocker (ab193969)	1 x 6ml
Human Galanin Lyophilized Peptide Protein	2 vials
Plate Seals	1 unit
Sample Diluent NS (ab193972)	1 x 12ml
SimpleStep Pre-Coated 96-Well Microplate (ab206978)	1 unit

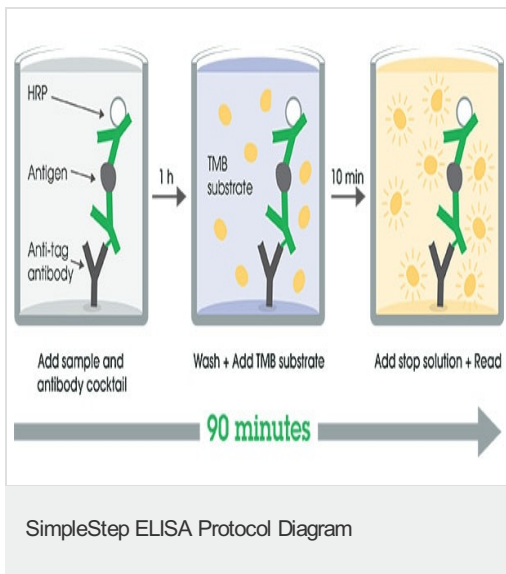
Components	1 x 96 tests
Stop Solution	1 x 12ml
TMB Development Solution	1 x 12ml

Function Contracts smooth muscle of the gastrointestinal and genitourinary tract, regulates growth hormone release, modulates insulin release, and may be involved in the control of adrenal secretion.

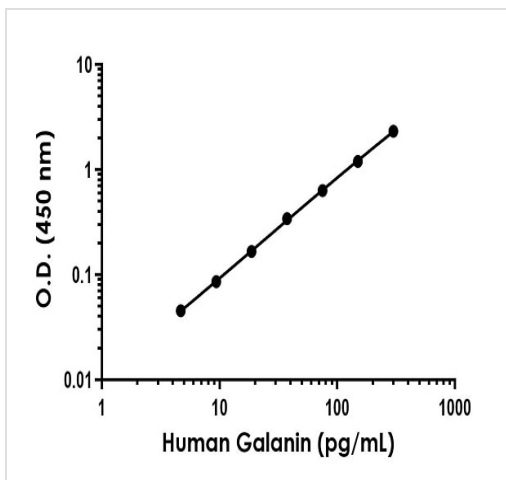
Sequence similarities Belongs to the galanin family.

Cellular localization Secreted.

Images

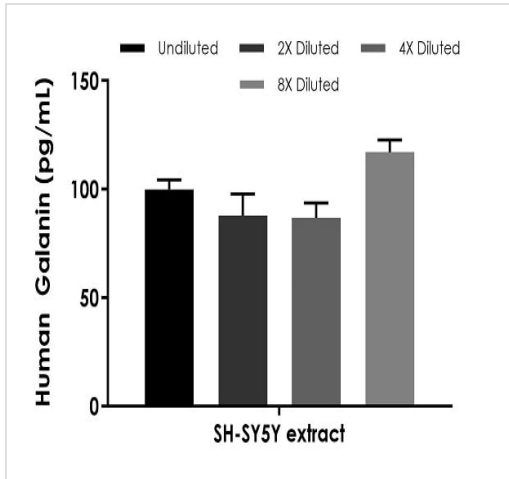


SimpleStep ELISA technology allows the formation of the antibody-antigen complex in one single step, reducing assay time to 90 minutes. Add samples or standards and antibody mix to wells all at once, incubate, wash, and add your final substrate. See protocol for a detailed step-by-step guide.



The Galanin standard curve was prepared as described in Section 10. Raw data values are shown in the table. Background-subtracted data values (mean +/- SD) are graphed.

Example of human Galanin standard curve in Sample Diluent NS + 1X Enhancer.



Interpolated concentrations of native Galanin in human SHSY-5Y cell extract based on a 250 µg/mL extract load.

The concentrations of Galanin were measured in duplicate and interpolated from the Galanin standard curve and corrected for sample dilution. The interpolated dilution factor corrected values are plotted (mean +/- SD, n=2). The mean Galanin concentration was determined to be X xg/mL in SHSY-5Y cell extract.

Powered by recombinant antibodies

<p>Research with confidence Consistent and reproducible results</p>	<p>Long-term and scalable supply Recombinant technology</p>
<p>Success from the first experiment Confirmed specificity</p>	<p>Ethical standards compliant Animal-free production</p>

Sandwich ELISA - Human Galanin ELISA Kit (ab270888)

To learn more about the advantages of recombinant antibodies see [here](#).

Please note: All products are "FOR RESEARCH USE ONLY. NOT FOR USE IN DIAGNOSTIC PROCEDURES"

Our Abpromise to you: Quality guaranteed and expert technical support

- Replacement or refund for products not performing as stated on the datasheet
- Valid for 12 months from date of delivery
- Response to your inquiry within 24 hours
- We provide support in Chinese, English, French, German, Japanese and Spanish
- Extensive multi-media technical resources to help you
- We investigate all quality concerns to ensure our products perform to the highest standards

If the product does not perform as described on this datasheet, we will offer a refund or replacement. For full details of the Abpromise, please visit <https://www.abcam.com/abpromise> or contact our technical team.

Terms and conditions

- Guarantee only valid for products bought direct from Abcam or one of our authorized distributors