

Product datasheet

Human Hemopexin ELISA Kit (HPX) ab108859

★★★★★ 3 Abreviews 3 References 2 Images

Overview

Product name Human Hemopexin ELISA Kit (HPX)

Detection method Colorimetric

Precision Intra-assay

Sample	n	Mean	SD	CV%
Overall				7.5%

Inter-assay

Sample	n	Mean	SD	CV%
Overall				10.5%

Sample type Milk, Serum, Plasma

Assay type Competitive

Sensitivity > 0.7 µg/ml

Range 0.078 µg/ml - 5 µg/ml

Recovery 102 %

Assay time 2h 00m

Assay duration Multiple steps standard assay

Species reactivity **Reacts with:** Human

Product overview Abcam's Hemopexin (HPX) Human *in vitro* competitive ELISA (Enzyme-Linked Immunosorbent Assay) kit is designed for the quantitative measurement of hemopexin levels in plasma and serum.

A Hemopexin specific antibody has been precoated onto 96-well plates and blocked. Standards or test samples are added to the wells and subsequently biotinylated Hemopexin is added and then followed by washing with wash buffer. Streptavidin-Peroxidase Complex is added and unbound conjugates are washed away with wash buffer. TMB is then used to visualize Streptavidin-Peroxidase enzymatic reaction. TMB is catalyzed by Streptavidin-Peroxidase to produce a blue color product that changes into yellow after adding acidic stop solution. The density of yellow coloration is inversely proportional to the amount of Hemopexin captured in plate.

Get results in 90 minutes with Human Hemopexin ELISA Kit ([ab171576](#)) from our SimpleStep ELISA® range.

The entire kit may be stored at -20°C for long term storage before reconstitution - Avoid repeated freeze-thaw cycles.

Platform Microplate

Properties

Storage instructions Store at -20°C. Please refer to protocols.

Components	1 x 96 tests
100X Streptavidin-Peroxidase Conjugate	1 x 80µl
10X Diluent N Concentrate	1 x 30ml
20X Wash Buffer Concentrate	1 x 30ml
1X Biotinylated Human Hemopexin (Lyophilized)	1 vial
Chromogen Substrate	1 x 8ml
Hemopexin Microplate (12 x 8 well strips)	1 unit
Hemopexin Standard	1 vial
Sealing Tapes	3 units
Stop Solution	1 x 12ml

Function Binds heme and transports it to the liver for breakdown and iron recovery, after which the free hemopexin returns to the circulation.

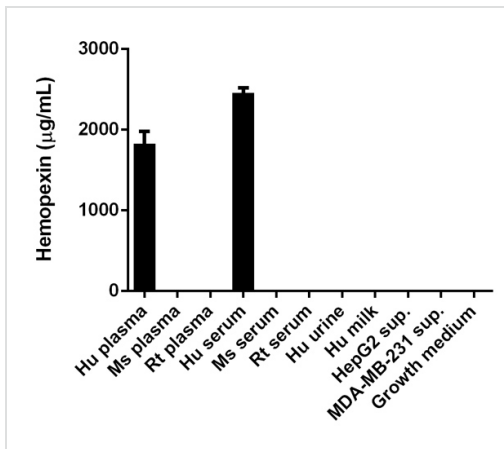
Tissue specificity Expressed by the liver and secreted in plasma.

Sequence similarities Belongs to the hemopexin family.
Contains 5 hemopexin-like domains.

Post-translational modifications N- and O-glycosylated. O-glycosylated with core 1 or possibly core 8 glycans.

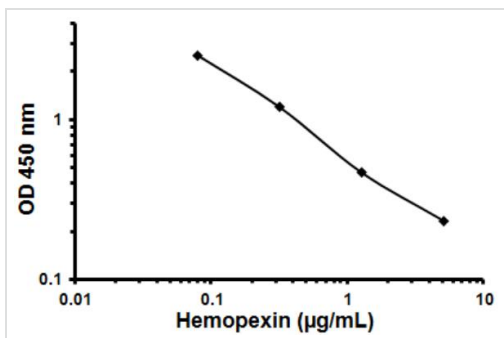
Cellular localization Secreted.

Images



Hemopexin measured in various biological fluids showing quantity (µg) per mL of tested sample

Competitive ELISA - Hemopexin (ab108859)



Representative Standard Curve using ab108859.

Typical Standard Curve

Please note: All products are "FOR RESEARCH USE ONLY. NOT FOR USE IN DIAGNOSTIC PROCEDURES"

Our Abpromise to you: Quality guaranteed and expert technical support

- Replacement or refund for products not performing as stated on the datasheet
- Valid for 12 months from date of delivery
- Response to your inquiry within 24 hours
- We provide support in Chinese, English, French, German, Japanese and Spanish
- Extensive multi-media technical resources to help you
- We investigate all quality concerns to ensure our products perform to the highest standards

If the product does not perform as described on this datasheet, we will offer a refund or replacement. For full details of the Abpromise, please visit <https://www.abcam.com/abpromise> or contact our technical team.

Terms and conditions

- Guarantee only valid for products bought direct from Abcam or one of our authorized distributors