

Properties

Storage instructions Store at -80°C. Please refer to protocols.

Components	1 kit
ab260246 - Human HINT1 knockout HeLa cell lysate (Lyophilized)	1 x 100µg
ab255929 - Human Wild Type HeLa cell lysate (Lyophilized)	1 x 100µg

Cell type epithelial
Disease Adenocarcinoma
Gender Female
STR Analysis Amelogenin X D5S818: 11, 12 D13S317: 12, 13.3 D7S820: 8, 12 D16S539: 9, 10 vWA: 16, 18 TH01: 7 TPOX: 8, 12 CSF1PO: 9, 10

Target

Function Hydrolyzes adenosine 5'-monophosphoramidate substrates such as AMP-morpholidate, AMP-N-alanine methyl ester, AMP-alpha-acetyl lysine methyl ester and AMP-NH₂.
Tissue specificity Widely expressed.
Sequence similarities Belongs to the HINT family.
Contains 1 HIT domain.
Domain The histidine triad, also called HIT motif, forms part of the binding loop for the alpha-phosphate of purine mononucleotide.
Cellular localization Cytoplasm. Nucleus. Interaction with CDK7 leads to a more nuclear localization.

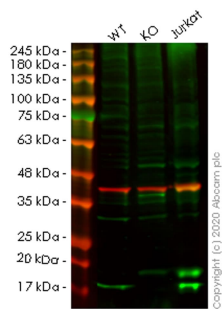
Applications

Our [Abpromise guarantee](#) covers the use of **ab257465** in the following tested applications.

The application notes include recommended starting dilutions; optimal dilutions/concentrations should be determined by the end user.

Application	Abreviews	Notes
WB		Use at an assay dependent concentration. Predicted molecular weight: 14 kDa.

Images



Western blot - Human HINT1 knockout HeLa cell lysate (ab257465)

Lane 1: Wild-type HeLa cell lysate (20 ug)

Lane 2: HINT1 knockout HeLa cell lysate (20 ug)

Lane 3: Jurkat cell lysate (20 ug)

ab124912 was shown to specifically react with HINT1 in wild-type HeLa cells. Loss of signal was observed when knockout cell line ab265776 (knockout cell lysate ab257465) was used. Wild-type and HINT1 knockout samples were subjected to SDS-PAGE. ab124912 and Anti-GAPDH antibody [6C5] - Loading Control (ab8245) were incubated at room temperature for 2.5 hours at 1 in 500 dilution and 1 in 20000 dilution respectively. Blots were developed with Goat anti-Rabbit IgG H&L (IRDye® 800CW) preadsorbed (ab216773) and Goat anti-Mouse IgG H&L (IRDye® 680RD) preadsorbed (ab216776) secondary antibodies at 1 in 20000 dilution for 1 hour at room temperature before imaging.

Mut	GGAGAGAGGCCCGAGATGGCAGATGAGATTCCAAAGGCTCAGGTCGCTCGGCCTGGTGGCG
WT	GGAGAGAGGCCCGAGATGGCAGATGAGATTGCCAAAGGCTCAGGTCGCTCGGCCTGGTGGCG

Homozygous: 1 bp deletion in exon 1

Sanger Sequencing - Human HINT1 knockout HeLa cell lysate (ab257465)

Please note: All products are "FOR RESEARCH USE ONLY. NOT FOR USE IN DIAGNOSTIC PROCEDURES"

Our Abpromise to you: Quality guaranteed and expert technical support

- Replacement or refund for products not performing as stated on the datasheet
- Valid for 12 months from date of delivery
- Response to your inquiry within 24 hours
- We provide support in Chinese, English, French, German, Japanese and Spanish
- Extensive multi-media technical resources to help you
- We investigate all quality concerns to ensure our products perform to the highest standards

If the product does not perform as described on this datasheet, we will offer a refund or replacement. For full details of the Abpromise, please visit <https://www.abcam.com/abpromise> or contact our technical team.

Terms and conditions

- Guarantee only valid for products bought direct from Abcam or one of our authorized distributors