

Product datasheet

Human HLA-E (HLA E) knockout HEK-293T cell pellet  
ab278919

4 Images

Overview

<b>Product name</b>	Human HLA-E (HLA E) knockout HEK-293T cell pellet
<b>Product overview</b>	<p>Abcam's knockout cell pellets give you access to native proteins, without the need to culture cells. Our knockout cell pellets are prepared from our single-gene knockout cell lines and provide an additional offering to our cell lysates.</p> <p>Cells are snap-frozen to provide high quality pellets that are suitable for extraction with alternative lysis buffers or for preparation of lysates from subcellular fractions. Our knockout cell pellets are suitable for a variety of applications, including PCR, gene expression profiling and DNA library preparation.</p>
<b>Parental Cell Line</b>	HEK293T
<b>Organism</b>	Human
<b>Mutation description</b>	Knockout achieved by using CRISPR/Cas9, 1 bp deletion in exon3 and 1 bp insertion in exon3 and 8 bp deletion in exon3.
<b>Passage number</b>	<20
<b>Knockout validation</b>	Sanger Sequencing, Western Blot (WB)
<b>Notes</b>	<p><b>Pellet size:</b> 5 million cells/vial.</p> <p>This product is subject to limited use licenses from The Broad Institute, ERS Genomics Limited and Sigma-Aldrich Co. LLC, and is developed with patented technology. For full details of the licenses and patents please refer to our <a href="#">limited use license</a> and <a href="#">patent pages</a>.</p>
<b>Tested applications</b>	<b>Suitable for:</b> WB

Properties

**Storage instructions** Store at -80°C. Please refer to protocols.

Components	1 kit
Human HLA-E knockout HEK293T cell pellet	1 vial
ab286211 - Human wild-type HEK293T cell pellet	1 vial

**Cell type** epithelial

**STR Analysis** Amelogenin X D5S818: 8, 9 D13S317: 12, 14 D7S820: 11 D16S539: 9, 13 vWA: 16, 19 TH01: 7, 9.3 TPOX: 11 CSF1PO: 11, 12

**Target**

**Relevance** HLA E belongs to the HLA class I heavy chain paralogues. This class I molecule is a heterodimer consisting of a heavy chain and a light chain (beta-2 microglobulin). The heavy chain is anchored in the membrane. HLA E binds a restricted subset of peptides derived from the leader peptides of other class I molecules.

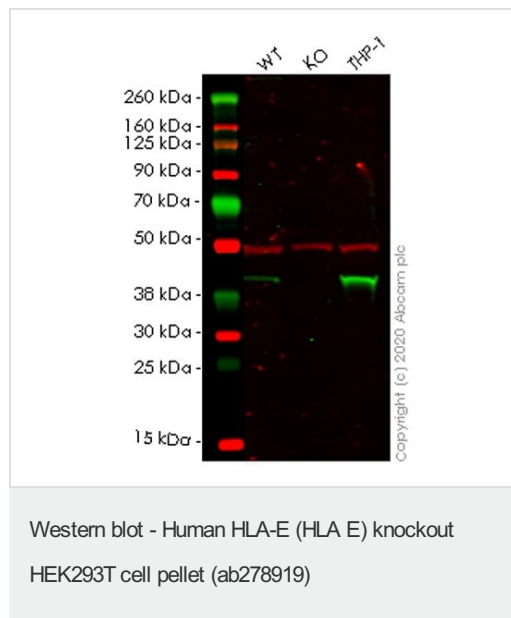
**Cellular localization** Membrane; Single-pass type I membrane protein

**Applications**

**The Abpromise guarantee** Our [Abpromise guarantee](#) covers the use of ab278919 in the following tested applications. The application notes include recommended starting dilutions; optimal dilutions/concentrations should be determined by the end user.

Application	Abreviews	Notes
WB		Use at an assay dependent concentration. Predicted molecular weight: 40 kDa.

**Images**



**Lane 1:** Wild-type HEK293T cell lysate (20 ug)

**Lane 2:** HLA-E knockout HEK293T cell lysate (20 ug)

**Lane 3:** THP-1 cell lysate (20 ug)

ab2216 was shown to specifically react with HLA E in wild-type HEK293T cells. Loss of signal was observed when knockout cell line ab267231 (knockout cell lysate ab258454) was used. Wild-type and HLA E knockout samples were subjected to SDS-PAGE. ab2216 and Anti-beta Tubulin [EP1331Y] - Microtubule Marker (ab52901) were incubated overnight at 4°C at 1 in 500 dilution and 1 in 20000 dilution respectively. Blots were developed with Goat anti-Rabbit IgG H&L (IRDye® 680RD) preadsorbed (ab216777) and Goat anti-Mouse IgG H&L (IRDye® 800CW) preadsorbed (ab216772) secondary antibodies at 1 in 20000 dilution for 1 hour at room temperature before imaging.

```

Mut  TATTTGGAGCCACTCCAC-----CTTCCAGTAGGCTCTCTGGTGCTCCGCCTCA
      |||
WT   TATTTGGAGCCACTCCACGCATGTGTCTTCCAGTAGGCTCTCTGGTGCTCCGCCTCA

```

Allele-1: 8 bp deletion in exon3

Sanger Sequencing - Human HLA-E (HLA E)  
knockout HEK293T cell pellet (ab278919)

```

Mut  TATTTGGAGCCACTCCAC-CATGTGTCTTCCAGTAGGCTCTCTGGTGCTCCGCCTCA
      |||
WT   TATTTGGAGCCACTCCACGCATGTGTCTTCCAGTAGGCTCTCTGGTGCTCCGCCTCA

```

Allele-2: 1 bp deletion in exon3

Sanger Sequencing - Human HLA-E (HLA E)  
knockout HEK293T cell pellet (ab278919)

```

Mut  TATTTGGAGCCACTCCACCGCATGTGTCTTCCAGTAGGCTCTCTGGTGCTCCGCCTC
      |||
WT   TATTTGGAGCCACTCCAC  GCATGTGTCTTCCAGTAGGCTCTCTGGTGCTCCGCCTC

```

Allele-3: 1 bp insertion in exon3

Sanger Sequencing - Human HLA-E (HLA E)  
knockout HEK293T cell pellet (ab278919)

**Please note:** All products are "FOR RESEARCH USE ONLY. NOT FOR USE IN DIAGNOSTIC PROCEDURES"

### Our Abpromise to you: Quality guaranteed and expert technical support

- Replacement or refund for products not performing as stated on the datasheet
- Valid for 12 months from date of delivery
- Response to your inquiry within 24 hours
- We provide support in Chinese, English, French, German, Japanese and Spanish
- Extensive multi-media technical resources to help you
- We investigate all quality concerns to ensure our products perform to the highest standards

If the product does not perform as described on this datasheet, we will offer a refund or replacement. For full details of the Abpromise, please visit <https://www.abcam.com/abpromise> or contact our technical team.

### Terms and conditions

- Guarantee only valid for products bought direct from Abcam or one of our authorized distributors