

## Product datasheet

# Human IGFBP1 ELISA Kit ab100539

★★★★★ 1 Abreviews 8 References 4 Images

### Overview

<b>Product name</b>	Human IGFBP1 ELISA Kit
<b>Detection method</b>	Colorimetric
<b>Sample type</b>	Cell culture supernatant, Serum, Plasma, Cell Lysate
<b>Assay type</b>	Sandwich (quantitative)
<b>Sensitivity</b>	< 5 pg/ml
<b>Range</b>	2.74 pg/ml - 2000 pg/ml
<b>Recovery</b>	> 92 %

Sample specific recovery

Sample type	Average %	Range
Cell culture supernatant	94.64	83% - 102%
Serum	95.27	84% - 104%
Plasma	92.47	82% - 102%

**Assay duration** Multiple steps standard assay

**Species reactivity** **Reacts with:** Human

**Product overview** Abcam's IGFBP1 Human ELISA (Enzyme-Linked Immunosorbent Assay) kit is an *in vitro* enzyme-linked immunosorbent assay for the quantitative measurement of Human IGFBP1 in serum, plasma and cell culture supernatants.

This assay employs an antibody specific for Human IGFBP1 coated on a 96-well plate. Standards and samples are pipetted into the wells and IGFBP1 present in a sample is bound to the wells by the immobilized antibody. The wells are washed and biotinylated anti-Human IGFBP1 antibody is added. After washing away unbound biotinylated antibody, HRP-conjugated streptavidin is pipetted to the wells. The wells are again washed, a TMB substrate solution is added to the wells and color develops in proportion to the amount of IGFBP1 bound. The Stop Solution changes the color from blue to yellow, and the intensity of the color is measured at 450 nm.

**Notes** Optimization may be required with urine samples

**Tested applications** **Suitable for:** Sandwich ELISA

**Platform** Microplate

## Properties

**Storage instructions** Store at -20°C. Please refer to protocols.

Components	1 x 96 tests
20X Wash Buffer Concentrate	1 x 25ml
240X HRP-Streptavidin Concentrate	1 x 200µl
5X Assay Diluent B	1 x 15ml
Assay Diluent A	1 x 30ml
Biotinylated anti-Human IGFBP1 (lyophilized)	2 vials
IGFBP1 Microplate (12 x 8 wells)	1 unit
Recombinant Human IGFBP1 Standard (lyophilized)	2 vials
Stop Solution	1 x 8ml
TMB One-Step Substrate Reagent	1 x 12ml

## Relevance

Insulin like growth factor binding protein 1 (IGFBP1) is a member of the superfamily of insulin like growth factor (IGF) binding proteins which include six high affinity IGF binding proteins (IGFBP) and at least four low affinity binding proteins referred to as IGFBP related proteins (IGFBPrP). The IGFBP members are cysteine rich proteins with conserved cysteine residues clustered in the amino terminal and the carboxy terminal regions of the molecule. The N terminal and C terminal regions are highly homologous among rat, human and bovine sequences. Contained within IGFBP1 and 2 is an integrin receptor recognition sequence (RGD) that is responsible for promoting cell migration by an IGF independent action. IGFBPs hold a central position in IGF ligand receptor interactions through influences on both the bioavailability and distribution of IGFs in the extracellular environment. IGFBPs will either inhibit or enhance the biological activities of IGF or act in an IGF independent manner.

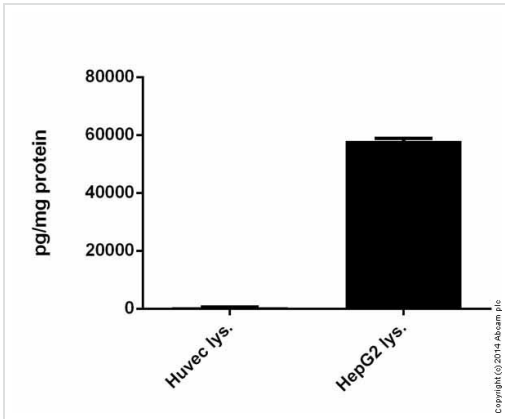
## Applications

Our [Abpromise guarantee](#) covers the use of **ab100539** in the following tested applications.

The application notes include recommended starting dilutions; optimal dilutions/concentrations should be determined by the end user.

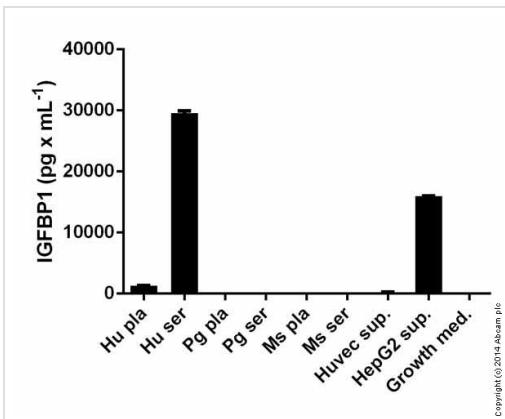
Application	Abreviews	Notes
Sandwich ELISA		Use at an assay dependent concentration.

## Images



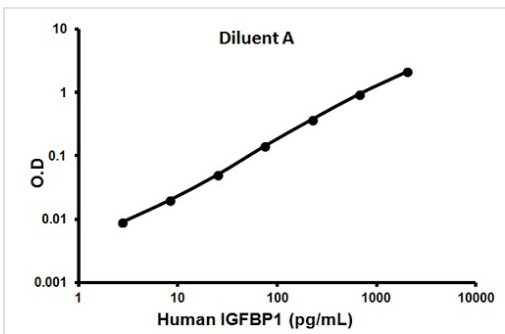
IGFBP1 measured in cell lysates showing quantity (pg) per mg of protein

ab100539 IGFBP1 Human ELISA Kit



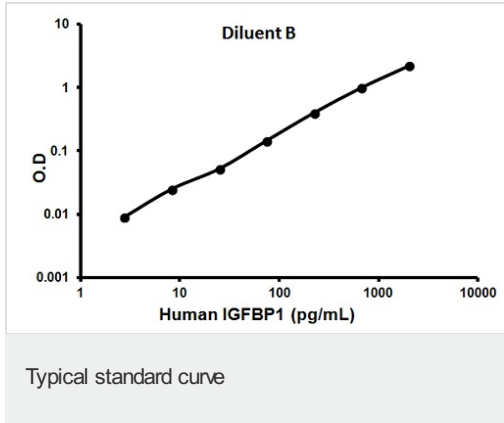
IGFBP1 measured in biological fluids showing quantity (pg) per mL of tested sample

ab100539 IGFBP1 Human ELISA Kit



Representative standard curve using ab100539

Typical standard curve



Representative standard curve using ab100539

**Please note:** All products are "FOR RESEARCH USE ONLY. NOT FOR USE IN DIAGNOSTIC PROCEDURES"

### Our Abpromise to you: Quality guaranteed and expert technical support

---

- Replacement or refund for products not performing as stated on the datasheet
- Valid for 12 months from date of delivery
- Response to your inquiry within 24 hours
- We provide support in Chinese, English, French, German, Japanese and Spanish
- Extensive multi-media technical resources to help you
- We investigate all quality concerns to ensure our products perform to the highest standards

If the product does not perform as described on this datasheet, we will offer a refund or replacement. For full details of the Abpromise, please visit <https://www.abcam.com/abpromise> or contact our technical team.

### Terms and conditions

---

- Guarantee only valid for products bought direct from Abcam or one of our authorized distributors