

Product datasheet

Anti-Human IgG Lambda Light Chain antibody [RM127] ab195573

Recombinant

2 Images

Overview

| | |
|----------------------------|--|
| Product name | Anti-Human IgG Lambda Light Chain antibody [RM127] |
| Description | Rabbit monoclonal [RM127] to Human IgG Lambda Light Chain |
| Host species | Rabbit |
| Tested applications | Suitable for: IHC-P |
| Species reactivity | Reacts with: Human |
| Immunogen | Full length native protein (purified) corresponding to Human Human IgG Lambda Light Chain. Human IgG purified from Human plasma. |
| Positive control | Human tonsil tissue. |

Properties

| | |
|-----------------------------|---|
| Form | Liquid |
| Storage instructions | Shipped at 4°C. Store at +4°C short term (1-2 weeks). Upon delivery aliquot. Store at -20°C long term. Avoid freeze / thaw cycle. |
| Storage buffer | Preservative: 0.09% Sodium azide Constituents: 1% BSA, 48% PBS, 50% Glycerol (glycerin, glycerine) |
| Purity | Protein A purified |
| Purification notes | ab195573 was purified from an animal origin-free culture supernatant. |
| Clonality | Monoclonal |
| Clone number | RM127 |
| Isotype | IgG |

Applications

The Abpromise guarantee Our [Abpromise guarantee](#) covers the use of ab195573 in the following tested applications. The application notes include recommended starting dilutions; optimal dilutions/concentrations should be determined by the end user.

| Application | Abreviews | Notes |
|-------------|-----------|---------------------------------------|
| IHC-P | | Use a concentration of 0.5 - 2 µg/ml. |

Target

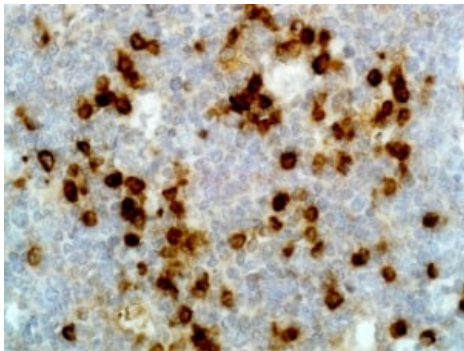
Relevance

All five immunoglobulin classes share the same basic four polypeptide chain structure of two heavy-chains and two light chains. There are five heavy chain types, and two light-chain types (Kappa and Lambda) both having a molecular weight of 22.5kDa. Any heavy-chain type can associate with either light-chain type, but on any immunoglobulin molecule both light-chains are of the same type. Kappa and Lambda consist of a variable region and a constant region and can easily be differentiated by the antigenic properties of the constant region. The ratio of Kappa to Lambda is 70:30, the vast majority of which is bound to heavy-chain in immunoglobulin. In normal individuals low levels of free light-chain are present in serum (kappa, 1.6-15.2 mg/L; Lambda, 0.4-4.2mg/L), with the occurrence of multiple myeloma or other B-cell malignancies these levels can be greatly elevated and can be found at high levels in the urine (Bence-Jones proteins).

Cellular localization

Cytoplasmic

Images



Immunohistochemical analysis of Human tonsil tissue labeling Human IgG Lambda Light Chain with ab195573 at 2 µg/ml.

Immunohistochemistry (Formalin/PFA-fixed paraffin-embedded sections) - Anti-Human IgG Lambda Light Chain antibody [RM127] (ab195573)

Why choose a recombinant antibody?



Research with confidence
Consistent and reproducible results



Long-term and scalable supply
Recombinant technology



Success from the first experiment
Confirmed specificity



Ethical standards compliant
Animal-free production

Anti-Human IgG Lambda Light Chain antibody
[RM127] (ab195573)

Please note: All products are "FOR RESEARCH USE ONLY. NOT FOR USE IN DIAGNOSTIC PROCEDURES"

Our Abpromise to you: Quality guaranteed and expert technical support

- Replacement or refund for products not performing as stated on the datasheet
- Valid for 12 months from date of delivery
- Response to your inquiry within 24 hours
- We provide support in Chinese, English, French, German, Japanese and Spanish
- Extensive multi-media technical resources to help you
- We investigate all quality concerns to ensure our products perform to the highest standards

If the product does not perform as described on this datasheet, we will offer a refund or replacement. For full details of the Abpromise, please visit <https://www.abcam.com/abpromise> or contact our technical team.

Terms and conditions

- Guarantee only valid for products bought direct from Abcam or one of our authorized distributors