

## Product datasheet

# Human Leptin ELISA Kit [ab100581](#)

★★★★★ 2 Abreviews 1 References 4 Images

### Overview

<b>Product name</b>	Human Leptin ELISA Kit
<b>Detection method</b>	Colorimetric
<b>Sample type</b>	Cell culture supernatant, Serum, Plasma
<b>Assay type</b>	Sandwich (quantitative)
<b>Sensitivity</b>	< 2 pg/ml
<b>Range</b>	1.64 pg/ml - 400 pg/ml
<b>Recovery</b>	94 %

Sample specific recovery

Sample type	Average %	Range
Cell culture supernatant	95.42	84% - 104%
Serum	94.49	83% - 103%
Plasma	93.85	82% - 102%

**Assay duration** Multiple steps standard assay

**Species reactivity** **Reacts with:** Human

**Product overview** Human Leptin ELISA kit is designed for the quantitative measurement of Human Leptin in serum, plasma, and cell culture supernatants.

This assay employs an antibody specific for Human Leptin coated on a 96-well plate. Standards and samples are pipetted into the wells and Leptin present in a sample is bound to the wells by the immobilized antibody. The wells are washed and biotinylated anti-Human Leptin antibody is added. After washing away unbound biotinylated antibody, HRP-conjugated streptavidin is pipetted to the wells. The wells are again washed, a TMB substrate solution is added to the wells and color develops in proportion to the amount of Leptin bound. The Stop Solution changes the color from blue to yellow, and the intensity of the color is measured at 450 nm.

Get results in 90 minutes with Human Leptin ELISA Kit ([ab179884](#)) from our SimpleStep ELISA® range.

**Notes** Optimization may be required with urine samples.

**Tested applications**                      **Suitable for:** Sandwich ELISA

**Platform**                                      Microplate

## Properties

**Storage instructions**                      Store at -20°C. Please refer to protocols.

Components	1 x 96 tests
160X HRP-Streptavidin Concentrate	1 x 200µl
20X Wash Buffer Concentrate	1 x 25ml
5X Assay Diluent B	1 x 15ml
Assay Diluent A	1 x 30ml
Biotinylated anti-Human Leptin (lyophilized)	2 vials
Leptin Microplate (12 strips x 8 wells)	1 unit
Recombinant Human Leptin Standard (lyophilized)	2 vials
Stop Solution	1 x 8ml
TMB One-Step Substrate Reagent	1 x 12ml

**Function**                                      May function as part of a signaling pathway that acts to regulate the size of the body fat depot. An increase in the level of LEP may act directly or indirectly on the CNS to inhibit food intake and/or regulate energy expenditure as part of a homeostatic mechanism to maintain constancy of the adipose mass.

**Involvement in disease**                      Defects in LEP may be a cause of obesity (OBESITY) [MIM:601665]. It is a condition characterized by an increase of body weight beyond the limitation of skeletal and physical requirements, as the result of excessive accumulation of body fat.

**Sequence similarities**                      Belongs to the leptin family.

**Cellular localization**                      Secreted.

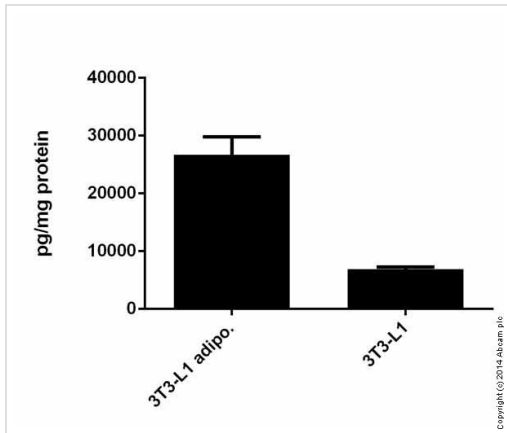
## Applications

Our [Abpromise guarantee](#) covers the use of **ab100581** in the following tested applications.

The application notes include recommended starting dilutions; optimal dilutions/concentrations should be determined by the end user.

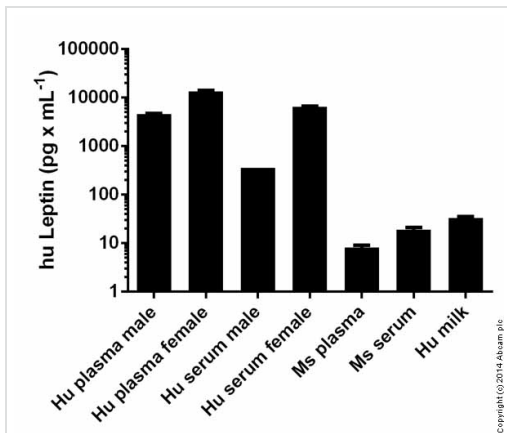
Application	Abreviews	Notes
Sandwich ELISA		Use at an assay dependent concentration.

## Images



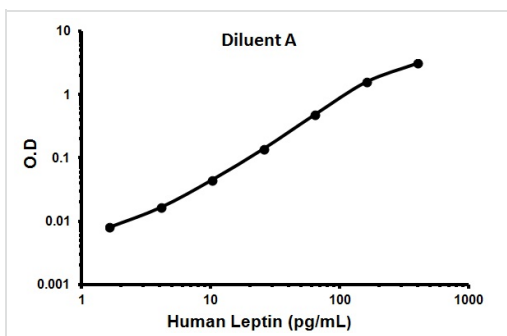
Leptin measured in cell lysates showing quantity (pg) per mg of protein

ab100581 Leptin Human ELISA Kit



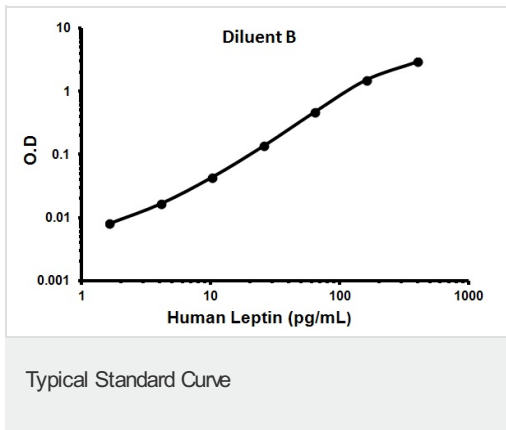
Leptin measured in biological fluids showing quantity (pg) per mL of tested sample

ab100581 Leptin Human ELISA Kit



Representative Standard Curve using ab100581.

Typical Standard Curve



Representative Standard Curve using ab100581.

**Please note:** All products are "FOR RESEARCH USE ONLY. NOT FOR USE IN DIAGNOSTIC PROCEDURES"

### Our Abpromise to you: Quality guaranteed and expert technical support

---

- Replacement or refund for products not performing as stated on the datasheet
- Valid for 12 months from date of delivery
- Response to your inquiry within 24 hours
- We provide support in Chinese, English, French, German, Japanese and Spanish
- Extensive multi-media technical resources to help you
- We investigate all quality concerns to ensure our products perform to the highest standards

If the product does not perform as described on this datasheet, we will offer a refund or replacement. For full details of the Abpromise, please visit <https://www.abcam.com/abpromise> or contact our technical team.

### Terms and conditions

---

- Guarantee only valid for products bought direct from Abcam or one of our authorized distributors