

Product datasheet

Human Lysozyme ELISA Kit (LZM) ab108880

[3 References](#) [2 Images](#)

Overview

Product name Human Lysozyme ELISA Kit (LZM)

Detection method Colorimetric

Precision

Intra-assay

Sample	n	Mean	SD	CV%
--------	---	------	----	-----

Overall 5%

Inter-assay

Sample	n	Mean	SD	CV%
--------	---	------	----	-----

Overall 7.1%

Sample type Cell culture supernatant, Saliva, Milk, Urine, Serum, Plasma, Other biological fluids, Cerebral Spinal Fluid

Assay type Sandwich (quantitative)

Sensitivity = 0.15 ng/ml

Range 0.156 ng/ml - 5 ng/ml

Recovery = 97.5 %

Assay time 4h 00m

Assay duration Multiple steps standard assay

Species reactivity **Reacts with:** Human

Product overview

Human Lysozyme (LZM) *in vitro* ELISA (Enzyme-Linked Immunosorbent Assay) kit is designed for the quantitative measurement of human Lysozyme in plasma, serum, urine, saliva, CSF and cell culture supernatants.

A Lysozyme specific antibody has been precoated onto 96-well plates and blocked. Standards or test samples are added to the wells and subsequently a Lysozyme specific biotinylated detection antibody is added and then followed by washing with wash buffer. Streptavidin-Peroxidase Conjugate is added and unbound conjugates are washed away with wash buffer. TMB is then used to visualize Streptavidin-Peroxidase enzymatic reaction. TMB is catalyzed by Streptavidin-Peroxidase to produce a blue color product that changes into yellow after adding acidic stop

solution. The density of yellow coloration is directly proportional to the amount of Lysozyme captured in plate.

The entire kit may be stored at -20°C for long term storage before reconstitution - Avoid repeated freeze-thaw cycles.

Platform Microplate

Properties

Storage instructions Store at -20°C. Please refer to protocols.

Components	1 x 96 tests
100X Streptavidin-Peroxidase Conjugate	1 x 80µl
10X Diluent N Concentrate	1 x 30ml
20X Wash Buffer Concentrate	2 x 30ml
50X Biotinylated Human Lysozyme Antibody	1 x 120µl
Chromogen Substrate	1 x 8ml
Lysozyme Microplate (12 x 8 well strips)	1 unit
Lysozyme Standard	1 vial
Sealing Tapes	3 units
Stop Solution	1 x 12ml

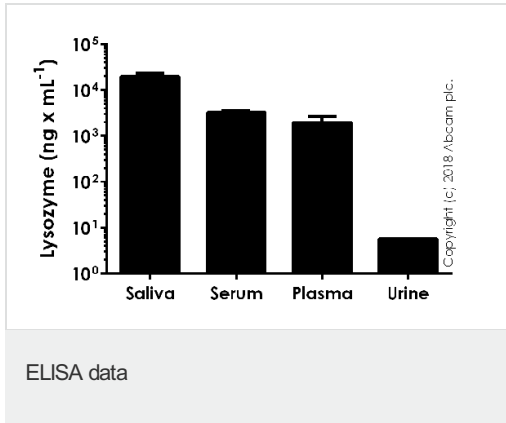
Function Lysozymes have primarily a bacteriolytic function; those in tissues and body fluids are associated with the monocyte-macrophage system and enhance the activity of immunoagents.

Involvement in disease Amyloidosis 8

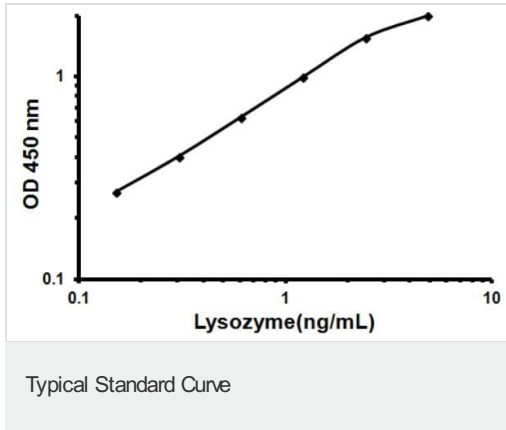
Sequence similarities Belongs to the glycosyl hydrolase 22 family.

Cellular localization Secreted.

Images



Human lysozyme measured in biological fluids showing quantity (ng) per mL of tested sample. Human serum and plasma diluted 1000-9000 fold. Human saliva diluted 8000-24000 fold. Human urine diluted 10 fold.



Representative Standard Curve using ab108880.

Please note: All products are "FOR RESEARCH USE ONLY. NOT FOR USE IN DIAGNOSTIC PROCEDURES"

Our Abpromise to you: Quality guaranteed and expert technical support

- Replacement or refund for products not performing as stated on the datasheet
- Valid for 12 months from date of delivery
- Response to your inquiry within 24 hours
- We provide support in Chinese, English, French, German, Japanese and Spanish
- Extensive multi-media technical resources to help you
- We investigate all quality concerns to ensure our products perform to the highest standards

If the product does not perform as described on this datasheet, we will offer a refund or replacement. For full details of the Abpromise, please visit <https://www.abcam.com/abpromise> or contact our technical team.

Terms and conditions

- Guarantee only valid for products bought direct from Abcam or one of our authorized distributors