

## Product datasheet

# Human PBK ELISA Kit ab184866

Recombinant SimpleStep ELISA

[6 Images](#)

### Overview

**Product name** Human PBK ELISA Kit

**Detection method** Colorimetric

**Precision**

Intra-assay

Sample	n	Mean	SD	CV%
Jurkat cells	5			2%

Inter-assay

Sample	n	Mean	SD	CV%
Jurkat cells	3			14%

**Sample type**

Cell culture extracts, Adherent cells, Suspension cells, Tissue Extracts, Cell Lysate, Tissue Homogenate

**Assay type**

Sandwich (quantitative)

**Sensitivity**

133 pg/ml

**Range**

300 pg/ml - 5000 pg/ml

**Recovery**

Sample specific recovery

Sample type	Average %	Range
Cell culture media	103	97% - 109%
Extraction Buffer	100	99% - 100%

**Assay time**

1h 30m

**Assay duration**

One step assay

**Species reactivity**

**Reacts with:** Human

**Product overview**

Human PBK (PDZ Binding Kinase) ELISA kit (ab184866) is a single-wash 90 min sandwich ELISA designed for the quantitative measurement of PBK protein in cell and tissue extracts. It uses our proprietary SimpleStep ELISA® technology. Quantitate human PDZ Binding Kinase with

133 pg/mL sensitivity.

SimpleStep ELISA® technology employs capture antibodies conjugated to an affinity tag that is recognized by the monoclonal antibody used to coat our SimpleStep ELISA® plates. This approach to sandwich ELISA allows the formation of the antibody-analyte sandwich complex in a single step, significantly reducing assay time. See the SimpleStep ELISA® protocol summary in the image section for further details. Our SimpleStep ELISA® technology provides several benefits:

- Single-wash protocol reduces assay time to 90 minutes or less
- High sensitivity, specificity and reproducibility from superior antibodies
- Fully validated in biological samples
- 96-wells plate breakable into 12 x 8 wells strips

A 384-well SimpleStep ELISA® microplate ([ab203359](#)) is available to use as an alternative to the 96-well microplate provided with SimpleStep ELISA® kits.

**Notes** PDZ-binding kinase (also known PBK or Lymphocyte-activated killer T-cell-originated protein kinase) is a Serine/Threonine protein kinase in the MAP kinase kinase subfamily. PBK phosphorylates MAP kinase p38. PBK itself is phosphorylated and appears to be active only during the mitotic phase of the cell cycle. When phosphorylated PBK may interact with TP53. PBK may play a role in the activation of lymphoid cells and is found to expressed in many highly proliferative cell lines.

The standard is affinity purified.

Abcam has not and does not intend to apply for the REACH Authorisation of customers' uses of products that contain European Authorisation list (Annex XIV) substances.

It is the responsibility of our customers to check the necessity of application of REACH Authorisation, and any other relevant authorisations, for their intended uses.

**Platform** Microplate

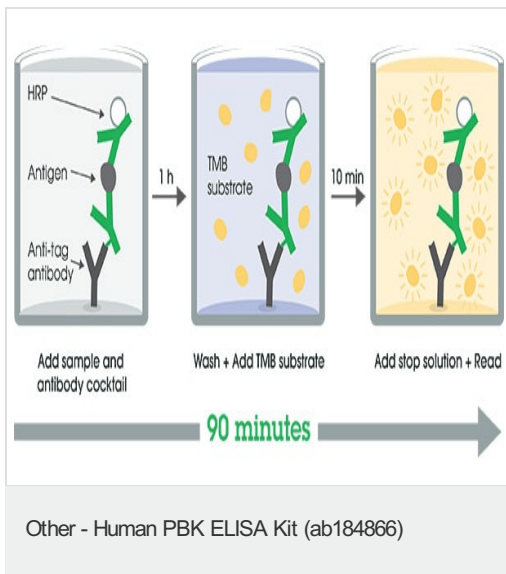
## Properties

**Storage instructions** Store at +4°C. Please refer to protocols.

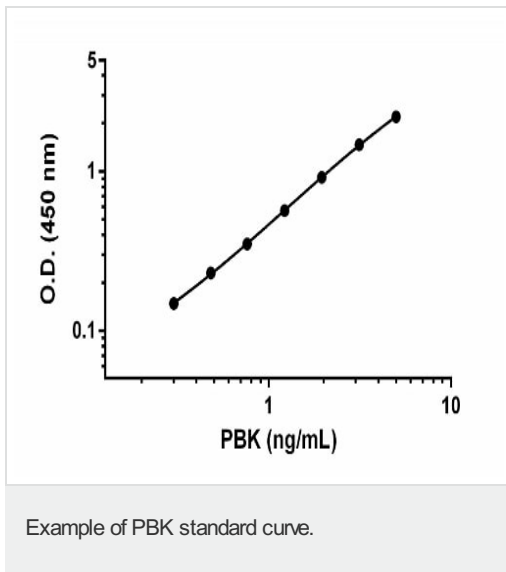
Components	1 x 96 tests
10X Human PDZ Binding Kinase Capture Antibody	1 x 600µl
10X Human PDZ Binding Kinase Detector Antibody	1 x 600µl
10X Wash Buffer PT (ab206977)	1 x 20ml
50X Cell Extraction Enhancer Solution (ab193971)	1 x 1ml
5X Cell Extraction Buffer PTR (ab193970)	1 x 10ml
Antibody Diluent CPI - HAMA Blocker (ab193969)	1 x 6ml
Human PDZ Binding Kinase Lyophilized Recombinant Protein	2 vials

Components	1 x 96 tests
Plate Seals	1 unit
Sample Diluent NS (ab193972)	1 x 12ml
SimpleStep Pre-Coated 96-Well Microplate (ab206978)	1 unit
Stop Solution	1 x 12ml
TMB Development Solution	1 x 12ml

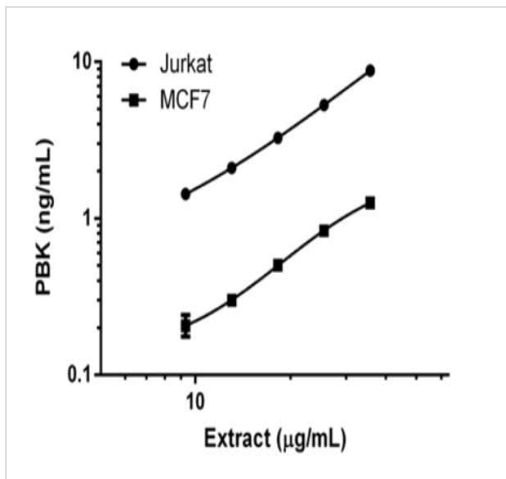
## Images



SimpleStep ELISA technology allows the formation of the antibody-antigen complex in one single step, reducing assay time to 90 minutes. Add samples or standards and antibody mix to wells all at once, incubate, wash, and add your final substrate. See protocol for a detailed step-by-step guide.

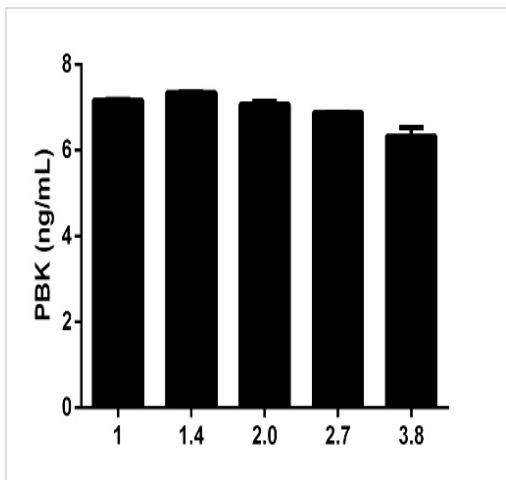


Background-subtracted data values (mean +/- SD) are graphed.



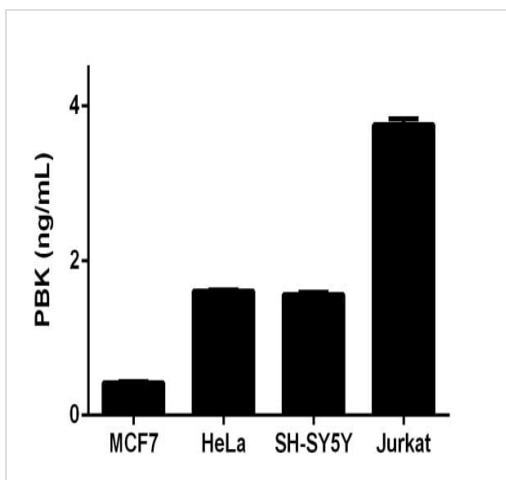
Interpolated concentrations of PBK in MCF7 extract.

The concentrations of PBK protein were interpolated from the PBK standard curve and plotted against the extract load.



Interpolated concentrations of PBK in A431 extract.

The concentrations of PBK protein were interpolated from the PBK standard curve and corrected for sample dilution relative to extract load of 35.7 µg/mL. The mean PBK concentration was determined to be 6.95 ng/mL in A431 extract at 35.7 µg/mL.



Quantitation of PBK expression in different cell lines.

Interpolated values of PBK are plotted for the indicated cell lines based on a extract load of 250 µg/mL.

Powered by  
recombinant antibodies



**Research with confidence**  
Consistent and reproducible results



**Long-term and scalable supply**  
Recombinant technology



**Success from the first experiment**  
Confirmed specificity



**Ethical standards compliant**  
Animal-free production

Sandwich ELISA - Human PBK ELISA Kit  
(ab184866)

To learn more about the advantages of recombinant antibodies see [here](#).

**Please note:** All products are "FOR RESEARCH USE ONLY. NOT FOR USE IN DIAGNOSTIC PROCEDURES"

### Our Abpromise to you: Quality guaranteed and expert technical support

---

- Replacement or refund for products not performing as stated on the datasheet
- Valid for 12 months from date of delivery
- Response to your inquiry within 24 hours
- We provide support in Chinese, English, French, German, Japanese and Spanish
- Extensive multi-media technical resources to help you
- We investigate all quality concerns to ensure our products perform to the highest standards

If the product does not perform as described on this datasheet, we will offer a refund or replacement. For full details of the Abpromise, please visit <https://www.abcam.com/abpromise> or contact our technical team.

### Terms and conditions

---

- Guarantee only valid for products bought direct from Abcam or one of our authorized distributors