

Product datasheet

Human PF4 ELISA Kit (CXCL4) ab189573

Recombinant SimpleStep ELISA

[3 References](#) [4 Images](#)

Overview

Product name Human PF4 ELISA Kit (CXCL4)

Detection method Colorimetric

Precision

Intra-assay

Sample	n	Mean	SD	CV%
Overall	7			6.4%

Inter-assay

Sample	n	Mean	SD	CV%
Overall	3			4.1%

Sample type

Cell culture supernatant, Serum, Hep Plasma, EDTA Plasma, Cit plasma

Assay type

Sandwich (quantitative)

Sensitivity

31 pg/ml

Range

0.04 ng/ml - 2.5 ng/ml

Recovery

Sample specific recovery

Sample type	Average %	Range
Cell culture supernatant	90	89% - 94%
Serum	108	105% - 109%
Hep Plasma	110	105% - 115%
EDTA Plasma	102	89% - 113%
Cit plasma	114	102% - 124%

Assay time

1h 30m

Assay duration	One step assay
Species reactivity	Reacts with: Human Does not react with: Goat, Cow, Pig
Product overview	Human PF4 (CXCL4) ELISA kit has been re-developed. We have identified new recombinant monoclonal antibodies to provide improved performance and consistency. This version will be discontinued when inventory is depleted.

Human PF4 ELISA Kit (CXCL4) (ab189573) is a single-wash 90 min sandwich ELISA designed for the quantitative measurement of PF4 (CXCL4) protein in cell culture supernatant, cit plasma, edta plasma, hep plasma, and serum. It uses our proprietary SimpleStep ELISA® technology. Quantitate Human PF4 (CXCL4) with 31 pg/ml sensitivity.

SimpleStep ELISA® technology employs capture antibodies conjugated to an affinity tag that is recognized by the monoclonal antibody used to coat our SimpleStep ELISA® plates. This approach to sandwich ELISA allows the formation of the antibody-analyte sandwich complex in a single step, significantly reducing assay time. See the SimpleStep ELISA® protocol summary in the image section for further details. Our SimpleStep ELISA® technology provides several benefits:

- Single-wash protocol reduces assay time to 90 minutes or less
- High sensitivity, specificity and reproducibility from superior antibodies
- Fully validated in biological samples
- 96-wells plate breakable into 12 x 8 wells strips

A 384-well SimpleStep ELISA® microplate ([ab203359](#)) is available to use as an alternative to the 96-well microplate provided with SimpleStep ELISA® kits.

Notes	Platelet factor-4 (PF4/CXCL4) is a 70-amino acid protein that is released from the alpha-granules of activated platelets whose major physiologic role appears to be inhibiting local antithrombin III activity and promoting coagulation. PF4 (CXCL4) has a role in inflammation and wound repair by acting as a strong chemoattractant for neutrophils, monocytes, and fibroblasts.
--------------	--

Platform	Microplate
-----------------	------------

Properties

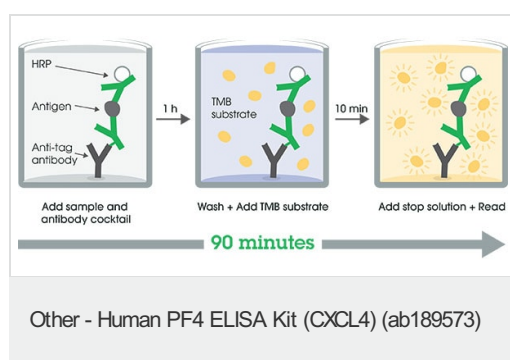
Storage instructions	Store at +4°C. Please refer to protocols.
-----------------------------	---

Components	1 x 96 tests
10X Human PF4 Capture Antibody	1 x 600µl
10X Human PF4 Detector Antibody	1 x 600µl
10X Wash Buffer PT (ab206977)	1 x 20ml
Antibody Diluent CPI - HAMA Blocker (ab193969)	1 x 6ml
Human PF4 Lyophilized Recombinant Protein	2 vials

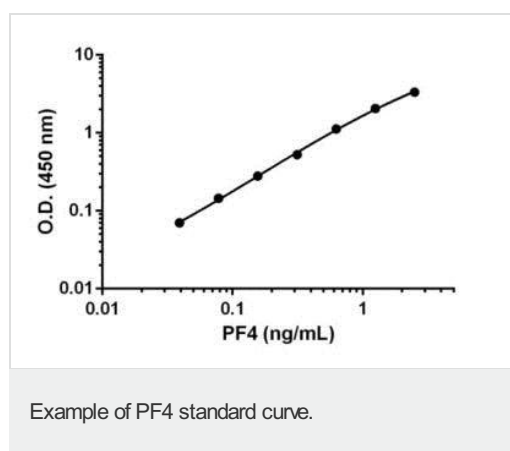
Components	1 x 96 tests
Plate Seals	1 unit
Sample Diluent NS (ab193972)	1 x 50ml
SimpleStep Pre-Coated 96-Well Microplate (ab206978)	1 unit
Stop Solution	1 x 12ml
TMB Development Solution	1 x 12ml

Function	Released during platelet aggregation. Neutralizes the anticoagulant effect of heparin because it binds more strongly to heparin than to the chondroitin-4-sulfate chains of the carrier molecule. Chemotactic for neutrophils and monocytes. Inhibits endothelial cell proliferation, the short form is a more potent inhibitor than the longer form.
Sequence similarities	Belongs to the intercrine alpha (chemokine CxC) family.
Post-translational modifications	Binds non-covalently to a proteoglycan molecule.
Cellular localization	Secreted.

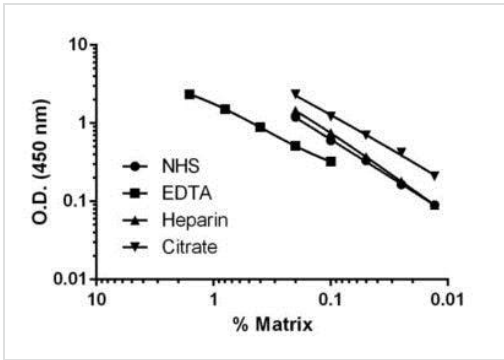
Images



SimpleStep ELISA technology allows the formation of the antibody-antigen complex in one single step, reducing assay time to 90 minutes. Add samples or standards and antibody mix to wells all at once, incubate, wash, and add your final substrate. See protocol for a detailed step-by-step guide.

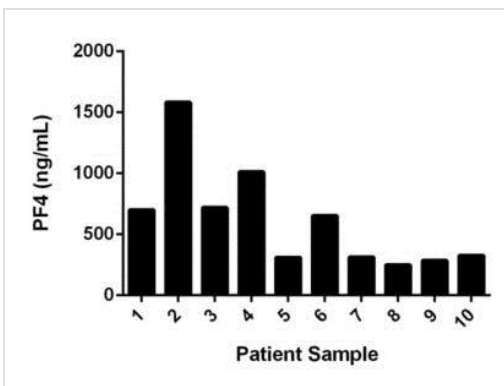


Background-subtracted data values (mean +/- SD) are graphed.



Background-subtracted data values (mean +/- SD, n = 2) are graphed.

Titration of Normal Human Serum and Plasma samples within the working range of the assay.



Interpolated values of PF4 are plotted for the indicated sample type multiplied by the dilution factor.

Quantitation of PF4 expression in Normal Human Serum from individual donors.

Please note: All products are "FOR RESEARCH USE ONLY. NOT FOR USE IN DIAGNOSTIC PROCEDURES"

Our Abpromise to you: Quality guaranteed and expert technical support

- Replacement or refund for products not performing as stated on the datasheet
- Valid for 12 months from date of delivery
- Response to your inquiry within 24 hours
- We provide support in Chinese, English, French, German, Japanese and Spanish
- Extensive multi-media technical resources to help you
- We investigate all quality concerns to ensure our products perform to the highest standards

If the product does not perform as described on this datasheet, we will offer a refund or replacement. For full details of the Abpromise, please visit <https://www.abcam.com/abpromise> or contact our technical team.

Terms and conditions

- Guarantee only valid for products bought direct from Abcam or one of our authorized distributors