

## Product datasheet

# Anti-Human Serum Albumin antibody [15C7] ab10241

★★★★★ [7 Abreviews](#) [33 References](#) [4 Images](#)

### Overview

---

<b>Product name</b>	Anti-Human Serum Albumin antibody [15C7]
<b>Description</b>	Mouse monoclonal [15C7] to Human Serum Albumin
<b>Host species</b>	Mouse
<b>Specificity</b>	No cross-reactivity with other human proteins tested. Does not react with bovine serum albumin, egg white albumin or human alpha fetoprotein.
<b>Tested applications</b>	<b>Suitable for:</b> WB, Sandwich ELISA, Dot blot
<b>Species reactivity</b>	<b>Reacts with:</b> Human <b>Does not react with:</b> Chicken, Cow
<b>Immunogen</b>	Full length native protein (purified) corresponding to Human Serum Albumin. Database link: <a href="#">P02768</a>
<b>General notes</b>	<p>Concentration varies from lot to lot and can be provided on request.</p> <p>This product was changed from ascites to tissue culture supernatant on 17th October 2017 and product received after this date will be from tissue culture supernatant.</p> <p>The Life Science industry has been in the grips of a reproducibility crisis for a number of years. Abcam is leading the way in addressing this with our range of recombinant monoclonal antibodies and knockout edited cell lines for gold-standard validation. Please check that this product meets your needs before purchasing.</p> <p>If you have any questions, special requirements or concerns, please send us an inquiry and/or contact our Support team ahead of purchase. Recommended alternatives for this product can be found below, along with publications, customer reviews and Q&amp;As</p>

### Properties

---

<b>Form</b>	Liquid
<b>Storage instructions</b>	Shipped at 4°C. Upon delivery aliquot and store at -20°C. Avoid freeze / thaw cycles.
<b>Storage buffer</b>	pH: 7.40 Preservative: 0.09% Sodium azide Constituent: PBS
<b>Purity</b>	Protein A purified
<b>Clonality</b>	Monoclonal

Clone number	15C7
Myeloma	Sp2/0
Isotype	IgG2b

## Applications

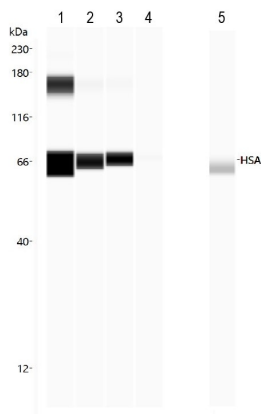
**The Abpromise guarantee** Our **Abpromise guarantee** covers the use of ab10241 in the following tested applications. The application notes include recommended starting dilutions; optimal dilutions/concentrations should be determined by the end user.

Application	Abreviews	Notes
WB	★★★★★ (2)	Use at an assay dependent concentration. Predicted molecular weight: 65 kDa.
Sandwich ELISA		Use a concentration of 1 µg/ml. Can be paired for Sandwich ELISA with <b>Rabbit polyclonal to Human Serum Albumin (ab2406)</b> .
Dot blot		Use at an assay dependent concentration.

## Target

<b>Function</b>	Serum albumin, the main protein of plasma, has a good binding capacity for water, Ca(2+), Na(+), K(+), fatty acids, hormones, bilirubin and drugs. Its main function is the regulation of the colloidal osmotic pressure of blood. Major zinc transporter in plasma, typically binds about 80% of all plasma zinc.
<b>Tissue specificity</b>	Plasma.
<b>Involvement in disease</b>	Defects in ALB are a cause of familial dysalbuminemic hyperthyroxinemia (FDH) [MIM:103600]. FDH is a form of euthyroid hyperthyroxinemia that is due to increased affinity of ALB for T(4). It is the most common cause of inherited euthyroid hyperthyroxinemia in Caucasian population.
<b>Sequence similarities</b>	Belongs to the ALB/AFP/VDB family. Contains 3 albumin domains.
<b>Post-translational modifications</b>	Kenitra variant is partially O-glycosylated at Thr-620. It has two new disulfide bonds Cys-600 to Cys-602 and Cys-601 to Cys-606. Glycated in diabetic patients. Phosphorylation sites are present in the extracellular medium. Acetylated on Lys-223 by acetylsalicylic acid.
<b>Cellular localization</b>	Secreted.

## Images



Dot Blot - Anti-Human Serum Albumin antibody [15C7] (ab10241)

Dot Blot - Anti-Human Serum Albumin antibody [15C7] (ab10241)

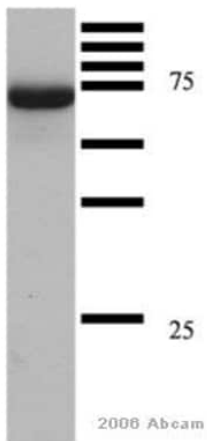
Lane 1: HSA 0.5 mg/ml

Lane 2: HSA 0.25 mg/ml

Lane 3: HSA 0.1 mg/ml

Lane 4: HSA 0.01 mg/ml

Lane 5: BSA 0.5 mg/ml



Western blot - Anti-Human Serum Albumin antibody [15C7] (ab10241)

This image is courtesy of an Abreview submitted by John Andersen

Anti-Human Serum Albumin antibody [15C7] (ab10241) at 1/2000 dilution (in 5% milk for 1 hour) + Human blood serum at 2  $\mu$ g

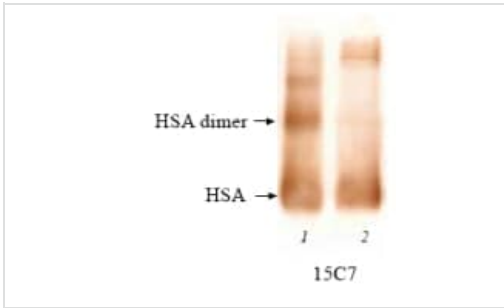
**Secondary**

anti-mouse IgG (H&L)

Developed using the ECL technique.

**Predicted band size:** 65 kDa

**Exposure time:** 5 seconds

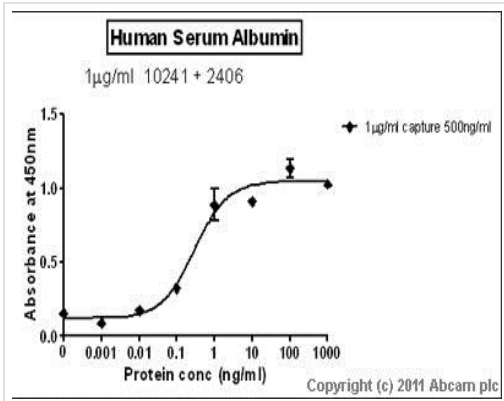


Western blot - Anti-Human Serum Albumin antibody [15C7] (ab10241)

Detection of Human Serum Albumin by ab10241 in western blotting.

Lane 1 - human serum albumin, 3 µg.

Lane 2 - normal human serum, ~3 µg of human serum albumin.



Sandwich ELISA - Anti-Human Serum Albumin antibody [15C7] (ab10241)

Standard Curve for Human Serum Albumin (Analyte: Human Serum Albumin protein (**ab67670**)); dilution range 1pg/ml to 1µg/ml using Capture Antibody Mouse monoclonal [15C7] to Human Serum Albumin (ab10241) at 1µg/ml and Detector Antibody Rabbit polyclonal to Human Serum Albumin (**ab2406**) at 0.5µg/ml.

**Please note:** All products are "FOR RESEARCH USE ONLY. NOT FOR USE IN DIAGNOSTIC PROCEDURES"

### Our Abpromise to you: Quality guaranteed and expert technical support

- Replacement or refund for products not performing as stated on the datasheet
- Valid for 12 months from date of delivery
- Response to your inquiry within 24 hours
- We provide support in Chinese, English, French, German, Japanese and Spanish
- Extensive multi-media technical resources to help you
- We investigate all quality concerns to ensure our products perform to the highest standards

If the product does not perform as described on this datasheet, we will offer a refund or replacement. For full details of the Abpromise, please visit <https://www.abcam.com/abpromise> or contact our technical team.

### Terms and conditions

- Guarantee only valid for products bought direct from Abcam or one of our authorized distributors