


Product datasheet

Anti-hUPF2/RENT2 antibody ab157108

★ ★ ★ ★ ★ 1 Abreviews 3 Images

Overview

Product name	Anti-hUPF2/RENT2 antibody
Description	Rabbit polyclonal to hUPF2/RENT2
Host species	Rabbit
Tested applications	Suitable for: WB, IP
Species reactivity	Reacts with: Mouse, Human Predicted to work with: Rabbit, Horse, Cow, Dog, Pig, Chimpanzee, Ferret, Gorilla, Opossum, Platypus 
Immunogen	Synthetic peptide, corresponding to a region within amino acids 1-50 of Human hUPF2/RENT2 (NP_056357.1). Run BLAST with ExPASy Run BLAST with NCBI
Positive control	293T, HeLa, Jurkat, NIH 3T3, TCMK and 4T1 whole cell lysates.

Properties

Form	Liquid
Storage instructions	Shipped at 4°C. Store at +4°C.
Storage buffer	Preservative: 0.09% Sodium azide Constituent: 99% Tris citrate/phosphate pH 7 to 8
Purity	Immunogen affinity purified
Purification notes	ab157108 was affinity purified using an epitope specific to hUPF2/RENT2 immobilized on solid support.
Clonality	Polyclonal
Isotype	IgG

Applications

Our [Abpromise guarantee](#) covers the use of **ab157108** in the following tested applications.

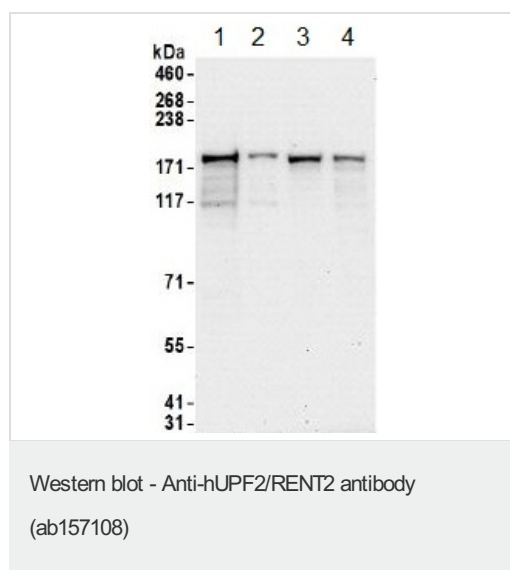
The application notes include recommended starting dilutions; optimal dilutions/concentrations should be determined by the end user.

Application	Abreviews	Notes
WB	★☆☆☆☆	1/1000 - 1/5000. Predicted molecular weight: 148 kDa.
IP		Use at 2-10 µg/mg of lysate.

Target

Function	Part of a post-splicing multiprotein complex involved in both mRNA nuclear export and mRNA surveillance. Involved in nonsense-mediated decay (NMD) of mRNAs containing premature stop codons. Binds spliced mRNA.
Tissue specificity	Ubiquitous.
Sequence similarities	Contains 3 MIF4G domains.
Cellular localization	Cytoplasm > perinuclear region.

Images



All lanes : Anti-hUPF2/RENT2 antibody (ab157108) at 0.4 µg/ml

Lane 1 : 293T whole cell lysate at 50 µg

Lane 2 : 293T whole cell lysate at 15 µg

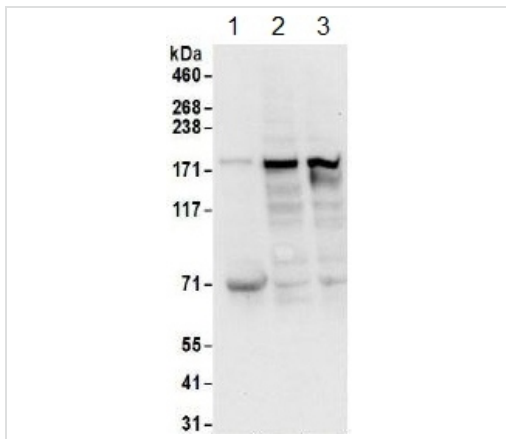
Lane 3 : HeLa whole cell lysate at 50 µg

Lane 4 : Jurkat whole cell lysate at 50 µg

Developed using the ECL technique.

Predicted band size: 148 kDa

Exposure time: 30 seconds



Western blot - Anti-hUPF2/RENT2 antibody
(ab157108)

All lanes : Anti-hUPF2/RENT2 antibody (ab157108) at 1 µg/ml

Lane 1 : NIH 3T3 whole cell lysate

Lane 2 : TCMK whole cell lysate

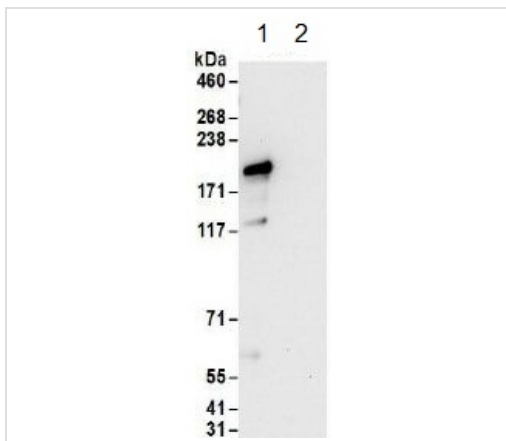
Lane 3 : 4T1 whole cell lysate

Lysates/proteins at 50 µg per lane.

Developed using the ECL technique.

Predicted band size: 148 kDa

Exposure time: 10 seconds



Immunoprecipitation - Anti-hUPF2/RENT2 antibody
(ab157108)

Detection of hUPF2/RENT2 in Immunoprecipitates of 293T whole cell lysates (1 mg for IP, 20% of IP loaded) using ab157108 at 6 µg/mg lysate for IP (Lane 1). For WB detection an ab157108 was used at 1 µg/ml. Lane 2 represents control IgG IP. Detection: Chemiluminescence with an exposure time of 30 seconds.

Please note: All products are "FOR RESEARCH USE ONLY AND ARE NOT INTENDED FOR DIAGNOSTIC OR THERAPEUTIC USE"

Our Abpromise to you: Quality guaranteed and expert technical support

- Replacement or refund for products not performing as stated on the datasheet
- Valid for 12 months from date of delivery
- Response to your inquiry within 24 hours
- We provide support in Chinese, English, French, German, Japanese and Spanish
- Extensive multi-media technical resources to help you
- We investigate all quality concerns to ensure our products perform to the highest standards

If the product does not perform as described on this datasheet, we will offer a refund or replacement. For full details of the Abpromise, please visit <https://www.abcam.com/abpromise> or contact our technical team.

Terms and conditions

- Guarantee only valid for products bought direct from Abcam or one of our authorized distributors