



Product datasheet

Anti-ICA69 antibody ab224400

2 Images

Overview

Product name	Anti-ICA69 antibody
Description	Rabbit polyclonal to ICA69
Host species	Rabbit
Tested applications	Suitable for: IHC-P, WB
Species reactivity	Reacts with: Human
Immunogen	<p>Recombinant fragment corresponding to Human ICA69 aa 343-481. Sequence:</p> <p>DELLDMKSEEGACLGPVAGTPEPEGADKDDLLLLSEI FNASSLEEGEFSK EWAAVFGDGQVKEPVPTMALGEPDPAQTGSGFLP SQLLDQNMKDLQASL QEPAKAASDLTAWFSLFADLDPLSNPDAVGKTDKEH ELL</p> <p>Database link: Q05084</p> <p style="text-align: right;"> Run BLAST with  Run BLAST with</p>
Positive control	IHC-P: Human heart muscle tissue. WB: Human liver and tonsil lysates; RT4 cell lysate.
General notes	Previously labelled as ICA1.

Properties

Form	Liquid
Storage instructions	Shipped at 4°C. Store at +4°C short term (1-2 weeks). Upon delivery aliquot. Store at -20°C long term. Avoid freeze / thaw cycle.
Storage buffer	<p>pH: 7.20 Preservative: 0.02% Sodium azide Constituents: 40% Glycerol, PBS</p>
Purity	Immunogen affinity purified
Clonality	Polyclonal
Isotype	IgG

Applications

Our [Abpromise guarantee](#) covers the use of **ab224400** in the following tested applications.

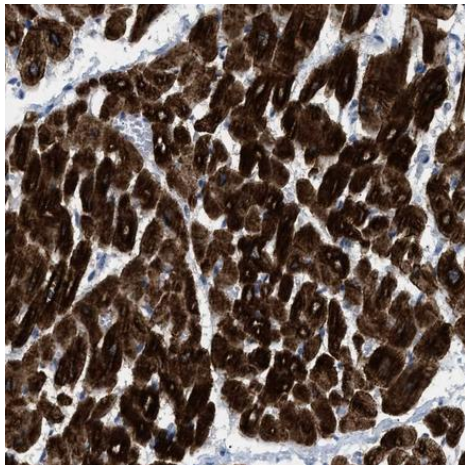
The application notes include recommended starting dilutions; optimal dilutions/concentrations should be determined by the end user.

Application	Abreviews	Notes
IHC-P		1/200 - 1/500. Perform heat mediated antigen retrieval with citrate buffer pH 6 before commencing with IHC staining protocol.
WB		1/100 - 1/250. Predicted molecular weight: 55 kDa.

Target

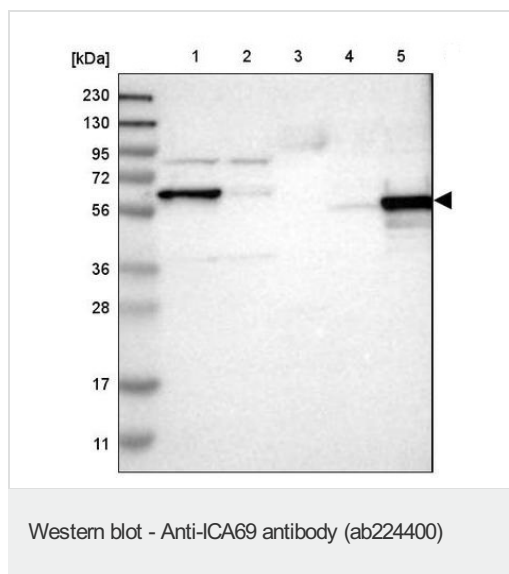
Function	May play a role in neurotransmitter secretion.
Tissue specificity	Expressed abundantly in pancreas, heart and brain with low levels of expression in lung, kidney, liver and thyroid.
Sequence similarities	Contains 1 AH domain.
Cellular localization	Cytoplasm > cytosol. Golgi apparatus membrane. Cytoplasmic vesicle > secretory vesicle membrane. Cytoplasmic vesicle > secretory vesicle > synaptic vesicle membrane. Predominantly cytosolic. Also exists as a membrane-bound form which has been found associated with synaptic vesicles and also with the Golgi complex and immature secretory granules.

Images



Paraffin-embedded human heart muscle tissue stained for ICA69 using ab224400 at 1/200 dilution in immunohistochemical analysis.

Immunohistochemistry (Formalin/PFA-fixed paraffin-embedded sections) - Anti-ICA69 antibody (ab224400)



All lanes : Anti-ICA69 antibody (ab224400) at 1/100 dilution

Lane 1 : RT4 (human urinary bladder cancer cell line) cell lysate

Lane 2 : U-251 MG sp (human brain glioma cell line) cell lysate

Lane 3 : Human plasma (IgG/HSA depleted)

Lane 4 : Human liver lysate

Lane 5 : Human tonsil lysate

Performed under reducing conditions.

Predicted band size: 55 kDa

Please note: All products are "FOR RESEARCH USE ONLY. NOT FOR USE IN DIAGNOSTIC PROCEDURES"

Our Abpromise to you: Quality guaranteed and expert technical support

- Replacement or refund for products not performing as stated on the datasheet
- Valid for 12 months from date of delivery
- Response to your inquiry within 24 hours
- We provide support in Chinese, English, French, German, Japanese and Spanish
- Extensive multi-media technical resources to help you
- We investigate all quality concerns to ensure our products perform to the highest standards

If the product does not perform as described on this datasheet, we will offer a refund or replacement. For full details of the Abpromise, please visit <https://www.abcam.com/abpromise> or contact our technical team.

Terms and conditions

- Guarantee only valid for products bought direct from Abcam or one of our authorized distributors