

Product datasheet

Anti-ICB1 antibody ab236975

3 Images

Overview

Product name	Anti-ICB1 antibody
Description	Rabbit polyclonal to ICB1
Host species	Rabbit
Tested applications	Suitable for: WB, IHC-P, ICC/IF
Species reactivity	Reacts with: Mouse, Human
Immunogen	Recombinant fragment corresponding to Human ICB1 aa 62-177. Database link: Q5TEJ8
Positive control	WB: A549 whole cell lysate. IHC-P: Human pancreatic cancer tissue. ICC/IF: NIH/3T3 cells.
General notes	This product was previously labelled as C1orf38

Reproducibility is key to advancing scientific discovery and accelerating scientists' next breakthrough.

Abcam is leading the way with our range of recombinant antibodies, knockout-validated antibodies and knockout cell lines, all of which support improved reproducibility.

We are also planning to innovate the way in which we present recommended applications and species on our product datasheets, so that only applications & species that have been tested in our own labs, our suppliers or by selected trusted collaborators are covered by our Abpromise™ guarantee.

In preparation for this, we have started to update the applications & species that this product is Abpromise guaranteed for.

We are also updating the applications & species that this product has been “predicted to work with,” however this information is not covered by our Abpromise guarantee.

Applications & species from publications and Abreviews that have not been tested in our own labs or in those of our suppliers are not covered by the Abpromise guarantee.

Please check that this product meets your needs before purchasing. If you have any questions, special requirements or concerns, please send us an inquiry and/or contact our Support team ahead of purchase. Recommended alternatives for this product can be found below, as well as customer reviews and Q&As.

Properties

Form	Liquid
Storage instructions	Shipped at 4°C. Store at +4°C short term (1-2 weeks). Upon delivery aliquot. Store at -20°C long term. Avoid freeze / thaw cycle.
Storage buffer	pH: 7.40 Constituents: 50% Glycerol (glycerin, glycerine), PBS, 0.03% Proclin 300
Purity	Protein G purified
Purification notes	Purity >95%.
Clonality	Polyclonal
Isotype	IgG

Applications

Our [Abpromise guarantee](#) covers the use of **ab236975** in the following tested applications.

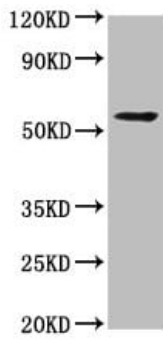
The application notes include recommended starting dilutions; optimal dilutions/concentrations should be determined by the end user.

Application	Abreviews	Notes
WB		1/500 - 1/5000. Predicted molecular weight: 72 kDa.
IHC-P		1/200 - 1/500.
ICC/IF		1/50 - 1/200.

Target

Function	May constitute a control point in macrophage inflammatory response, promoting LPS-induced TNF production.
Tissue specificity	Expressed in different endometrial adenocarcinoma cell lines and various other cell lines apart from the prostate cell line LNCaP and the ovarian cancer cell line BG1.
Sequence similarities	Belongs to the themis family.
Post-translational modifications	Phosphorylation at Tyr-632 is induced by LPS.

Images



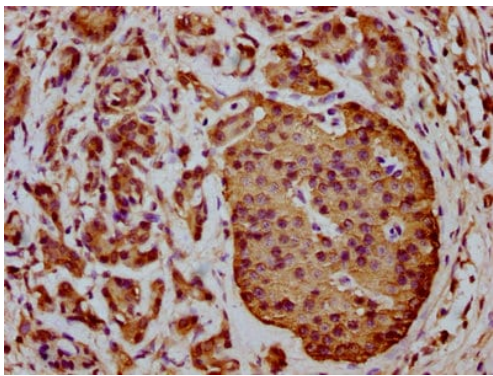
Western blot - Anti-ICB1 antibody (ab236975)

Anti-ICB1 antibody (ab236975) at 1/500 dilution + A549 (Human lung carcinoma cell line) whole cell lysate

Secondary

Goat polyclonal to rabbit IgG at 1/50000 dilution

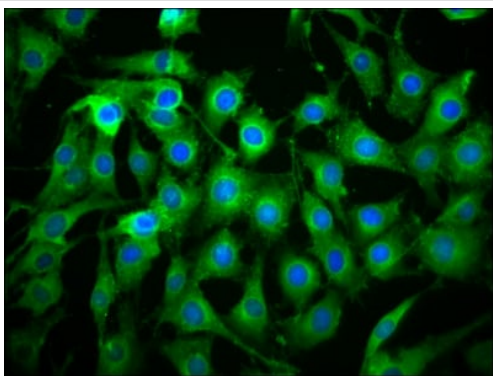
Predicted band size: 72 kDa



Immunohistochemistry (Formalin/PFA-fixed paraffin-embedded sections) - Anti-ICB1 antibody (ab236975)

Paraffin-embedded human pancreatic cancer tissue stained for ICB1 using ab236975 at 1/100 dilution in immunohistochemical analysis.

After dewaxing and hydration, antigen retrieval was mediated by high pressure in a citrate buffer (pH 6.0). Section was blocked with 10% normal goat serum 30 minutes at RT. Then primary antibody (1% BSA) was incubated at 4°C overnight. The primary is detected by a biotinylated secondary antibody and visualized using an HRP conjugated SP system.



Immunocytochemistry/ Immunofluorescence - Anti-ICB1 antibody (ab236975)

NIH/3T3 (Mouse embryo fibroblast cell line) cells stained for ICB1 (green) using ab236975 at 1/100 dilution in ICC/IF, followed by Alexa Fluor 488[®] conjugated Goat Anti-Rabbit IgG (H+L). Counter-stained with DAPI. The cells were fixed in 4% formaldehyde, permeabilized using 0.2% Triton X-100 and blocked in 10% normal goat serum. The cells were then incubated with the antibody overnight at 4°C.

Please note: All products are "FOR RESEARCH USE ONLY. NOT FOR USE IN DIAGNOSTIC PROCEDURES"

Our Abpromise to you: Quality guaranteed and expert technical support

- Replacement or refund for products not performing as stated on the datasheet
- Valid for 12 months from date of delivery

- Response to your inquiry within 24 hours
- We provide support in Chinese, English, French, German, Japanese and Spanish
- Extensive multi-media technical resources to help you
- We investigate all quality concerns to ensure our products perform to the highest standards

If the product does not perform as described on this datasheet, we will offer a refund or replacement. For full details of the Abpromise, please visit <https://www.abcam.com/abpromise> or contact our technical team.

Terms and conditions

- Guarantee only valid for products bought direct from Abcam or one of our authorized distributors