


Product datasheet

Anti-ID2 antibody [4E12G5] ab166708

★ ★ ★ ★ ★ 1 Abreviews 7 References 4 Images

Overview

Product name	Anti-ID2 antibody [4E12G5]
Description	Mouse monoclonal [4E12G5] to ID2
Host species	Mouse
Tested applications	Suitable for: WB, IHC-P, Flow Cyt
Species reactivity	Reacts with: Human Predicted to work with: Mouse, Rat, Cow, Pig, Chimpanzee, Cynomolgus monkey, Orangutan 
Immunogen	Purified recombinant full length protein, corresponding to amino acids 1-134 of Human ID2, expressed in E. coli (UniProt: Q02363). Run BLAST with ExPASy Run BLAST with NCBI
Positive control	Human recombinant ID2 protein; SK N SH cells; Human breast cancer and rectum cancer tissues.
General notes	<p>Reproducibility is key to advancing scientific discovery and accelerating scientists' next breakthrough.</p> <p>Abcam is leading the way with our range of recombinant antibodies, knockout-validated antibodies and knockout cell lines, all of which support improved reproducibility.</p> <p>We are also planning to innovate the way in which we present recommended applications and species on our product datasheets, so that only applications & species that have been tested in our own labs, our suppliers or by selected trusted collaborators are covered by our Abpromise™ guarantee.</p> <p>In preparation for this, we have started to update the applications & species that this product is Abpromise guaranteed for.</p> <p>We are also updating the applications & species that this product has been “predicted to work with,” however this information is not covered by our Abpromise guarantee.</p> <p>Applications & species from publications and Abreviews that have not been tested in our own labs or in those of our suppliers are not covered by the Abpromise guarantee.</p> <p>Please check that this product meets your needs before purchasing. If you have any questions, special requirements or concerns, please send us an inquiry and/or contact our Support team ahead of purchase. Recommended alternatives for this product can be found below, as well as customer reviews and Q&As.</p>

Properties

Form	Liquid
Storage instructions	Shipped at 4°C. Upon delivery aliquot and store at -20°C. Avoid repeated freeze / thaw cycles.
Storage buffer	Preservative: 0.05% Sodium azide Constituent: PBS
Purity	Protein G purified
Clonality	Monoclonal
Clone number	4E12G5
Isotype	IgG1

Applications

Our [Abpromise guarantee](#) covers the use of **ab166708** in the following tested applications.

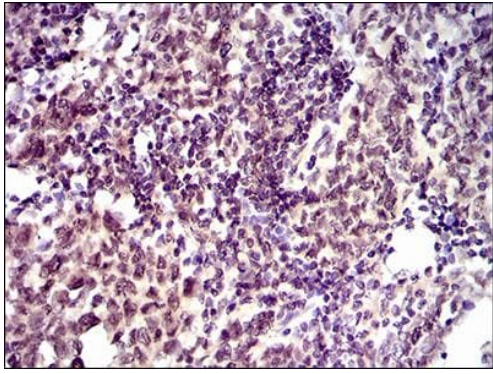
The application notes include recommended starting dilutions; optimal dilutions/concentrations should be determined by the end user.

Application	Abreviews	Notes
WB		1/500 - 1/2000. Predicted molecular weight: 17.3 kDa.
IHC-P	★ ★ ★ ★ ★	1/200 - 1/1000.
Flow Cyt		1/200 - 1/400. ab170190 - Mouse monoclonal IgG1, is suitable for use as an isotype control with this antibody.

Target

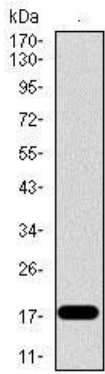
Function	ID (inhibitor of DNA binding) HLH proteins lack a basic DNA-binding domain but are able to form heterodimers with other HLH proteins, thereby inhibiting DNA binding. ID-2 may be an inhibitor of tissue-specific gene expression.
Tissue specificity	Highly expressed in early fetal tissues, including those of the central nervous system.
Sequence similarities	Contains 1 basic helix-loop-helix (bHLH) domain.
Developmental stage	Found in most early fetal tissues but not in the corresponding mature tissues.
Cellular localization	Cytoplasm. Nucleus.

Images



Immunohistochemistry (Formalin/PFA-fixed paraffin-embedded sections) - Anti-ID2 antibody [4E12G5] (ab166708)

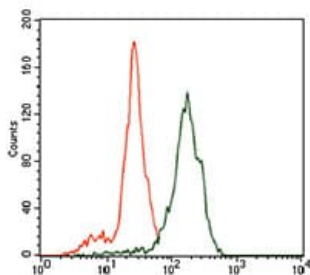
Immunohistochemical analysis of paraffin embedded, DAB-stained Human breast cancer tissue labeling ID2 using ab166708 at a 1/200 dilution.



Western blot - Anti-ID2 antibody [4E12G5] (ab166708)

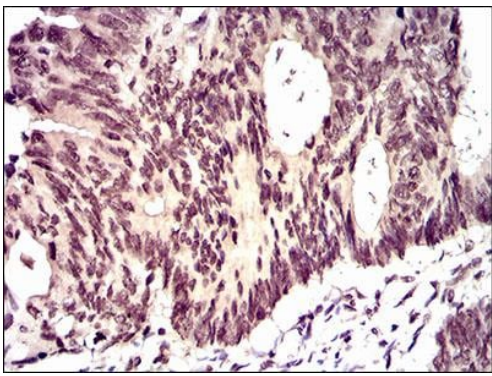
Anti-ID2 antibody [4E12G5] (ab166708) at 1/500 dilution + recombinant Human ID2 protein at 1 μ g

Predicted band size: 17.3 kDa



Flow Cytometry - Anti-ID2 antibody [4E12G5] (ab166708)

Flow cytometric analysis of ID2-labeled SK N SH cells (green) and negative control cells (red), using ab166708 at a 1/200 dilution.



Immunohistochemical analysis of paraffin embedded, DAB-stained Human rectum cancer tissue labeling ID2 using ab166708 at a 1/200 dilution.

Immunohistochemistry (Formalin/PFA-fixed paraffin-embedded sections) - Anti-ID2 antibody [4E12G5] (ab166708)

Please note: All products are "FOR RESEARCH USE ONLY. NOT FOR USE IN DIAGNOSTIC PROCEDURES"

Our Abpromise to you: Quality guaranteed and expert technical support

- Replacement or refund for products not performing as stated on the datasheet
- Valid for 12 months from date of delivery
- Response to your inquiry within 24 hours
- We provide support in Chinese, English, French, German, Japanese and Spanish
- Extensive multi-media technical resources to help you
- We investigate all quality concerns to ensure our products perform to the highest standards

If the product does not perform as described on this datasheet, we will offer a refund or replacement. For full details of the Abpromise, please visit <https://www.abcam.com/abpromise> or contact our technical team.

Terms and conditions

- Guarantee only valid for products bought direct from Abcam or one of our authorized distributors