

## Product datasheet

# Anti-ID2 antibody [OTI9A8] ab236504

3 Images

### Overview

<b>Product name</b>	Anti-ID2 antibody [OTI9A8]
<b>Description</b>	Mouse monoclonal [OTI9A8] to ID2
<b>Host species</b>	Mouse
<b>Tested applications</b>	<b>Suitable for:</b> IHC-P, WB
<b>Species reactivity</b>	<b>Reacts with:</b> Human <b>Predicted to work with:</b> Mouse, Rat, Cow, Pig, Cynomolgus monkey, Orangutan
<b>Immunogen</b>	Recombinant full length protein corresponding to Human ID2 aa 1-134. (NP_002157) produced in E.coli. Sequence: MKAFSPVRSVRKNSLSDHSLGISRSKTPVDDPMSLLYNM NDCYSKCLKELV PSIPQNKVKSKMEILQHVIDYILDQLALDSHPTIVSLHHQRP GQNQASR TPLTTLNTDISILSLQASEFPSELMSNDSKALCG  Database link: <a href="#">Q02363</a>  <a href="#">Run BLAST with</a> <a href="#">Run BLAST with</a>
<b>Positive control</b>	WB: HEK-293T transfected with pCMV6-ENTRY ID2 whole cell lysate. IHC-P: Human liver carcinoma tissue. ICC/IF: COS-7 cells transiently transfected with pCMV6-ENTRY ID2.
<b>General notes</b>	Clone OTI9A8 (formerly 9A8).  Reproducibility is key to advancing scientific discovery and accelerating scientists' next breakthrough.  Abcam is leading the way with our range of recombinant antibodies, knockout-validated antibodies and knockout cell lines, all of which support improved reproducibility.  We are also planning to innovate the way in which we present recommended applications and species on our product datasheets, so that only applications & species that have been tested in our own labs, our suppliers or by selected trusted collaborators are covered by our Abpromise™ guarantee.  In preparation for this, we have started to update the applications & species that this product is Abpromise guaranteed for.  We are also updating the applications & species that this product has been “predicted to work with,” however this information is not covered by our Abpromise guarantee.

Applications & species from publications and Abreviews that have not been tested in our own labs or in those of our suppliers are not covered by the Abpromise guarantee.

Please check that this product meets your needs before purchasing. If you have any questions, special requirements or concerns, please send us an inquiry and/or contact our Support team ahead of purchase. Recommended alternatives for this product can be found below, as well as customer reviews and Q&As.

## Properties

---

<b>Form</b>	Liquid
<b>Storage instructions</b>	Shipped at 4°C. Store at +4°C short term (1-2 weeks). Upon delivery aliquot. Store at -20°C long term. Avoid freeze / thaw cycle.
<b>Storage buffer</b>	pH: 7.30 Preservative: 0.02% Sodium azide Constituents: PBS, 1% BSA, 50% Glycerol
<b>Purity</b>	Affinity purified
<b>Purification notes</b>	Purified from cell culture supernatant.
<b>Clonality</b>	Monoclonal
<b>Clone number</b>	OTI9A8
<b>Isotype</b>	IgG1

## Applications

---

Our [Abpromise guarantee](#) covers the use of **ab236504** in the following tested applications.

The application notes include recommended starting dilutions; optimal dilutions/concentrations should be determined by the end user.

Application	Abreviews	Notes
IHC-P		1/50. Heat-induced epitope retrieval by 10 mM citric buffer, pH 6.0, 100°C for 10 minutes
WB		1/500. Predicted molecular weight: 14 kDa.

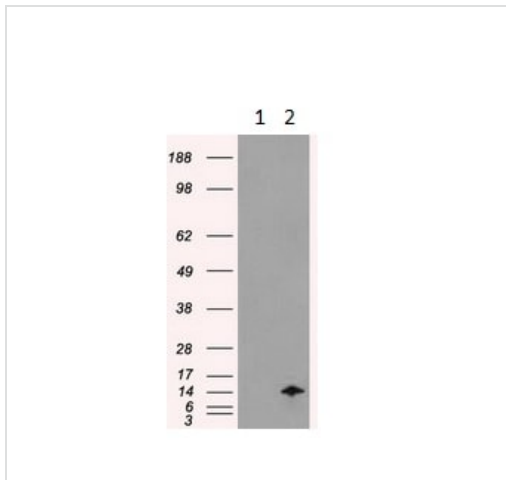
---

## Target

---

<b>Function</b>	ID (inhibitor of DNA binding) HLH proteins lack a basic DNA-binding domain but are able to form heterodimers with other HLH proteins, thereby inhibiting DNA binding. ID-2 may be an inhibitor of tissue-specific gene expression.
<b>Tissue specificity</b>	Highly expressed in early fetal tissues, including those of the central nervous system.
<b>Sequence similarities</b>	Contains 1 basic helix-loop-helix (bHLH) domain.
<b>Developmental stage</b>	Found in most early fetal tissues but not in the corresponding mature tissues.
<b>Cellular localization</b>	Cytoplasm. Nucleus.

---



Western blot - Anti-ID2 antibody [OT19A8] (ab236504)

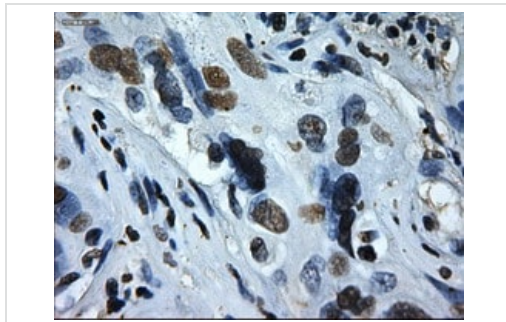
**All lanes :** Anti-ID2 antibody [OT19A8] (ab236504) at 1/500 dilution

**Lane 1 :** HEK-293T (human epithelial cell line from embryonic kidney transformed with large T antigen) transfected with pCMV6-ENTRY control, cell lysate

**Lane 2 :** HEK-293T (human epithelial cell line from embryonic kidney transformed with large T antigen) transfected with pCMV6-ENTRY ID2, cell lysate

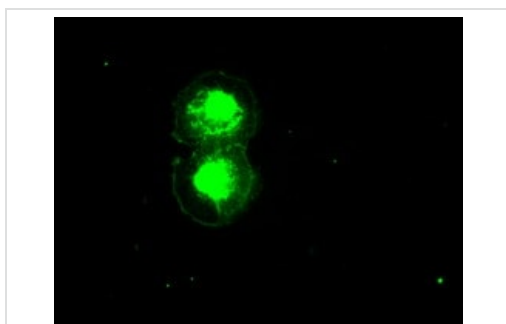
Lysates/proteins at 5 µg per lane.

**Predicted band size:** 14 kDa



Immunohistochemistry (Formalin/PFA-fixed paraffin-embedded sections) - Anti-ID2 antibody [OT19A8] (ab236504)

Paraffin-embedded human liver carcinoma tissue stained for ID2 using ab236504 at 1/50 dilution in immunohistochemical analysis.



Immunohistochemistry (Formalin/PFA-fixed paraffin-embedded sections) - Anti-ID2 antibody [OT19A8] (ab236504)

COS-7 (African green monkey kidney fibroblast-like cell line) cells transiently transfected with pCMV6-ENTRY ID2 stained for ID2 (green) using ab236504 at 1/100 dilution in ICC/IF.

## **Our Abpromise to you: Quality guaranteed and expert technical support**

---

- Replacement or refund for products not performing as stated on the datasheet
- Valid for 12 months from date of delivery
- Response to your inquiry within 24 hours
  
- We provide support in Chinese, English, French, German, Japanese and Spanish
- Extensive multi-media technical resources to help you
- We investigate all quality concerns to ensure our products perform to the highest standards

If the product does not perform as described on this datasheet, we will offer a refund or replacement. For full details of the Abpromise, please visit <https://www.abcam.com/abpromise> or contact our technical team.

## **Terms and conditions**

---

- Guarantee only valid for products bought direct from Abcam or one of our authorized distributors