




Product datasheet

Anti-ID3 antibody [OT18B3] ab236505

10 Images

Overview

Product name	Anti-ID3 antibody [OT18B3]
Description	Mouse monoclonal [OT18B3] to ID3
Host species	Mouse
Tested applications	Suitable for: IHC-P, WB, ICC/IF, Flow Cyt
Species reactivity	Reacts with: Human Predicted to work with: Mouse, Rat, Cow, Dog 
Immunogen	Recombinant full length protein corresponding to Human ID3 aa 1-119. (NP_002158) produced in HEK-293T cells. Sequence: MKALSPVRGCYEAVCCLSERSLAIARGRGKGPAAEEP LSLLDDMNHCYSR LRELVPGVPRGTQLSQVEILQRVIDYILDQLQVLAEPAP GPPDGPHLPIQ TAE LTP ELVISNDKRSFCH Database link: Q02535  Run BLAST with  Run BLAST with
Positive control	WB: HEK-293T transfected with pCMV6-ENTRY ID3 cDNA, whole cell lysate. IHC-P: Human colon, kidney, liver, ovary, thyroid and prostate tissue. ICC/IF: COS-7 cells transiently transfected with pCMV6-ENTRY ID3 cDNA. Flow: HeLa and Jurkat cells.
General notes	Clone OT18B3 (formerly 8B3).

Properties

Form	Liquid
Storage instructions	Shipped at 4°C. Store at +4°C short term (1-2 weeks). Upon delivery aliquot. Store at -20°C long term. Avoid freeze / thaw cycle.
Storage buffer	pH: 7.30 Preservative: 0.02% Sodium azide Constituents: PBS, 1% BSA, 50% Glycerol
Purity	Affinity purified
Purification notes	Purified from cell culture supernatant.

Clonality	Monoclonal
Clone number	OT18B3
Isotype	IgG1

Applications

Our [Abpromise guarantee](#) covers the use of **ab236505** in the following tested applications.

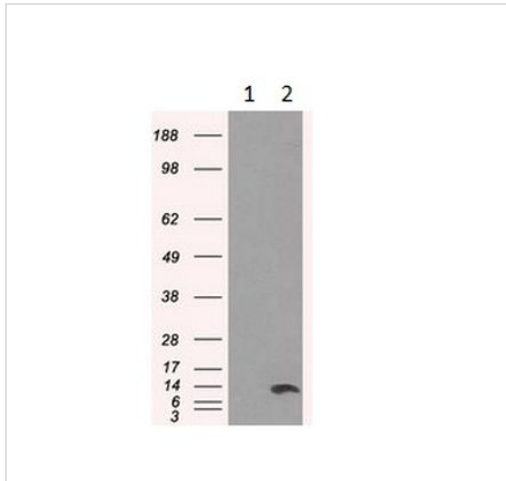
The application notes include recommended starting dilutions; optimal dilutions/concentrations should be determined by the end user.

Application	Abreviews	Notes
IHC-P		1/50. Heat-induced epitope retrieval by 10 mM citric buffer, pH 6.0, 100°C for 10 minutes.
WB		1/500. Predicted molecular weight: 13 kDa.
ICC/IF		1/100.
Flow Cyt		1/100.

Target

Function	ID (inhibitor of DNA binding) HLH proteins lack a basic DNA-binding domain but are able to form heterodimers with other HLH proteins, thereby inhibiting DNA binding. ID-3 inhibits the binding of E2A-containing protein complexes to muscle creatine kinase E-box enhancer. May inhibit other transcription factors.
Tissue specificity	Expressed abundantly in lung, kidney and adrenal gland, but not in adult brain.
Sequence similarities	Contains 1 basic helix-loop-helix (bHLH) domain.
Cellular localization	Nucleus.

Images



Western blot - Anti-ID3 antibody [OTI8B3]
(ab236505)

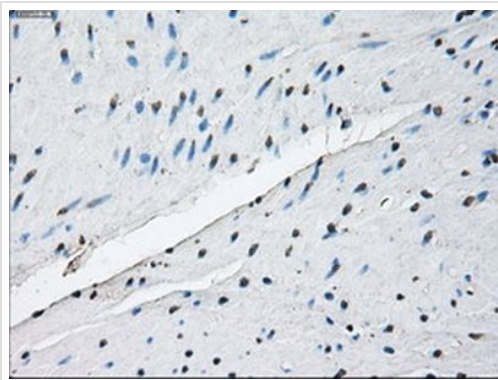
All lanes : Anti-ID3 antibody [OTI8B3] (ab236505) at 1/500 dilution

Lane 1 : HEK-293T (Human epithelial cell line from embryonic kidney transformed with large T antigen) transfected with pCMV6-ENTRY control cDNA, whole cell lysate

Lane 2 : HEK-293T (Human epithelial cell line from embryonic kidney transformed with large T antigen) transfected with pCMV6-ENTRY ID3 cDNA, whole cell lysate

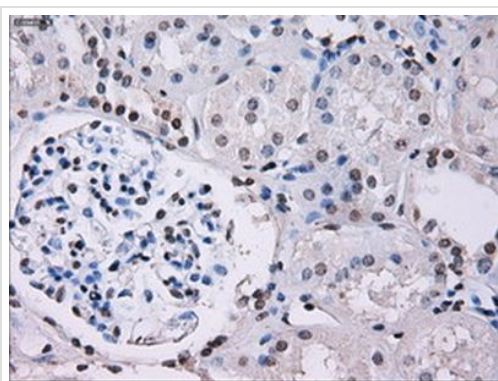
Lysates/proteins at 5 µg per lane.

Predicted band size: 13 kDa



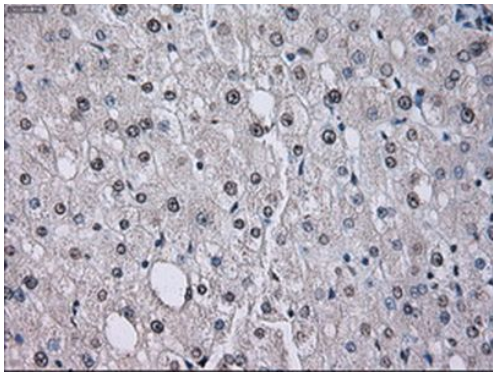
Immunohistochemistry (Formalin/PFA-fixed paraffin-embedded sections) - Anti-ID3 antibody [OTI8B3]
(ab236505)

Paraffin-embedded human colon tissue stained for ID3 using ab236505 at 1/50 dilution in immunohistochemical analysis.



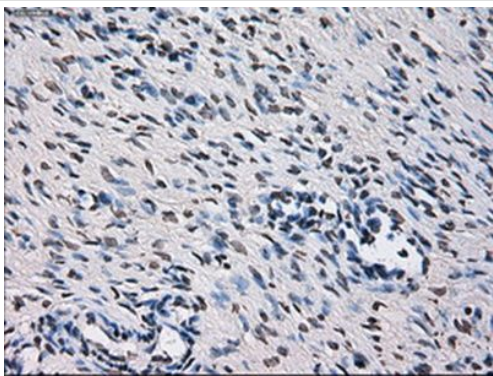
Immunohistochemistry (Formalin/PFA-fixed paraffin-embedded sections) - Anti-ID3 antibody [OTI8B3]
(ab236505)

Paraffin-embedded human kidney tissue stained for ID3 using ab236505 at 1/50 dilution in immunohistochemical analysis.



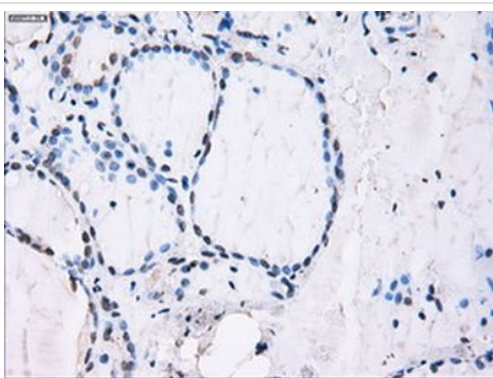
Immunohistochemistry (Formalin/PFA-fixed paraffin-embedded sections) - Anti-ID3 antibody [OT18B3] (ab236505)

Paraffin-embedded human liver tissue stained for ID3 using ab236505 at 1/50 dilution in immunohistochemical analysis.



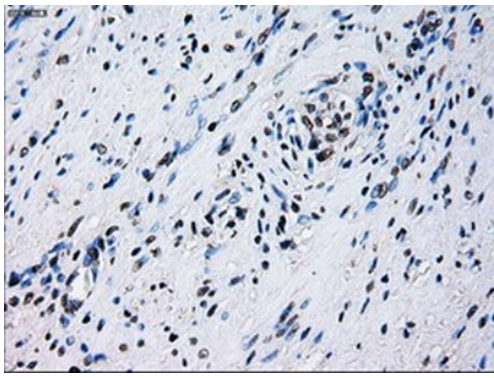
Immunohistochemistry (Formalin/PFA-fixed paraffin-embedded sections) - Anti-ID3 antibody [OT18B3] (ab236505)

Paraffin-embedded human ovary tissue stained for ID3 using ab236505 at 1/50 dilution in immunohistochemical analysis.



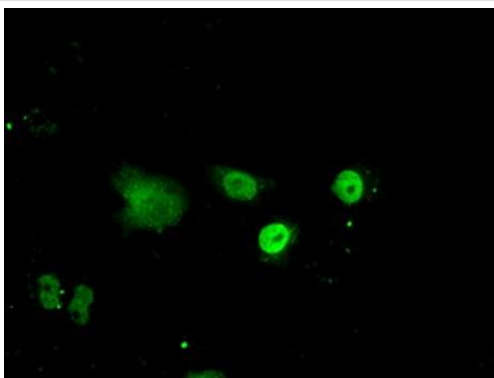
Immunohistochemistry (Formalin/PFA-fixed paraffin-embedded sections) - Anti-ID3 antibody [OT18B3] (ab236505)

Paraffin-embedded human thyroid tissue stained for ID3 using ab236505 at 1/50 dilution in immunohistochemical analysis.



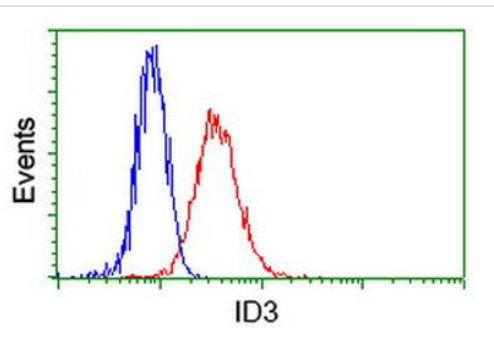
Immunohistochemistry (Formalin/PFA-fixed paraffin-embedded sections) - Anti-ID3 antibody [OT18B3] (ab236505)

Paraffin-embedded human prostate tissue stained for ID3 using ab236505 at 1/50 dilution in immunohistochemical analysis.



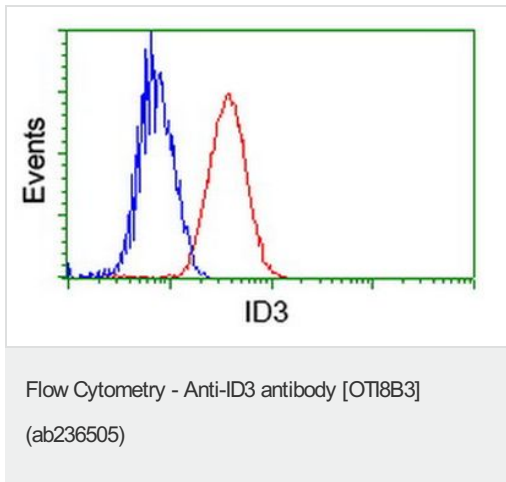
Immunocytochemistry/ Immunofluorescence - Anti-ID3 antibody [OT18B3] (ab236505)

COS-7 (African green monkey kidney fibroblast-like cell line) cells transiently transfected with pCMV6-ENTRY ID3 cDNA stained for ID3 (green) using ab236505 at 1/100 dilution in ICC/IF.



Flow Cytometry - Anti-ID3 antibody [OT18B3] (ab236505)

Flow cytometric analysis of HeLa (Human epithelial cell line from cervix adenocarcinoma) cells labeling ID3 with ab236505 at 1/100 dilution (red) compared to a negative control antibody (blue).



Flow cytometric analysis of Jurkat (Human T cell leukemia cell line from peripheral blood) cells labeling ID3 with ab236505 at 1/100 dilution (red) compared to a negative control antibody (blue).

Please note: All products are "FOR RESEARCH USE ONLY. NOT FOR USE IN DIAGNOSTIC PROCEDURES"

Our Abpromise to you: Quality guaranteed and expert technical support

- Replacement or refund for products not performing as stated on the datasheet
- Valid for 12 months from date of delivery
- Response to your inquiry within 24 hours
- We provide support in Chinese, English, French, German, Japanese and Spanish
- Extensive multi-media technical resources to help you
- We investigate all quality concerns to ensure our products perform to the highest standards

If the product does not perform as described on this datasheet, we will offer a refund or replacement. For full details of the Abpromise, please visit <https://www.abcam.com/abpromise> or contact our technical team.

Terms and conditions

- Guarantee only valid for products bought direct from Abcam or one of our authorized distributors