

Product datasheet

Anti-IDH1 antibody ab137568

6 Images

Overview

Product name	Anti-IDH1 antibody
Description	Rabbit polyclonal to IDH1
Host species	Rabbit
Tested applications	Suitable for: IHC-P, WB
Species reactivity	Reacts with: Mouse, Rat, Human
Immunogen	Recombinant fragment corresponding to Human IDH1 aa 30-337.
Positive control	WB: A431, HepG2, JC, or C2C12 cell lysates IHC-P: Human Colon carcinoma tissue; Mouse brain tissue; Rat duodenum tissue.
General notes	Keep as concentrated solution. This product was previously labelled as Isocitrate dehydrogenase

Reproducibility is key to advancing scientific discovery and accelerating scientists' next breakthrough.

Abcam is leading the way with our range of recombinant antibodies, knockout-validated antibodies and knockout cell lines, all of which support improved reproducibility.

We are also planning to innovate the way in which we present recommended applications and species on our product datasheets, so that only applications & species that have been tested in our own labs, our suppliers or by selected trusted collaborators are covered by our Abpromise™ guarantee.

In preparation for this, we have started to update the applications & species that this product is Abpromise guaranteed for.

We are also updating the applications & species that this product has been “predicted to work with,” however this information is not covered by our Abpromise guarantee.

Applications & species from publications and Abreviews that have not been tested in our own labs or in those of our suppliers are not covered by the Abpromise guarantee.

Please check that this product meets your needs before purchasing. If you have any questions, special requirements or concerns, please send us an inquiry and/or contact our Support team ahead of purchase. Recommended alternatives for this product can be found below, as well as customer reviews and Q&As.

Properties

Form	Liquid
Storage instructions	Shipped at 4°C. Upon delivery aliquot and store at -20°C or -80°C. Avoid repeated freeze / thaw cycles.
Storage buffer	pH: 7.00 Preservative: 0.025% Proclin 300 Constituents: 79% PBS, 20% Glycerol (glycerin, glycerine)
Purity	Immunogen affinity purified
Clonality	Polyclonal
Isotype	IgG

Applications

Our [Abpromise guarantee](#) covers the use of **ab137568** in the following tested applications.

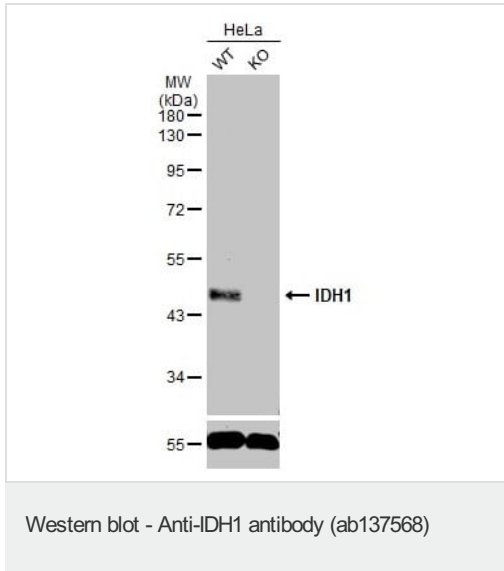
The application notes include recommended starting dilutions; optimal dilutions/concentrations should be determined by the end user.

Application	Abreviews	Notes
IHC-P		1/100 - 1/1000. Perform heat mediated antigen retrieval before commencing with IHC staining protocol. Suggested antigen retrieval using heat mediated 10mM citrate buffer (pH6.0) or Tris-EDTA buffer (pH8.0).
WB		1/500 - 1/3000. Detects a band of approximately 47 kDa (predicted molecular weight: 46 kDa).

Target

Involvement in disease	Glioma Genetic variations are associated with cartilaginous tumors such as enchondroma or chondrosarcoma. Mutations of Arg-132 to Cys, Gly or His abolish the conversion of isocitrate to alpha-ketoglutarate. Instead, alpha-ketoglutarate is converted to R(-)-2-hydroxyglutarate.
Sequence similarities	Belongs to the isocitrate and isopropylmalate dehydrogenases family.
Post-translational modifications	Acetylation at Lys-374 dramatically reduces catalytic activity.
Cellular localization	Cytoplasm. Peroxisome.

Images



All lanes : Anti-IDH1 antibody (ab137568) at 1/500 dilution

Lane 1 : Wild-type HeLa whole cell lysate

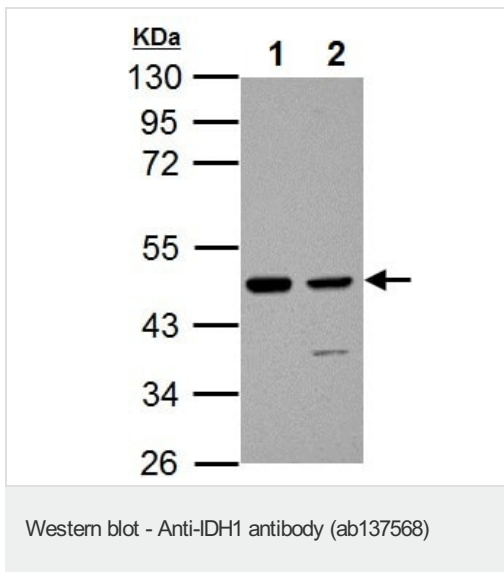
Lane 2 : IDH1 knockout HeLa whole cell lysate

Lysates/proteins at 30 µg per lane.

Secondary

All lanes : HRP-conjugated anti-rabbit IgG

Predicted band size: 46 kDa



All lanes : Anti-IDH1 antibody (ab137568) at 1/1000 dilution

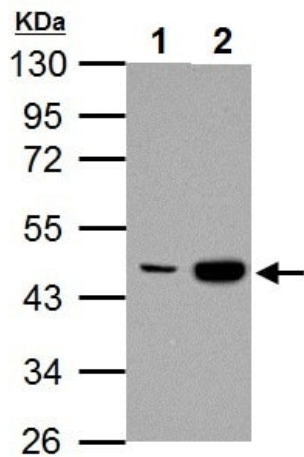
Lane 1 : JC whole cell lysate

Lane 2 : C2C12 whole cell lysate

Lysates/proteins at 30 µg per lane.

Predicted band size: 46 kDa

10% SDS PAGE



Western blot - Anti-IDH1 antibody (ab137568)

All lanes : Anti-IDH1 antibody (ab137568) at 1/1000 dilution

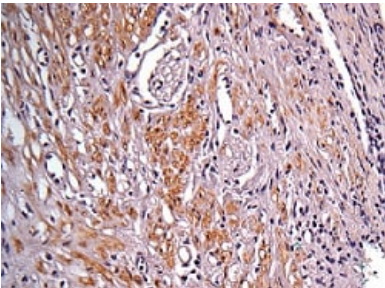
Lane 1 : A431 whole cell lysate

Lane 2 : HepG2 whole cell lysate

Lysates/proteins at 30 μ g per lane.

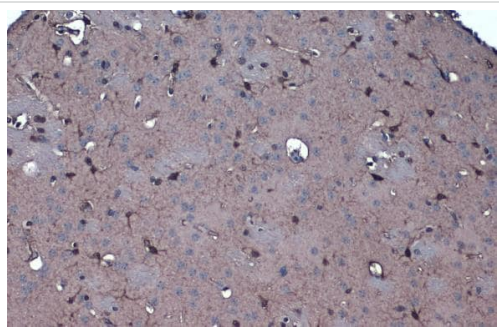
Predicted band size: 46 kDa

10% SDS PAGE



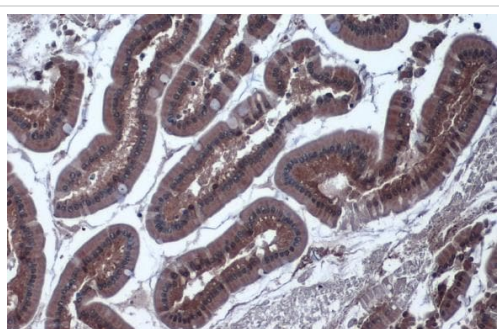
Immunohistochemistry (Formalin/PFA-fixed paraffin-embedded sections) - Anti-IDH1 antibody (ab137568)

Immunohistochemical analysis of paraffin embedded human colon carcinoma, labelling IDH1 with ab137568 at 1/100 dilution.



Immunohistochemistry (Formalin/PFA-fixed paraffin-embedded sections) - Anti-IDH1 antibody (ab137568)

Immunohistochemical analysis of paraffin embedded mouse brain tissue labelling IDH1 with ab137568 at 1/1000 dilution. Antigen retrieval was performed with citrate buffer, pH 6.0, 15 minutes.



Immunohistochemistry (Formalin/PFA-fixed paraffin-embedded sections) - Anti-IDH1 antibody (ab137568)

Immunohistochemical analysis of paraffin embedded rat duodenum tissue labelling IDH1 with ab137568 at 1/1000 dilution. Antigen retrieval was performed with citrate buffer, pH 6.0, 15 minutes.

Please note: All products are "FOR RESEARCH USE ONLY. NOT FOR USE IN DIAGNOSTIC PROCEDURES"

Our Abpromise to you: Quality guaranteed and expert technical support

- Replacement or refund for products not performing as stated on the datasheet
- Valid for 12 months from date of delivery
- Response to your inquiry within 24 hours
- We provide support in Chinese, English, French, German, Japanese and Spanish
- Extensive multi-media technical resources to help you
- We investigate all quality concerns to ensure our products perform to the highest standards

If the product does not perform as described on this datasheet, we will offer a refund or replacement. For full details of the Abpromise, please visit <https://www.abcam.com/abpromise> or contact our technical team.

Terms and conditions

- Guarantee only valid for products bought direct from Abcam or one of our authorized distributors