




## Product datasheet

# Anti-IER5 antibody ab59133

★★★★★ 1 Abreviews 1 References 1 Image

### Overview

<b>Product name</b>	Anti-IER5 antibody
<b>Description</b>	Goat polyclonal to IER5
<b>Host species</b>	Goat
<b>Tested applications</b>	<b>Suitable for:</b> WB
<b>Species reactivity</b>	<p><b>Predicted to work with:</b> Human </p>
<b>Immunogen</b>	<p>Synthetic peptide:            C-QPPSGGEDDDAEE            , corresponding to internal sequence amino acids 248-260 of Human IER5</p> <p style="text-align: right;">  <a href="#">Run BLAST with</a>                 <a href="#">Run BLAST with</a> </p>

### Properties

<b>Form</b>	Liquid
<b>Storage instructions</b>	Shipped at 4°C. Upon delivery aliquot and store at -20°C or -80°C. Avoid repeated freeze / thaw cycles.
<b>Storage buffer</b>	<p>pH: 7.30            Preservative: 0.02% Sodium azide            Constituents: 0.5% Tris buffered saline, 0.5% BSA</p>
<b>Purity</b>	Immunogen affinity purified
<b>Purification notes</b>	Purified from goat serum by ammonium sulphate precipitation followed by antigen affinity chromatography using the immunizing peptide.
<b>Clonality</b>	Polyclonal
<b>Isotype</b>	IgG

### Applications

Our [Abpromise guarantee](#) covers the use of **ab59133** in the following tested applications.

The application notes include recommended starting dilutions; optimal dilutions/concentrations should be determined by the end user.

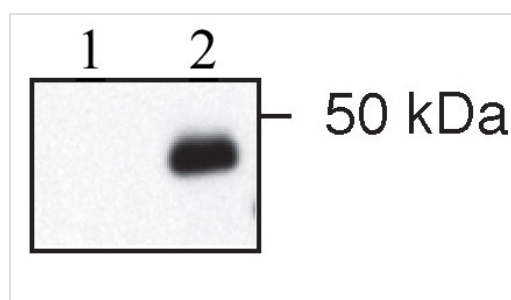
Application	Abreviews	Notes
WB	★★★★☆	1/500 - 1/1000. Predicted molecular weight: 34 kDa.

## Target

### Relevance

IER5 is a similar protein to other immediate early response proteins. In mouse, a similar protein may play an important role in mediating the cellular response to mitogenic signals.

## Images



Western blot - Anti-IER5 antibody (ab59133)

This image is courtesy of an anonymous Abreview

**All lanes :** Anti-IER5 antibody (ab59133)

**Lane 1 :** Human H1299 cell lysate transfected with empty vector

**Lane 2 :** Human H1299 cells lysate overexpressing IER5

Lysates/proteins at 10 µg per lane.

### Secondary

**All lanes :** HRP conjugated rabbit polyclonal to goat IgG at 1/1000 dilution

**Predicted band size:** 34 kDa

**Observed band size:** 45 kDa

[why is the actual band size different from the predicted?](#)

**Please note:** All products are "FOR RESEARCH USE ONLY. NOT FOR USE IN DIAGNOSTIC PROCEDURES"

## Our Abpromise to you: Quality guaranteed and expert technical support

- Replacement or refund for products not performing as stated on the datasheet
- Valid for 12 months from date of delivery
- Response to your inquiry within 24 hours
- We provide support in Chinese, English, French, German, Japanese and Spanish
- Extensive multi-media technical resources to help you
- We investigate all quality concerns to ensure our products perform to the highest standards

If the product does not perform as described on this datasheet, we will offer a refund or replacement. For full details of the Abpromise, please visit <https://www.abcam.com/abpromise> or contact our technical team.

## Terms and conditions

---

- Guarantee only valid for products bought direct from Abcam or one of our authorized distributors