



Product datasheet

Anti-Ifi204 antibody ab228512

1 Image

Overview

Product name	Anti-ifi204 antibody
Description	Rabbit polyclonal to Ifi204
Host species	Rabbit
Tested applications	Suitable for: WB
Species reactivity	Reacts with: Mouse
Immunogen	<p>Recombinant fragment corresponding to Mouse Ifi204 aa 1-250. Sequence:</p> <p>MVNEYKRIVLLRGLKCINKHYFSLFKSLLARDLNLERDNQE QYTTIQIAN MMEEKFPADSGLGKLIAFCEEVPALRKRAEILKKERSEVT GETSLEKNGQ EAGPATPTSTTSHMLASERGETSATQEETSTAQAGTSTA QARTSTAQAGT STAQKRKIMREEETGVKKSAAKEPDQPPCCEPTARCC SPILHSSSSAS SNIPSAKNQKSQPQNIPRGAVLHSEPLTVMVLTATDPF EYESPEHEVK</p> <p>Database link: P0DOV2</p> <p style="text-align: right;">  Run BLAST with  Run BLAST with </p>
Positive control	WB: EL4 lysate; Mouse kidney lysate.
General notes	<p>Reproducibility is key to advancing scientific discovery and accelerating scientists' next breakthrough.</p> <p>Abcam is leading the way with our range of recombinant antibodies, knockout-validated antibodies and knockout cell lines, all of which support improved reproducibility.</p> <p>We are also planning to innovate the way in which we present recommended applications and species on our product datasheets, so that only applications & species that have been tested in our own labs, our suppliers or by selected trusted collaborators are covered by our Abpromise™ guarantee.</p> <p>In preparation for this, we have started to update the applications & species that this product is Abpromise guaranteed for.</p> <p>We are also updating the applications & species that this product has been “predicted to work</p>

with," however this information is not covered by our Abpromise guarantee.

Applications & species from publications and Abreviews that have not been tested in our own labs or in those of our suppliers are not covered by the Abpromise guarantee.

Please check that this product meets your needs before purchasing. If you have any questions, special requirements or concerns, please send us an inquiry and/or contact our Support team ahead of purchase. Recommended alternatives for this product can be found below, as well as customer reviews and Q&As.

Properties

Form	Liquid
Storage instructions	Shipped at 4°C. Store at +4°C short term (1-2 weeks). Upon delivery aliquot. Store at -20°C long term. Avoid freeze / thaw cycle.
Storage buffer	Preservative: 0.05% Sodium azide Constituents: PBS, 0.05% BSA
Purity	Protein A purified
Clonality	Polyclonal
Isotype	IgG

Applications

Our [Abpromise guarantee](#) covers the use of **ab228512** in the following tested applications.

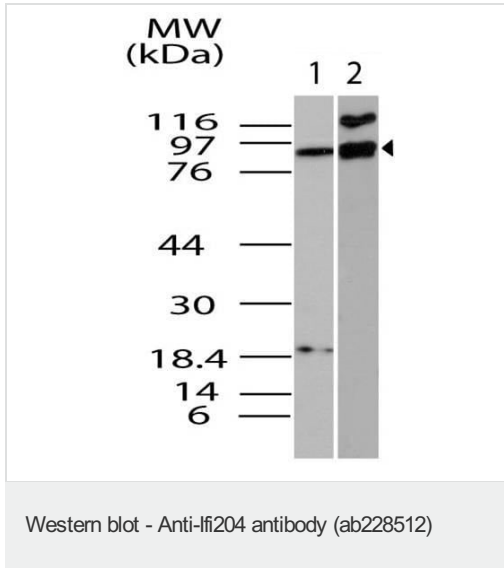
The application notes include recommended starting dilutions; optimal dilutions/concentrations should be determined by the end user.

Application	Abreviews	Notes
WB		Use a concentration of 3 - 5 µg/ml. Predicted molecular weight: 69 kDa.

Target

Relevance	Function: Inhibits the transcription of ribosomal RNA. May inhibit DNA binding by UBTF. Inhibits cell growth via TP53/p53 and RB1-dependent and independent pathways. Acts as a coactivator of RUNX2 during osteogenesis. May be involved in macrophage differentiation. Enables skeletal muscle and cardiac myocyte differentiation by sequestering Id proteins in the cytosol and promoting their ubiquitination and subsequent degradation. Tissue specificity: Present in osteoblasts (at protein level). Similarity: Belongs to the HIN-200 family. Contains 1 DAPIN domain. Contains 2 HIN-200 domains. Domain: The 2 HIN-200 domains are able to interact with RUNX2.
Cellular localization	Nucleus. Nucleus > nucleolus. Cytoplasm. Nuclear in proliferating cells, translocates to cytosol during cell differentiation.

Images



All lanes : Anti-lfi204 antibody (ab228512) at 3 µg/ml

Lane 1 : Mouse kidney lysate

Lane 2 : EL4 lysate

Predicted band size: 69 kDa

Please note: All products are "FOR RESEARCH USE ONLY. NOT FOR USE IN DIAGNOSTIC PROCEDURES"

Our Abpromise to you: Quality guaranteed and expert technical support

- Replacement or refund for products not performing as stated on the datasheet
- Valid for 12 months from date of delivery
- Response to your inquiry within 24 hours
- We provide support in Chinese, English, French, German, Japanese and Spanish
- Extensive multi-media technical resources to help you
- We investigate all quality concerns to ensure our products perform to the highest standards

If the product does not perform as described on this datasheet, we will offer a refund or replacement. For full details of the Abpromise, please visit <https://www.abcam.com/abpromise> or contact our technical team.

Terms and conditions

- Guarantee only valid for products bought direct from Abcam or one of our authorized distributors