

Product datasheet

Anti-IFI35 antibody ab233415

4 Images

Overview

<b>Product name</b>	Anti-IFI35 antibody
<b>Description</b>	Rabbit polyclonal to IFI35
<b>Host species</b>	Rabbit
<b>Tested applications</b>	<b>Suitable for:</b> ICC/IF, IHC-P, WB
<b>Species reactivity</b>	<b>Reacts with:</b> Human, Pig
<b>Immunogen</b>	Recombinant fragment (His-T7-tag) corresponding to Human IFI35 aa 2-286. Two N-terminal tags. Expressed in E.coli. Sequence:  SAPLDAALHALQEEQARLKMRLWDLQQLRKELGDSP KDKVPFSVPKIPLV FRGHTQQDPEVPKSLVSNLRIHCPLLAGSALITFDDPK VAEQVLQQKEHT INMEECRLRVQVQPLELPMVTTIQMSSQLSGRRVLVTG FPASLRLSEEL LDKLEIFFGKTRNGGGDVDVRELLPGSVMLGFARDGV AQRLCQIGQFTVP LGGQQVPLRVSPYVNGEIQKAEIRSQPVPRSVLVLNIP DILDGPELHDVL EIHFAQPTRGGGEVEALTVVPQQQQGLAVFTSESG

Database link: [P80217](#)

 [Run BLAST with](#)

 [Run BLAST with](#)

<b>Positive control</b>	WB: Recombinant human IFI35 protein; Human lung lysate; HeLa whole cell lysate ( <a href="#">ab150035</a> ); Pig liver lysate. IHC-P: Human liver tissue. ICC/IF: HeLa cells.
-------------------------	---

Properties

<b>Form</b>	Liquid
<b>Storage instructions</b>	Shipped at 4°C. Store at +4°C short term (1-2 weeks). Upon delivery aliquot. Store at -20°C long term. Avoid freeze / thaw cycle.
<b>Storage buffer</b>	pH: 7.40 Preservative: 0.02% Sodium azide Constituents: PBS, 50% Glycerol

<b>Purity</b>	Immunogen affinity purified
<b>Purification notes</b>	Antigen-specific affinity chromatography followed by Protein A affinity chromatography.
<b>Clonality</b>	Polyclonal
<b>Isotype</b>	IgG

## Applications

Our [Abpromise guarantee](#) covers the use of **ab233415** in the following tested applications.

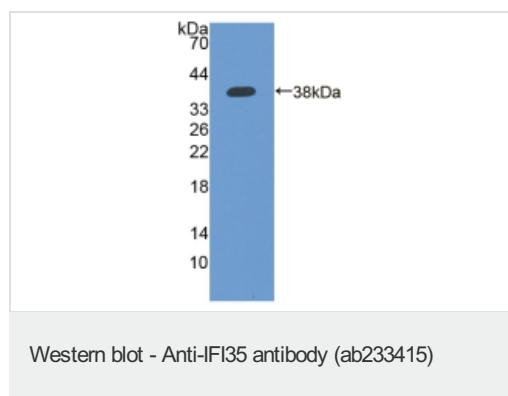
The application notes include recommended starting dilutions; optimal dilutions/concentrations should be determined by the end user.

Application	Abreviews	Notes
ICC/IF		Use a concentration of 5 - 20 µg/ml.
IHC-P		Use a concentration of 5 - 20 µg/ml.
WB		Use a concentration of 0.2 - 2 µg/ml.

## Target

<b>Function</b>	Not yet known.
<b>Tissue specificity</b>	In a wide range of cell types, including fibroblasts, macrophages, and epithelial cells.
<b>Sequence similarities</b>	Belongs to the NMI family.
<b>Cellular localization</b>	Nucleus. Nuclear following IFN treatment.

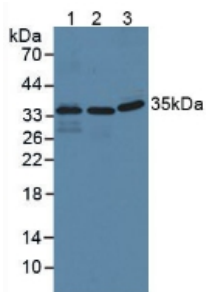
## Images



Anti-IFI35 antibody (ab233415) at 2 µg/ml + Recombinant human IFI35 protein

### Secondary

HRP-Linked Guinea pig anti-Rabbit at 1/2000 dilution



Western blot - Anti-IFI35 antibody (ab233415)

**All lanes** : Anti-IFI35 antibody (ab233415) at 2 µg/ml

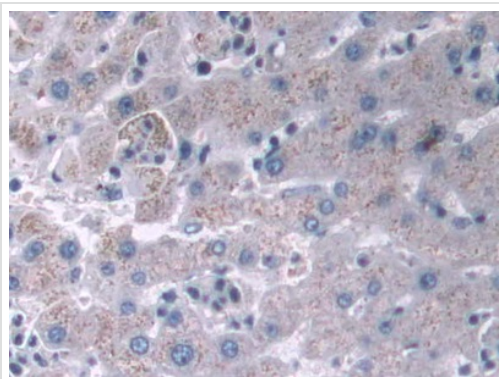
**Lane 1** : Human lung lysate

**Lane 2** : HeLa (human epithelial cell line from cervix adenocarcinoma) cell lysate

**Lane 3** : Pig liver lysate

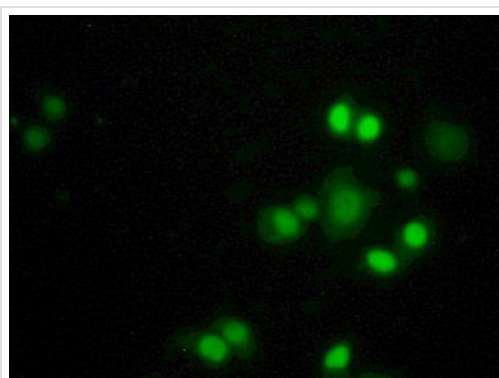
#### Secondary

**All lanes** : HRP-Linked Guinea pig anti-Rabbit at 1/2000 dilution



Immunohistochemistry (Formalin/PFA-fixed paraffin-embedded sections) - Anti-IFI35 antibody (ab233415)

Formalin-fixed, paraffin-embedded human liver tissue stained for IFI35 using ab233415 at 10 µg/ml in immunohistochemical analysis. DAB staining.



Immunocytochemistry/ Immunofluorescence - Anti-IFI35 antibody (ab233415)

HeLa (human epithelial cell line from cervix adenocarcinoma) cells stained for IFI35 (green) using ab233415 at 20 µg/ml in ICC/IF. FITC staining.

## **Our Abpromise to you: Quality guaranteed and expert technical support**

---

- Replacement or refund for products not performing as stated on the datasheet
- Valid for 12 months from date of delivery
- Response to your inquiry within 24 hours
  
- We provide support in Chinese, English, French, German, Japanese and Spanish
- Extensive multi-media technical resources to help you
- We investigate all quality concerns to ensure our products perform to the highest standards

If the product does not perform as described on this datasheet, we will offer a refund or replacement. For full details of the Abpromise, please visit <https://www.abcam.com/abpromise> or contact our technical team.

## **Terms and conditions**

---

- Guarantee only valid for products bought direct from Abcam or one of our authorized distributors