




Product datasheet

Anti-IFIT3/P60 antibody [OT11G1] ab118045

5 Images

Overview

<b>Product name</b>	Anti-IFIT3/P60 antibody [OT11G1]
<b>Description</b>	Mouse monoclonal [OT11G1] to IFIT3/P60
<b>Host species</b>	Mouse
<b>Tested applications</b>	<b>Suitable for:</b> WB, Flow Cyt, ICC/IF
<b>Species reactivity</b>	<b>Reacts with:</b> Human <b>Predicted to work with:</b> Chimpanzee 
<b>Immunogen</b>	Recombinant full length protein corresponding to Human IFIT3/P60 aa 1-490. Produced in HEK-293T cells (NP_001540). Sequence:  MSEVTKNSLEKILPQLKCHFTWNLFKEDSVSRDLEDR VCNQIEFLNTEFK ATMYNLLAYIKHLDGNNEAALECLRQAEELIQQEHADQ AEIRSLVTWGN Y AWVYYHLGRLSDAQIYVDKVKQTCKKFSNPYSIEYSEL DCEEGWTQLKCG RNERAKVCFEKALEEKPNNPEFSSGLAIAMYHLDNHP EKQFSTDVVKQAI ELSPDNQYVKVLLGLKQKMNKEAEGEQFVEEALEKS PCQTDVLRSAKF YRRKGDLDKAIELFQRVLESTPNNGYLYHQGCCYKAK VRQMONTGESEA SGNKEMIEALKQYAMDYSNKALEKGLNPLNAYSDLAE FLETECYQTPFNK EVPDAEKQQSHQRYCNLQKYNGKSEDTAVQHGLEGL SISKKSTDKEEIKD QPQNVSENLLPQNAPNYWYLQGLIHKQNGDLLQAAKC YEKELGRLLRDAP SGIGSIFLSASELEDGSEEMGQGA VSSSPRELLSNSE QLN  Database link: <a href="#">O14879</a>   <a href="#">Run BLAST with</a>  <a href="#">Run BLAST with</a>
<b>Positive control</b>	WB: HepG2, HeLa, A549, COS-7, Jurkat and MCF7 extracts; HEK-293T cells transfected with pCMV6-ENTRY IFIT3/P60 cDNA. ICC/IF: COS-7 (transiently transfected by pCMV6-ENTRY

IFIT3/P60 cDNA) and HT-29 cells. FC: Jurkat cells.

## General notes

Clone OT11G1 (formerly 1G1).

Protein previously labeled as IFIT3.

## Properties

<b>Form</b>	Liquid
<b>Storage instructions</b>	Shipped at 4°C. Store at +4°C short term (1-2 weeks). Upon delivery aliquot. Store at -20°C. Avoid freeze / thaw cycle.
<b>Storage buffer</b>	pH: 7.30 Preservative: 0.02% Sodium azide Constituents: PBS, 50% Glycerol, 1% BSA
<b>Purity</b>	Affinity purified
<b>Purification notes</b>	Purified from cell culture supernatant by affinity chromatography.
<b>Clonality</b>	Monoclonal
<b>Clone number</b>	OT11G1
<b>Isotype</b>	IgG1

## Applications

Our [Abpromise guarantee](#) covers the use of **ab118045** in the following tested applications.

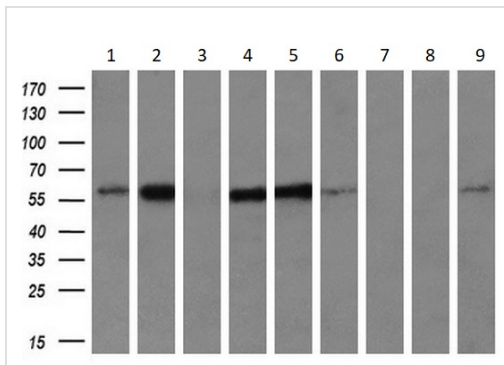
The application notes include recommended starting dilutions; optimal dilutions/concentrations should be determined by the end user.

Application	Abreviews	Notes
WB		1/2000. Predicted molecular weight: 56 kDa.
Flow Cyt		1/100. <a href="#">ab170190</a> - Mouse monoclonal IgG1, is suitable for use as an isotype control with this antibody.
ICC/IF		1/100.

## Target

<b>Sequence similarities</b>	Belongs to the IFIT family. Contains 8 TPR repeats.
------------------------------	--

## Images



Western blot - Anti-IFIT3/P60 antibody [OT11G1] (ab118045)

**All lanes** : Anti-IFIT3/P60 antibody [OT11G1] (ab118045) at 1/200 dilution

**Lane 1** : HepG2 (human liver hepatocellular carcinoma cell line) extracts

**Lane 2** : HeLa (Human epithelial cell line from cervix adenocarcinoma) extracts

**Lane 3** : SVT2 extracts

**Lane 4** : A549 (Human lung carcinoma cell line) extracts

**Lane 5** : COS-7 (African green monkey kidney fibroblast-like cell line) extracts

**Lane 6** : Jurkat (Human T cell leukemia cell line from peripheral blood) extracts

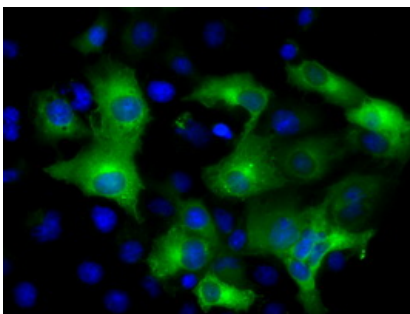
**Lane 7** : MDCK (Canine kidney cell line) extracts

**Lane 8** : PC-12 (Rat adrenal gland pheochromocytoma cell line) extracts

**Lane 9** : MCF7 (Human breast adenocarcinoma cell line) extracts

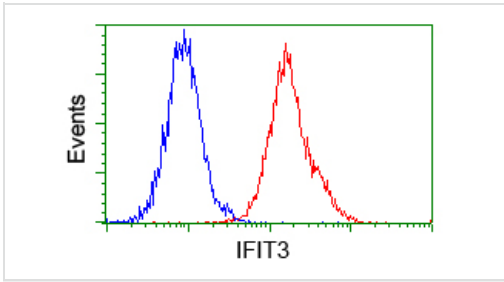
Lysates/proteins at 35 µg per lane.

**Predicted band size:** 56 kDa



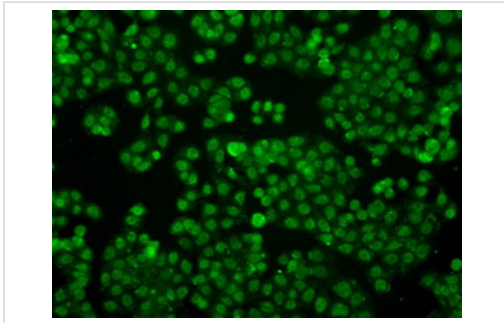
Immunocytochemistry/ Immunofluorescence - Anti-IFIT3/P60 antibody [OT11G1] (ab118045)

pCMV6-ENTRY IFIT3/P60 cDNA transfected COS-7 (African green monkey kidney fibroblast-like cell line) cells stained for IFIT3/P60 using ab118045 at a 1/100 dilution in ICC/IF.



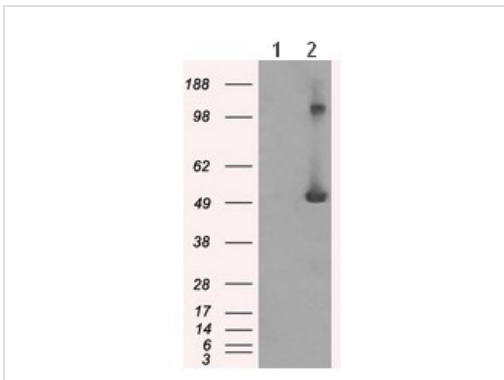
Flow Cytometry - Anti-IFIT3/P60 antibody [OT11G1] (ab118045)

ab118045 at 1/100 dilution staining IFIT3/P60 in Jurkat (Human T cell leukemia cell line from peripheral blood) cells by Flow cytometry (Red) compared to a nonspecific negative control antibody (Blue).



Immunocytochemistry/ Immunofluorescence - Anti-IFIT3/P60 antibody [OT11G1] (ab118045)

HT-29 (Human colorectal adenocarcinoma cell line) cells stained for IFIT3/P60 using ab118045 at a 1/100 dilution in ICC/IF.



Western blot - Anti-IFIT3/P60 antibody [OT11G1] (ab118045)

**All lanes** : Anti-IFIT3/P60 antibody [OT11G1] (ab118045) at 1/2000 dilution

**Lane 1** : HEK-293T (Human epithelial cell line from embryonic kidney transformed with large T antigen) cells, transfected with pCMV6-ENTRY control cDNA

**Lane 2** : HEK-293T cells, transfected with pCMV6-ENTRY IFIT3/P60 cDNA

Lysates/proteins at 5 µg per lane.

**Predicted band size:** 56 kDa

**Please note:** All products are "FOR RESEARCH USE ONLY. NOT FOR USE IN DIAGNOSTIC PROCEDURES"

### Our Promise to you: Quality guaranteed and expert technical support

- Replacement or refund for products not performing as stated on the datasheet
- Valid for 12 months from date of delivery
- Response to your inquiry within 24 hours

- We provide support in Chinese, English, French, German, Japanese and Spanish
- Extensive multi-media technical resources to help you
- We investigate all quality concerns to ensure our products perform to the highest standards

If the product does not perform as described on this datasheet, we will offer a refund or replacement. For full details of the Abpromise, please visit <https://www.abcam.com/abpromise> or contact our technical team.

### **Terms and conditions**

---

- Guarantee only valid for products bought direct from Abcam or one of our authorized distributors