

Product datasheet

Anti-IFT80 antibody ab154933

2 Images

Overview

Product name	Anti-IFT80 antibody
Description	Rabbit polyclonal to IFT80
Host species	Rabbit
Tested applications	Suitable for: WB, IHC-P
Species reactivity	Reacts with: Human Predicted to work with: Mouse, Rat, Cow, Xenopus tropicalis ▲
Immunogen	Recombinant fragment, corresponding to a region within amino acids 114-362 of Human IFT80 (UniProt ID: Q9P2H3).
Positive control	NT2D1 whole cell lysate; AdCA tissue.
General notes	Keep as concentrated solution.

Properties

Form	Liquid
Storage instructions	Shipped at 4°C. Upon delivery aliquot. Store at -20°C or -80°C. Avoid freeze / thaw cycle.
Storage buffer	pH: 7.00 Preservative: 0.01% Thimerosal (merthiolate) Constituents: 1.21% Tris, 0.75% Glycine, 20% Glycerol
Purity	Immunogen affinity purified
Clonality	Polyclonal
Isotype	IgG

Applications

Our [Abpromise guarantee](#) covers the use of **ab154933** in the following tested applications.

The application notes include recommended starting dilutions; optimal dilutions/concentrations should be determined by the end user.

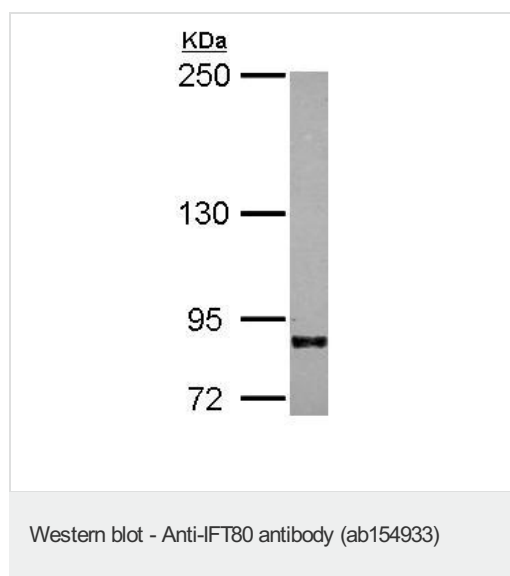
Application	Abreviews	Notes
WB		1/500 - 1/1000. Predicted molecular weight: 88 kDa.

Application	Abreviews	Notes
IHC-P		1/100 - 1/1000. Perform heat mediated antigen retrieval with citrate buffer pH 6 before commencing with IHC staining protocol. Tris-EDTA buffer (pH 8.0) can also be used.

Target

Function	Component of the intraflagellar transport (IFT) complex B, which is essential for the development and maintenance of motile and sensory cilia.
Involvement in disease	Defects in IFT80 are the cause of asphyxiating thoracic dystrophy type 2 (ATD2) [MIM:611263]. An autosomal recessive chondrodysplasia characterized by a severely constricted thoracic cage, short-limbed short stature, and polydactyly. It often leads to death in infancy because of respiratory insufficiency. Retinal degeneration, cystic renal disease and hepatic disease can be present in affected individuals who survive early childhood.
Sequence similarities	Contains 7 WD repeats.
Cellular localization	Cytoplasm. Cytoplasm > cytoskeleton > cilium basal body. Cytoplasm > cytoskeleton > cilium axoneme. Basal body and ciliary axoneme.

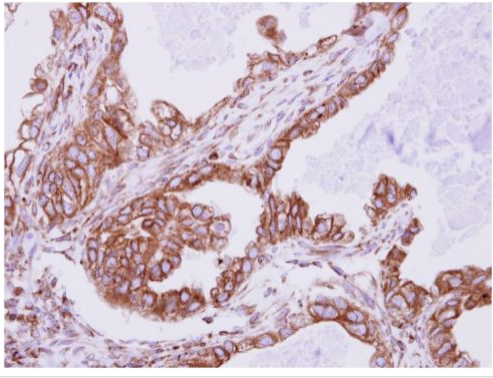
Images



Anti-IFT80 antibody (ab154933) at 1/500 dilution + NT2D1 whole cell lysate at 30 µg

Predicted band size: 88 kDa

5% SDS PAGE



Immunohistochemical analysis of paraffin-embedded Human AdCA tissue labeling IFT80 with ab154933 at 1/500 dilution.

Immunohistochemistry (Formalin/PFA-fixed paraffin-embedded sections) - Anti-IFT80 antibody (ab154933)

Please note: All products are "FOR RESEARCH USE ONLY. NOT FOR USE IN DIAGNOSTIC PROCEDURES"

Our Abpromise to you: Quality guaranteed and expert technical support

- Replacement or refund for products not performing as stated on the datasheet
- Valid for 12 months from date of delivery
- Response to your inquiry within 24 hours

- We provide support in Chinese, English, French, German, Japanese and Spanish
- Extensive multi-media technical resources to help you
- We investigate all quality concerns to ensure our products perform to the highest standards

If the product does not perform as described on this datasheet, we will offer a refund or replacement. For full details of the Abpromise, please visit <https://www.abcam.com/abpromise> or contact our technical team.

Terms and conditions

- Guarantee only valid for products bought direct from Abcam or one of our authorized distributors