

Product datasheet

Anti-IgG antibody [R10Z8E9] ab124055

4 References 1 Image

Overview

Product name	Anti-IgG antibody [R10Z8E9]
Description	Mouse monoclonal [R10Z8E9] to IgG
Host species	Mouse
Specificity	Clone R10Z8E9 appears to be specific to Human IgG (CH2 Domain) and has been demonstrated by ELISA not to recognize IgG from Non Human Primate species (as specified under 'Species Reactivity').
Tested applications	Suitable for: Indirect ELISA
Species reactivity	Reacts with: Human Does not react with: Mouse, Rat, Baboon, Cynomolgus monkey, Rhesus monkey, Common marmoset
Immunogen	Full length protein corresponding to Human IgG.
Positive control	Human IgG
General notes	ab124055 should be stored undiluted.

NB.: This reagent may not be used for the detection of therapeutic antibodies from samples obtained from experimental animals without prior consent by the owner of EP 1 853 921 (F. Hoffmann La Roche AG, Basel, Switzerland) and /or US 7,955,806 (HOFFMANNLA ROCHE, INC., Nutley, NJ).

Properties

Form	Liquid
Storage instructions	Shipped at 4°C. Store at +4°C short term (1-2 weeks). Store at -20°C long term.
Storage buffer	Preservative: 0.09% Sodium azide Constituent: 99% PBS
Purity	Protein G purified
Purification notes	ab124055 was prepared by affinity chromatography on Protein G from tissue culture supernatant.
Clonality	Monoclonal
Clone number	R10Z8E9
Myeloma	NS0
Isotype	IgG1

Applications

Our [Abpromise guarantee](#) covers the use of **ab124055** in the following tested applications.

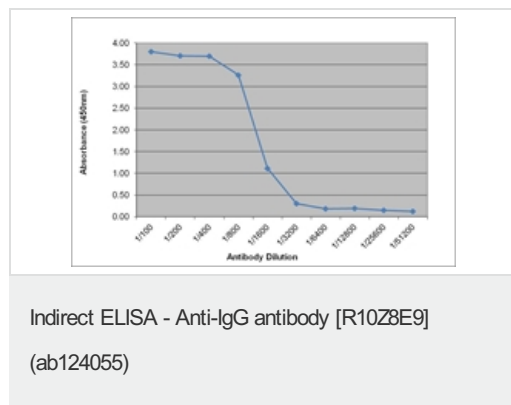
The application notes include recommended starting dilutions; optimal dilutions/concentrations should be determined by the end user.

Application	Abreviews	Notes
Indirect ELISA		Use at an assay dependent concentration.

Target

Cellular localization Secreted

Images



Human IgG detected using ab124055 followed by Rabbit F(ab')₂ anti Mouse IgG:HRP by Indirect ELISA.

Please note: All products are "FOR RESEARCH USE ONLY. NOT FOR USE IN DIAGNOSTIC PROCEDURES"

Our Abpromise to you: Quality guaranteed and expert technical support

- Replacement or refund for products not performing as stated on the datasheet
- Valid for 12 months from date of delivery
- Response to your inquiry within 24 hours
- We provide support in Chinese, English, French, German, Japanese and Spanish
- Extensive multi-media technical resources to help you
- We investigate all quality concerns to ensure our products perform to the highest standards

If the product does not perform as described on this datasheet, we will offer a refund or replacement. For full details of the Abpromise, please visit <https://www.abcam.com/abpromise> or contact our technical team.

Terms and conditions

- Guarantee only valid for products bought direct from Abcam or one of our authorized distributors