

Product datasheet

Biotin Anti-IGLC1 antibody [RM127] ab224180

Recombinant

4 Images

Overview

Product name	Biotin Anti-IGLC1 antibody [RM127]
Description	Biotin Rabbit monoclonal [RM127] to IGLC1
Host species	Rabbit
Conjugation	Biotin
Specificity	ab224180 reacts to the lambda light chain of human immunoglobulins.
Tested applications	Suitable for: ELISA, IHC
Species reactivity	Reacts with: Human Does not react with: Mouse, Rat, Goat
Immunogen	Full length native protein (purified) corresponding to Human IGLC1.
General notes	<p>Reproducibility is key to advancing scientific discovery and accelerating scientists' next breakthrough.</p> <p>Abcam is leading the way with our range of recombinant antibodies, knockout-validated antibodies and knockout cell lines, all of which support improved reproducibility.</p> <p>We are also planning to innovate the way in which we present recommended applications and species on our product datasheets, so that only applications & species that have been tested in our own labs, our suppliers or by selected trusted collaborators are covered by our Abpromise™ guarantee.</p> <p>In preparation for this, we have started to update the applications & species that this product is Abpromise guaranteed for.</p> <p>We are also updating the applications & species that this product has been “predicted to work with,” however this information is not covered by our Abpromise guarantee.</p> <p>Applications & species from publications and Abreviews that have not been tested in our own labs or in those of our suppliers are not covered by the Abpromise guarantee.</p> <p>Please check that this product meets your needs before purchasing. If you have any questions, special requirements or concerns, please send us an inquiry and/or contact our Support team ahead of purchase. Recommended alternatives for this product can be found below, as well as customer reviews and Q&As.</p>

Properties

Form	Liquid
Storage instructions	Shipped at 4°C. Store at +4°C short term (1-2 weeks). Upon delivery aliquot. Store at -20°C. Stable for 12 months at -20°C. Store In the Dark.
Storage buffer	Preservative: 0.09% Sodium azide Constituents: 1% BSA, 50% Glycerol (glycerin, glycerine), PBS
Purity	Protein A purified
Purification notes	ab224180 was purified from an animal origin-free culture supernatant.
Clonality	Monoclonal
Clone number	RM127
Isotype	IgG

Applications

Our [Abpromise guarantee](#) covers the use of **ab224180** in the following tested applications.

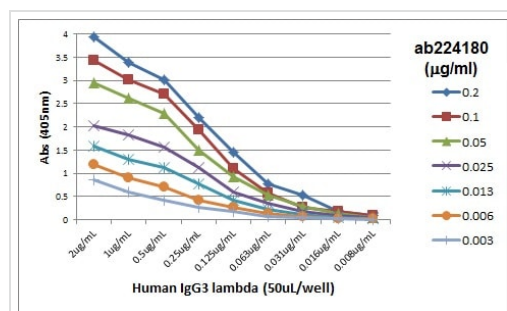
The application notes include recommended starting dilutions; optimal dilutions/concentrations should be determined by the end user.

Application	Abreviews	Notes
ELISA		Use a concentration of 0.05 - 0.2 µg/ml.
IHC		Use a concentration of 0.5 - 2 µg/ml.

Target

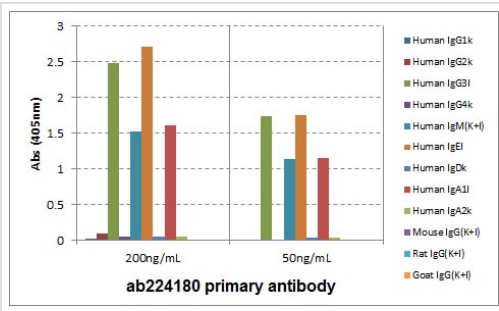
Cellular localization Extracellular region, plasma membrane.

Images



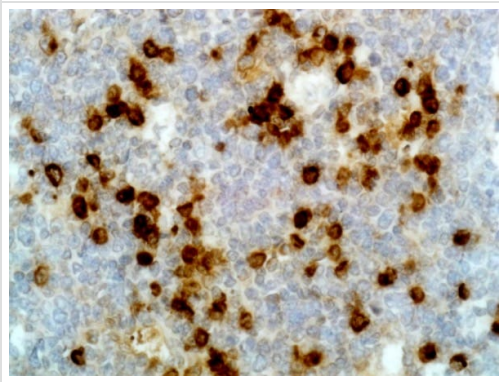
A titer ELISA using ab224180. The plate was coated with different amounts of human IgG3λ. A serial dilution of ab224180 was used as the primary antibody. An alkaline phosphatase conjugated Anti-Rabbit IgG was used as the secondary antibody.

ELISA - Biotin Anti-IGLC1 antibody [RM127]
(ab224180)



ELISA of human immunoglobulins shows ab224180 reacts to the lambda light chain of human immunoglobulins. No cross reactivity with the kappa light chain, mouse IgG, rat IgG, or goat IgG. The plate was coated with 50 ng/well of different immunoglobulins. 200 ng/mL or 50 ng/mL of ab224180 was used as the primary antibody. An alkaline phosphatase conjugated Anti-Rabbit IgG was used as the secondary antibody.

ELISA - Biotin Anti-IgLC1 antibody [RM127] (ab224180)



Human tonsil tissue stained for IGLC1 using ab224180 at 2 µg/ml in immunohistochemical analysis.

Immunohistochemistry - Biotin Anti-IgLC1 antibody [RM127] (ab224180)

Why choose a recombinant antibody?

- Research with confidence**
Consistent and reproducible results
- Long-term and scalable supply**
Recombinant technology
- Success from the first experiment**
Confirmed specificity
- Ethical standards compliant**
Animal-free production

Biotin Anti-IgLC1 antibody [RM127] (ab224180)

Please note: All products are "FOR RESEARCH USE ONLY. NOT FOR USE IN DIAGNOSTIC PROCEDURES"

Our Abpromise to you: Quality guaranteed and expert technical support

- Replacement or refund for products not performing as stated on the datasheet
- Valid for 12 months from date of delivery
- Response to your inquiry within 24 hours

- We provide support in Chinese, English, French, German, Japanese and Spanish
- Extensive multi-media technical resources to help you
- We investigate all quality concerns to ensure our products perform to the highest standards

If the product does not perform as described on this datasheet, we will offer a refund or replacement. For full details of the Abpromise, please visit <https://www.abcam.com/abpromise> or contact our technical team.

Terms and conditions

- Guarantee only valid for products bought direct from Abcam or one of our authorized distributors