

Product datasheet

Anti-IGLC2 antibody [5E12B9] ab233563

4 Images

Overview

| | |
|----------------------------|--|
| Product name | Anti-IGLC2 antibody [5E12B9] |
| Description | Mouse monoclonal [5E12B9] to IGLC2 |
| Host species | Mouse |
| Tested applications | Suitable for: WB, IHC-P |
| Species reactivity | Reacts with: Human |
| Immunogen | Recombinant full length protein corresponding to Human IGLC2 aa 1-106. Expressed in E. coli. Sequence: GQPKANPTVTLFPPSSEELQANKATLVCLISDFYPGAVTV AWKADGSPVK AGVETTKPSKQSNNKYAASSYLSLTPEQWKSHRSYSCQV THEGSTVEKTV APTECS |

Database link: [P01842](#)

 [Run BLAST with](#)

 [Run BLAST with](#)

| | |
|-------------------------|--|
| Positive control | WB: Recombinant human IGLC2 protein (amino acids 1-106). IGLC2 (amino acids: 1-106) - hlgGfC transfected HEK-293 cell lysate. IHC-P: Human colon tissue and endometrial cancer tissue. |
|-------------------------|--|

General notes

Reproducibility is key to advancing scientific discovery and accelerating scientists' next breakthrough.

Abcam is leading the way with our range of recombinant antibodies, knockout-validated antibodies and knockout cell lines, all of which support improved reproducibility.

We are also planning to innovate the way in which we present recommended applications and species on our product datasheets, so that only applications & species that have been tested in our own labs, our suppliers or by selected trusted collaborators are covered by our Abpromise™ guarantee.

In preparation for this, we have started to update the applications & species that this product is Abpromise guaranteed for.

We are also updating the applications & species that this product has been “predicted to work with,” however this information is not covered by our Abpromise guarantee.

Applications & species from publications and Abreviews that have not been tested in our own labs or in those of our suppliers are not covered by the Abpromise guarantee.

Please check that this product meets your needs before purchasing. If you have any questions,

special requirements or concerns, please send us an inquiry and/or contact our Support team ahead of purchase. Recommended alternatives for this product can be found below, as well as customer reviews and Q&As.

Properties

| | |
|-----------------------------|---|
| Form | Liquid |
| Storage instructions | Shipped at 4°C. Store at +4°C short term (1-2 weeks). Upon delivery aliquot. Store at -20°C long term. Avoid freeze / thaw cycle. |
| Storage buffer | Preservative: 0.05% Sodium azide Constituent: PBS |
| Purity | Protein G purified |
| Purification notes | Purified from TCS. |
| Clonality | Monoclonal |
| Clone number | 5E12B9 |
| Isotype | IgG1 |

Applications

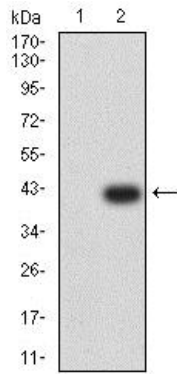
Our [Abpromise guarantee](#) covers the use of **ab233563** in the following tested applications.

The application notes include recommended starting dilutions; optimal dilutions/concentrations should be determined by the end user.

| Application | Abreviews | Notes |
|-------------|-----------|---|
| WB | | 1/500 - 1/2000. Predicted molecular weight: 11 kDa. |
| IHC-P | | 1/200 - 1/1000. |

Target

Images



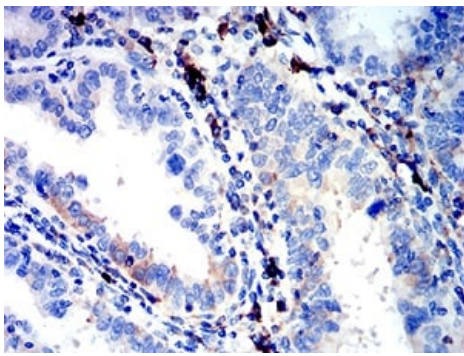
Western blot - Anti-IGLC2 antibody [5E12B9] (ab233563)

All lanes : Anti-IGLC2 antibody [5E12B9] (ab233563) at 1/500 dilution

Lane 1 : HEK-293 (Human epithelial cell line from embryonic kidney) cell lysate

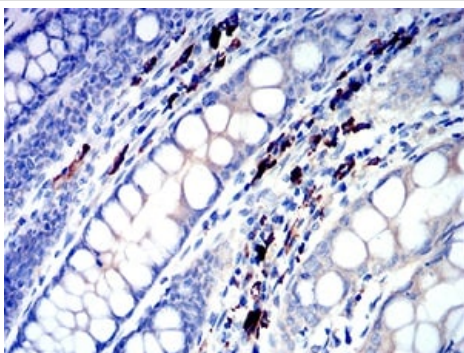
Lane 2 : IGLC2 (amino acids: 1-106) - hlgGFc transfected HEK-293 (Human epithelial cell line from embryonic kidney) cell lysate

Predicted band size: 11 kDa



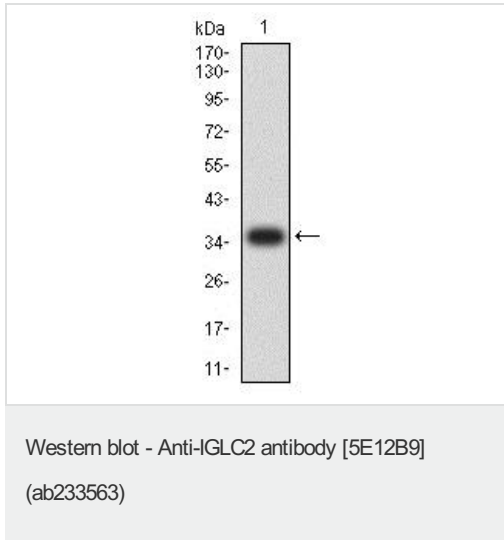
Immunohistochemistry (Formalin/PFA-fixed paraffin-embedded sections) - Anti-IGLC2 antibody [5E12B9] (ab233563)

Paraffin-embedded human endometrial cancer tissue stained for IGLC2 with ab233563 at a 1/200 dilution in immunohistochemical analysis. DAB staining.



Immunohistochemistry (Formalin/PFA-fixed paraffin-embedded sections) - Anti-IGLC2 antibody [5E12B9] (ab233563)

Paraffin-embedded human colon tissue stained for IGLC2 with ab233563 at a 1/200 dilution in immunohistochemical analysis. DAB staining.



Anti-IGLC2 antibody [5E12B9] (ab233563) at 1/500 dilution +
Recombinant human IGLC2 protein (amino acids 1-106)

Predicted band size: 11 kDa

(Expected MW is 36.8 kDa)

Please note: All products are "FOR RESEARCH USE ONLY. NOT FOR USE IN DIAGNOSTIC PROCEDURES"

Our Abpromise to you: Quality guaranteed and expert technical support

- Replacement or refund for products not performing as stated on the datasheet
- Valid for 12 months from date of delivery
- Response to your inquiry within 24 hours
- We provide support in Chinese, English, French, German, Japanese and Spanish
- Extensive multi-media technical resources to help you
- We investigate all quality concerns to ensure our products perform to the highest standards

If the product does not perform as described on this datasheet, we will offer a refund or replacement. For full details of the Abpromise, please visit <https://www.abcam.com/abpromise> or contact our technical team.

Terms and conditions

- Guarantee only valid for products bought direct from Abcam or one of our authorized distributors