

Product datasheet

Anti-IgM antibody [KT16] ab110653

[2 Images](#)

Overview

Product name	Anti-IgM antibody [KT16]
Description	Mouse monoclonal [KT16] to IgM
Host species	Mouse
Specificity	ab110653 does not cross-react with Human IgG and recombinant Human IgG1, IgG2, IgG3, IgG4, IgA and IgE.
Tested applications	Suitable for: Sandwich ELISA
Species reactivity	Reacts with: Human
Immunogen	Recombinant Human IgM
Positive control	Human serum
General notes	<p>Reproducibility is key to advancing scientific discovery and accelerating scientists' next breakthrough.</p> <p>Abcam is leading the way with our range of recombinant antibodies, knockout-validated antibodies and knockout cell lines, all of which support improved reproducibility.</p> <p>We are also planning to innovate the way in which we present recommended applications and species on our product datasheets, so that only applications & species that have been tested in our own labs, our suppliers or by selected trusted collaborators are covered by our Abpromise™ guarantee.</p> <p>In preparation for this, we have started to update the applications & species that this product is Abpromise guaranteed for.</p> <p>We are also updating the applications & species that this product has been “predicted to work with,” however this information is not covered by our Abpromise guarantee.</p> <p>Applications & species from publications and Abreviews that have not been tested in our own labs or in those of our suppliers are not covered by the Abpromise guarantee.</p> <p>Please check that this product meets your needs before purchasing. If you have any questions, special requirements or concerns, please send us an inquiry and/or contact our Support team ahead of purchase. Recommended alternatives for this product can be found below, as well as customer reviews and Q&As.</p>

Properties

Form	Liquid
-------------	--------

Storage instructions	Shipped at 4°C. Store at +4°C short term (1-2 weeks). Upon delivery aliquot. Store at -20°C or -80°C. Avoid freeze / thaw cycle.
Storage buffer	Preservative: 0.1% Sodium azide Constituent: PBS
Purity	Protein A purified
Clonality	Monoclonal
Clone number	KT16
Isotype	IgG1

Applications

Our [Abpromise guarantee](#) covers the use of **ab110653** in the following tested applications.

The application notes include recommended starting dilutions; optimal dilutions/concentrations should be determined by the end user.

Application	Abreviews	Notes
Sandwich ELISA		Use a concentration of 5 µg/ml. Can be paired for Sandwich ELISA with HRP Mouse monoclonal [KT38] to IgM (ab106742) . Use ab106742 as the detection antibody and ab110653 as the capture antibody.

Target

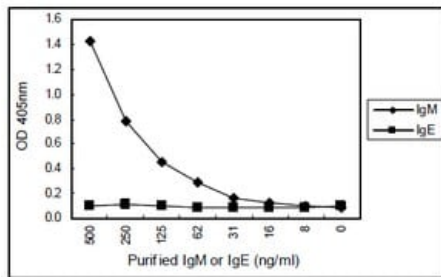
Relevance

IgM normally constitutes about 10% of serum immunoglobulins. IgM antibody is prominent in early immune responses to most antigens and predominates in certain antibody responses such as 'natural' blood group antibodies. IgM (with IgD) is the major immunoglobulin expressed on the surface of B cells. The gene for the mu constant region contains four domains separated by short intervening sequences. Class specific anti immunoglobulin antibodies are useful for: The characterization of malignant B cell proliferations. All but acute lymphocytic leukemias share either surface or intra cytoplasmic Ig with an isotypic restriction, which suggest the monoclonal nature of the cell population. Most of the chronic lymphocytic leukemias, non Hodgkin lymphomas and Burkitt's lymphoma bear surface IgM, whereas plasmocytes from Waldenström's disease bear intracytoplasmic IgM. The other isotypes are less frequently found. On the other hand multiple myelomas are usually of the IgG or IgA type. Characterization of plasma cells in inflammatory conditions: Plasma cell typing can be of use for the classification of intestinal inflammatory conditions such as inflammatory bowel disease and allergic conditions. In the latter a specific increase in the number of IgE plasma cells can be demonstrated.

Cellular localization

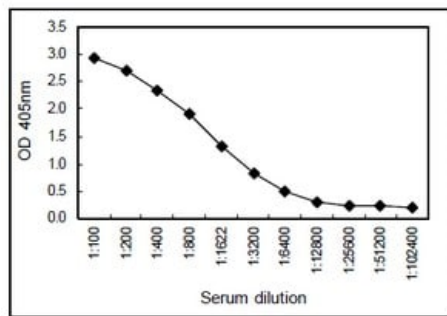
Isoform 1: Secreted. During differentiation, B lymphocytes switch from expression of membrane bound IgM to secretion of IgM. Isoform 2: Cell membrane; Single pass type I membrane protein.

Images



Sandwich ELISA - Anti-IgM antibody [KT16]
(ab110653)

Sandwich ELISA for purified IgM using ab110653 coated plate and HRP conjugated ab106742. IgE is a negative control.



Sandwich ELISA - Anti-IgM antibody [KT16]
(ab110653)

Sandwich ELISA for Human serum using ab110653 coated plate and HRP conjugated ab106742.

Please note: All products are "FOR RESEARCH USE ONLY. NOT FOR USE IN DIAGNOSTIC PROCEDURES"

Our Abpromise to you: Quality guaranteed and expert technical support

- Replacement or refund for products not performing as stated on the datasheet
- Valid for 12 months from date of delivery
- Response to your inquiry within 24 hours
- We provide support in Chinese, English, French, German, Japanese and Spanish
- Extensive multi-media technical resources to help you
- We investigate all quality concerns to ensure our products perform to the highest standards

If the product does not perform as described on this datasheet, we will offer a refund or replacement. For full details of the Abpromise, please visit <https://www.abcam.com/abpromise> or contact our technical team.

Terms and conditions

- Guarantee only valid for products bought direct from Abcam or one of our authorized distributors