


## Product datasheet

# Anti-IKK alpha + IKK beta (phospho S180 + S181) antibody ab55341

★ ★ ★ ★ ★ 1 Abreviews 6 References 3 Images

### Overview

---

<b>Product name</b>	Anti-IKK alpha + IKK beta (phospho S180 + S181) antibody
<b>Description</b>	Rabbit polyclonal to IKK alpha + IKK beta (phospho S180 + S181)
<b>Host species</b>	Rabbit
<b>Specificity</b>	This antibody detects endogenous levels of IKK alpha/beta ONLY when phosphorylated at serine 180/181.
<b>Tested applications</b>	<b>Suitable for:</b> WB, IHC-P
<b>Species reactivity</b>	<b>Reacts with:</b> Human <b>Predicted to work with:</b> Mouse, Rat 
<b>Immunogen</b>	Synthetic phosphopeptide derived from human IKK alpha/beta around the phosphorylation site of serine 180/181 (C-T-S <sup>P</sup> -F-V).
<b>Positive control</b>	WB: HepG2 cell lysate. IHC-P: Human heart tissue.

### Properties

---

<b>Form</b>	Liquid
<b>Storage instructions</b>	Shipped at 4°C. Store at -20°C. Stable for 12 months at -20°C.
<b>Storage buffer</b>	pH: 7.40 Preservative: 0.02% Sodium azide Constituents: 50% Glycerol (glycerin, glycerine), 0.87% Sodium chloride, PBS
<b>Purity</b>	Immunogen affinity purified
<b>Purification notes</b>	The antibody against non phosphopeptide was removed by chromatography using non phosphopeptide corresponding to the phosphorylation site.
<b>Clonality</b>	Polyclonal
<b>Isotype</b>	IgG

### Applications

---

Our [Abpromise guarantee](#) covers the use of **ab55341** in the following tested applications.

The application notes include recommended starting dilutions; optimal dilutions/concentrations should be determined by the end user.

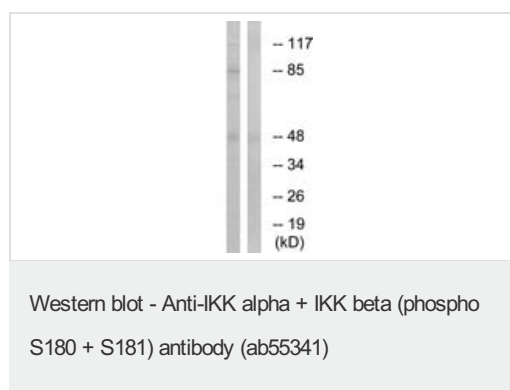
Application	Abreviews	Notes
WB	★★★★☆	1/500 - 1/1000.
IHC-P		1/50 - 1/100.

## Target

**Relevance** IKK is a serine protein kinase, and the IKK complex contains alpha and beta subunits (IKK alpha and IKK beta). IKK alpha and IKK beta interact with each other and both are essential for NFkB activation.

**Cellular localization** Cytoplasmic and Nuclear; Membrane raft. Note: IKK beta is colocalized with DPP4 in membrane rafts.

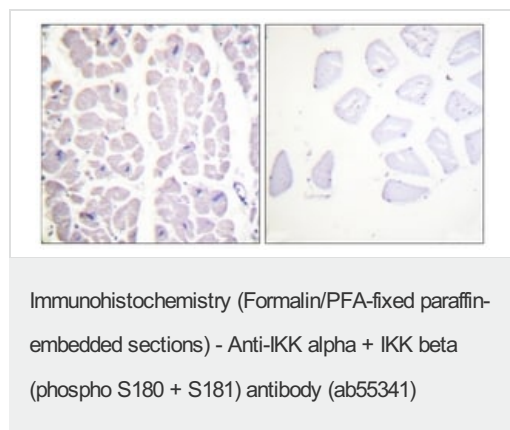
## Images



**All lanes** : Anti-IKK alpha + IKK beta (phospho S180 + S181) antibody (ab55341)

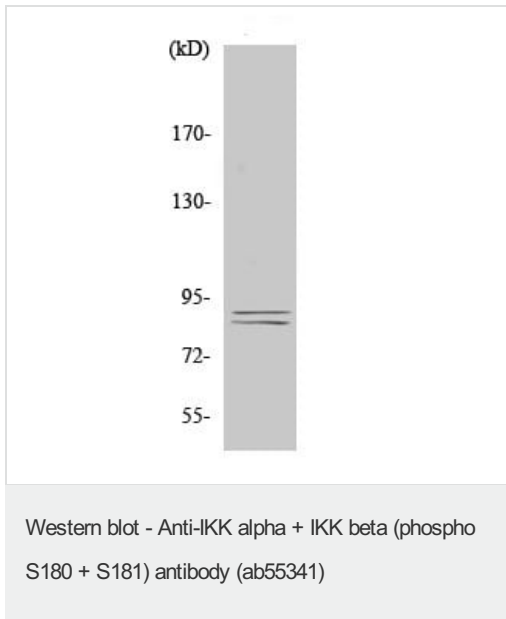
**Lane 1** : HepG2 cells treated with TNF (20 ng/ml, 5 mins)

**Lane 2** : HepG2 cells treated with TNF (20 ng/ml, 5 mins) with synthesized peptide



ab55341 at 1/100 staining human heart (paraffin-embedded) using IHC. Image on right is treated with the synthesized phosphopeptide and the image on the left is untreated.

Immunohistochemistry (Formalin/PFA-fixed paraffin-embedded sections) - Anti-IKK alpha + IKK beta (phospho S180 + S181) antibody (ab55341)



Anti-IKK alpha + IKK beta (phospho S180 + S181) antibody (ab55341) at 1/1000 dilution (Anti-IKK alpha + IKK beta (phospho S180 + S181) antibody) + HepG2 cell lysate

**Please note:** All products are "FOR RESEARCH USE ONLY. NOT FOR USE IN DIAGNOSTIC PROCEDURES"

### Our Abpromise to you: Quality guaranteed and expert technical support

---

- Replacement or refund for products not performing as stated on the datasheet
- Valid for 12 months from date of delivery
- Response to your inquiry within 24 hours
- We provide support in Chinese, English, French, German, Japanese and Spanish
- Extensive multi-media technical resources to help you
- We investigate all quality concerns to ensure our products perform to the highest standards

If the product does not perform as described on this datasheet, we will offer a refund or replacement. For full details of the Abpromise, please visit <https://www.abcam.com/abpromise> or contact our technical team.

### Terms and conditions

---

- Guarantee only valid for products bought direct from Abcam or one of our authorized distributors