

Product datasheet

Anti-IL-10 antibody ab34843

★★★★★ 15 Abreviews 71 References 2 Images

Overview

Product name	Anti-IL-10 antibody
Description	Rabbit polyclonal to IL-10
Host species	Rabbit
Tested applications	Suitable for: RIA, IHC-Fr, Neutralising, WB, IHC-P, ICC/IF, ELISA
Species reactivity	Reacts with: Human, Recombinant fragment
Immunogen	Full length native protein (purified) corresponding to Human IL-10.
General notes	<p>The Life Science industry has been in the grips of a reproducibility crisis for a number of years. Abcam is leading the way in addressing this with our range of recombinant monoclonal antibodies and knockout edited cell lines for gold-standard validation. Please check that this product meets your needs before purchasing.</p> <p>If you have any questions, special requirements or concerns, please send us an inquiry and/or contact our Support team ahead of purchase. Recommended alternatives for this product can be found below, along with publications, customer reviews and Q&As</p>

Properties

Form	Liquid
Storage instructions	Shipped at 4°C. Upon delivery aliquot and store at -20°C or -80°C. Avoid repeated freeze / thaw cycles.
Storage buffer	Preservative: 0.01% Sodium azide Constituent: Whole serum
Purity	Whole antiserum
Clonality	Polyclonal
Isotype	IgG

Applications

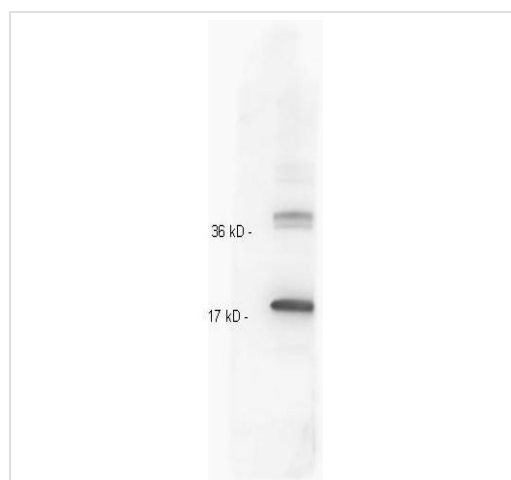
The Abpromise guarantee Our [Abpromise guarantee](#) covers the use of ab34843 in the following tested applications. The application notes include recommended starting dilutions; optimal dilutions/concentrations should be determined by the end user.

Application	Abreviews	Notes
RIA		Use at an assay dependent concentration.
IHC-Fr	★★★★★ (2)	Use at an assay dependent concentration.
Neutralising		Use at an assay dependent concentration.
WB	★★★★★ (2)	1/2000 - 1/10000. Predicted molecular weight: 21 kDa. In Western blot analysis of natural cell products or human body fluids, multiple bands of IL-10 will appear due to the variable amount of glycosylation on the molecule.
IHC-P	★★★★★ (8)	Use at an assay dependent concentration.
ICC/IF	★★★★★ (3)	Use at an assay dependent concentration.
ELISA		Use at an assay dependent concentration. (as detection antibody, using a monoclonal antibody for capture).

Target

Function	Inhibits the synthesis of a number of cytokines, including IFN-gamma, IL-2, IL-3, TNF and GM-CSF produced by activated macrophages and by helper T-cells.
Tissue specificity	Produced by a variety of cell lines, including T-cells, macrophages, mast cells and other cell types.
Sequence similarities	Belongs to the IL-10 family.
Cellular localization	Secreted.

Images



Western blot - Anti-IL-10 antibody (ab34843)

Anti-IL-10 antibody (ab34843) at 1/200 dilution + recombinant IL-10 protein

Secondary

Goat anti-rabbit at 1/20000 dilution

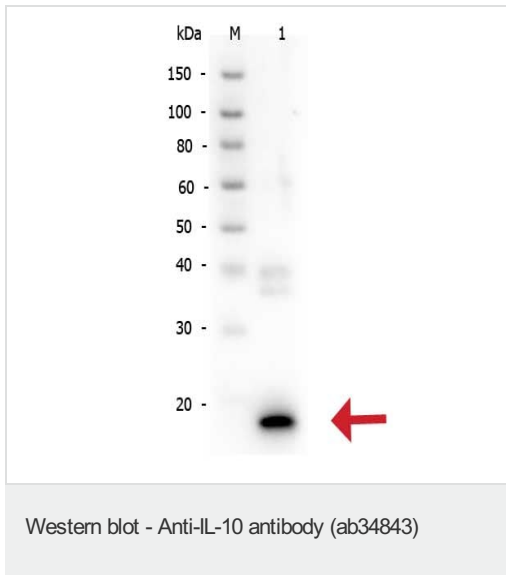
Predicted band size: 21 kDa

4-20% reducing gel.

Membrane was blocked in 3% BSA-TBS for 1 hour 4°C.

Dilution buffer: 3% BSA-TBS.

Incubated O/N at 4°C.



Anti-IL-10 antibody (ab34843) at 1/500 dilution + recombinant IL-10 protein, 50ng

Secondary

Peroxidase conjugated secondary at 1/40000 dilution

Predicted band size: 21 kDa

Please note: All products are "FOR RESEARCH USE ONLY. NOT FOR USE IN DIAGNOSTIC PROCEDURES"

Our Abpromise to you: Quality guaranteed and expert technical support

- Replacement or refund for products not performing as stated on the datasheet
- Valid for 12 months from date of delivery
- Response to your inquiry within 24 hours

- We provide support in Chinese, English, French, German, Japanese and Spanish
- Extensive multi-media technical resources to help you
- We investigate all quality concerns to ensure our products perform to the highest standards

If the product does not perform as described on this datasheet, we will offer a refund or replacement. For full details of the Abpromise, please visit <https://www.abcam.com/abpromise> or contact our technical team.

Terms and conditions

- Guarantee only valid for products bought direct from Abcam or one of our authorized distributors