

## Product datasheet

# Anti-IL-12RB2 antibody ab203209

3 Images

### Overview

<b>Product name</b>	Anti-IL-12RB2 antibody
<b>Description</b>	Rabbit polyclonal to IL-12RB2
<b>Host species</b>	Rabbit
<b>Tested applications</b>	<b>Suitable for:</b> IHC-P
<b>Species reactivity</b>	<b>Reacts with:</b> Mouse, Rat, Human
<b>Immunogen</b>	Synthetic peptide within Human IL-12RB2 aa 335-385 conjugated to keyhole limpet haemocyanin. The exact sequence is proprietary. Sequence: DYSRQQ ISLFWKNLSV SEARGKILHY QVTLQELTGG KAMTQNITGH TSWTT  Database link: <a href="#">Q99665</a>

 [Run BLAST with](#)

 [Run BLAST with](#)

**Positive control** Human bladder carcinoma, mouse brain and rat lung tissues.

**General notes**

Reproducibility is key to advancing scientific discovery and accelerating scientists' next breakthrough.

Abcam is leading the way with our range of recombinant antibodies, knockout-validated antibodies and knockout cell lines, all of which support improved reproducibility.

We are also planning to innovate the way in which we present recommended applications and species on our product datasheets, so that only applications & species that have been tested in our own labs, our suppliers or by selected trusted collaborators are covered by our Abpromise™ guarantee.

In preparation for this, we have started to update the applications & species that this product is Abpromise guaranteed for.

We are also updating the applications & species that this product has been “predicted to work with,” however this information is not covered by our Abpromise guarantee.

Applications & species from publications and Abreviews that have not been tested in our own labs or in those of our suppliers are not covered by the Abpromise guarantee.

Please check that this product meets your needs before purchasing. If you have any questions, special requirements or concerns, please send us an inquiry and/or contact our Support team ahead of purchase. Recommended alternatives for this product can be found below, as well as customer reviews and Q&As.

## Properties

---

<b>Form</b>	Liquid
<b>Storage instructions</b>	Shipped at 4°C. Store at +4°C short term (1-2 weeks). Upon delivery aliquot. Store at -20°C long term. Avoid freeze / thaw cycle.
<b>Storage buffer</b>	Preservative: 0.09% Sodium azide Constituents: 50% Glycerol, 1% BSA
<b>Purity</b>	Protein A purified
<b>Clonality</b>	Polyclonal
<b>Isotype</b>	IgG

## Applications

---

Our [Abpromise guarantee](#) covers the use of **ab203209** in the following tested applications.

The application notes include recommended starting dilutions; optimal dilutions/concentrations should be determined by the end user.

Application	Abreviews	Notes
IHC-P		1/100 - 1/500.

---

## Target

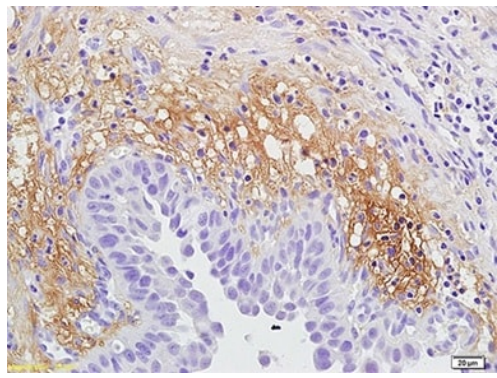
---

<b>Function</b>	Receptor for interleukin-12. This subunit is the signaling component coupling to the JAK2/STAT4 pathway. Promotes the proliferation of T-cells as well as NK cells. Induces the promotion of T-cells towards the Th1 phenotype by strongly enhancing IFN-gamma production.
<b>Tissue specificity</b>	Isoform 2 is expressed at similar levels in both naive and activated T-cells.
<b>Sequence similarities</b>	Belongs to the type I cytokine receptor family. Type 2 subfamily. Contains 5 fibronectin type-III domains.
<b>Developmental stage</b>	Maximum levels in Th1 cells between day 3 and day 8 of activation.
<b>Domain</b>	The WSXWS motif appears to be necessary for proper protein folding and thereby efficient intracellular transport and cell-surface receptor binding. The box 1 motif is required for JAK interaction and/or activation.
<b>Post-translational modifications</b>	On IL12 binding, phosphorylated on C-terminal tyrosine residues by JAK2. Phosphorylation on Tyr-800 is required for STAT4 binding and activation, and for SOCS3 binding.
<b>Cellular localization</b>	Membrane.

---

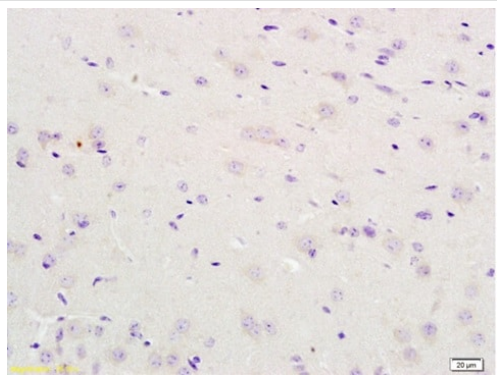
## Images

---



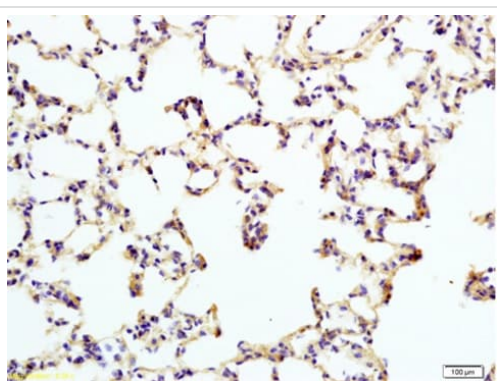
Immunohistochemistry (Formalin/PFA-fixed paraffin-embedded sections) - Anti-IL-12RB2 antibody (ab203209)

Immunohistochemical analysis of formalin-fixed, paraffin embedded Human bladder carcinoma tissue labeling IL-12RB2 with ab203209 at 1/200 dilution, followed by conjugation to the secondary antibody and DAB staining.



Immunohistochemistry (Formalin/PFA-fixed paraffin-embedded sections) - Anti-IL-12RB2 antibody (ab203209)

Immunohistochemical analysis of formalin-fixed, paraffin embedded mouse brain tissue labeling IL-12RB2 with ab203209 at 1/200 dilution, followed by conjugation to the secondary antibody and DAB staining.



Immunohistochemistry (Formalin/PFA-fixed paraffin-embedded sections) - Anti-IL-12RB2 antibody (ab203209)

Immunohistochemical analysis of formalin-fixed, paraffin embedded rat lung tissue labeling IL-12RB2 with ab203209 at 1/200 dilution, followed by conjugation to the secondary antibody and DAB staining.

**Please note:** All products are "FOR RESEARCH USE ONLY. NOT FOR USE IN DIAGNOSTIC PROCEDURES"

### **Our Abpromise to you: Quality guaranteed and expert technical support**

---

- Replacement or refund for products not performing as stated on the datasheet
- Valid for 12 months from date of delivery
- Response to your inquiry within 24 hours
  
- We provide support in Chinese, English, French, German, Japanese and Spanish
- Extensive multi-media technical resources to help you
- We investigate all quality concerns to ensure our products perform to the highest standards

If the product does not perform as described on this datasheet, we will offer a refund or replacement. For full details of the Abpromise, please visit <https://www.abcam.com/abpromise> or contact our technical team.

### **Terms and conditions**

---

- Guarantee only valid for products bought direct from Abcam or one of our authorized distributors